



# T8

## 12.5T8/COR/48-850/FF18/G 25/1

FlexFit (Hybrid / dual-mode) T8 LED Lamps by Philips. These lamps work as either a plug-and-play (UL Type A) or ballast bypass (UL Type B) lamp. As a Type A lamp, it is compatible with a variety of ballasts. If a ballast is not desired or fails in the field, the lamp can quickly be installed as a double-ended ballast bypass lamp.

### Product data

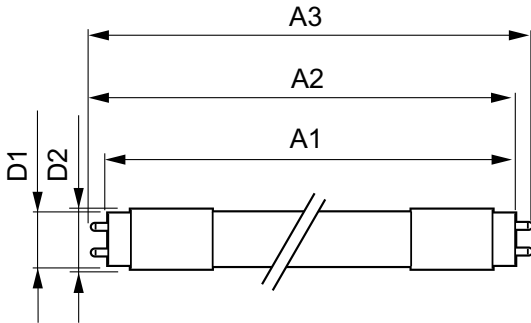
General Information		Starting Time (Nom)	
Base	G13 [ Medium Bi-Pin Fluorescent]		0.5 s
EU RoHS compliant	Yes	Warm Up Time to 60% Light (Nom)	0.5 s
Nominal Lifetime (Nom)	50000 h	Power Factor (Nom)	0.9
Switching Cycle	50000X	Voltage (Nom)	120-277 V
Technical Type	12.5;13-32W	<b>Temperature</b>	
<b>Light Technical</b>		T-Ambient (Max)	45 °C
Color Code	850 [ CCT of 5000K]	T-Ambient (Min)	-20 °C
Beam Angle (Nom)	240 °	T-Storage (Max)	65 °C
Initial lumen (Nom)	1800 lm	T-Storage (Min)	-40 °C
Color Designation	Daylight	T-Case Maximum (Nom)	60 °C
Correlated Color Temperature (Nom)	5000 K	<b>Controls and Dimming</b>	
Luminous Efficacy (rated) (Nom)	144.00 lm/W	Dimmable	No
Color Consistency	<5	<b>Mechanical and Housing</b>	
Color Rendering Index (Nom)	82	Bulb Finish	Frosted
LLMF At End Of Nominal Lifetime (Nom)	70 %	Bulb Material	Glass
<b>Operating and Electrical</b>		Product Length	48 in
Input Frequency	50 to 60 Hz	<b>Approval and Application</b>	
Power (Rated) (Nom)	12.5 13 W	Energy Saving Product	Yes
Lamp Current (Max)	110 mA		
Lamp Current (Min)	45 mA		

# T8

<b>Approbation Marks</b>	RoHS compliance UL certificate DLC compliance
<b>Product Data</b>	
Order product name	12.5T8/COR/48-850/FF18/G 25/1
EAN/UPC - Product	046677600198
Order code	600197

<b>Numerator - Quantity Per Pack</b>	1
<b>Numerator - Packs per outer box</b>	25
<b>Material Nr. (12NC)</b>	929002317404
<b>Net Weight (Piece)</b>	0.180 kg
<b>Model Number</b>	9290023174

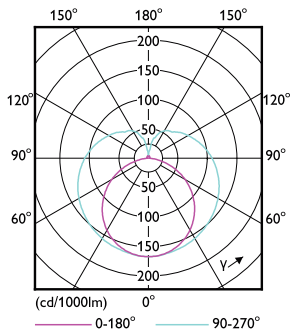
## Dimensional drawing



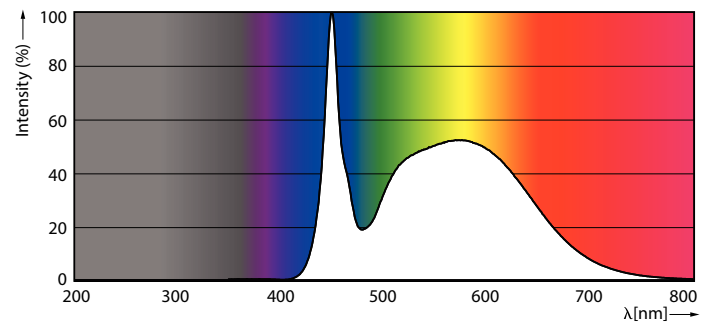
Type A+B corepro 1800lm 14W 5000k DLC

Product	D1	D2	A1	A2	A3
12.5T8/COR/48-850/FF18/G 25/1	25.7 mm	28 mm	1198.2 mm	1205.3 mm	1212.4 mm

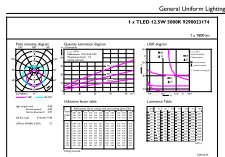
## Photometric data



LEDtube COR 12,5W G13

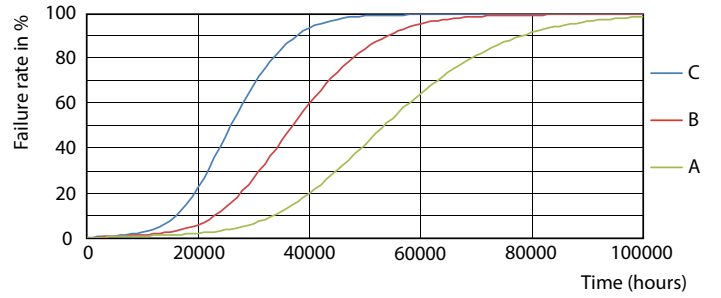
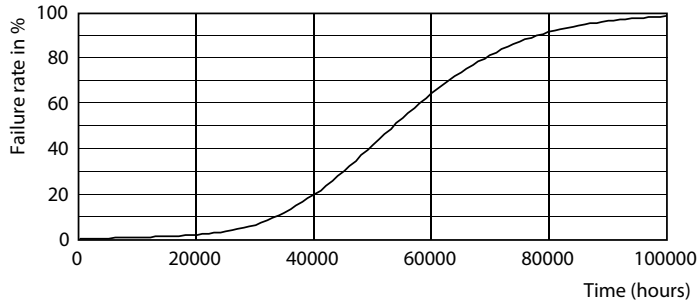


LEDtube COR 12,5W G13 1800lm 850



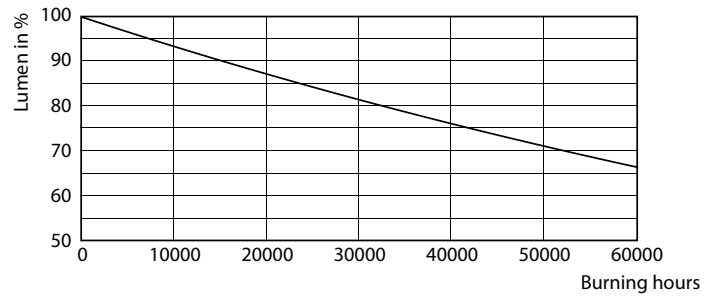
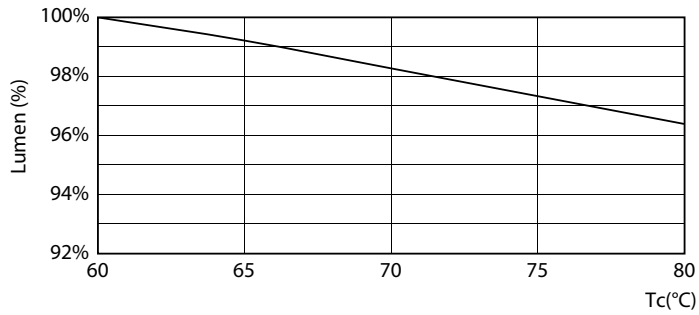
LEDtube COR 12,5W G13 1800lm 850

Lifetime



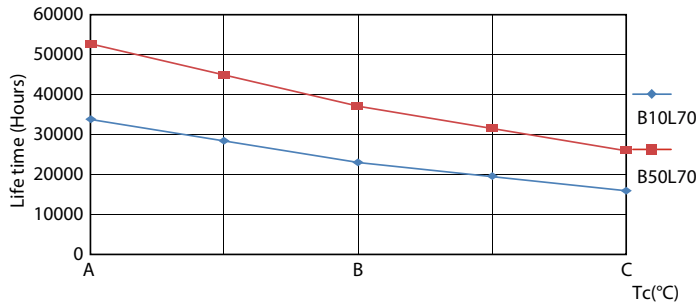
LEDtube 50K-LED

LEDtube 50K FailureRate-LED



LEDtube 12,5W 50K 1 LumenVsTc

LEDtube 50K-LMP



LEDtube 50K LifetimeVsTc-LED

