



T8

7T8/MAS/24-850/IF11/P/DIM 10/1

Our TLEDs are available in InstantFit (Type A / Type C) or MainsFit (Ballast bypass / Type B) versions. The InstantFit lamps work on a broad variety of ballasts and LED drivers. Only InstantFit has over 15,000 lamp & ballast combinations delivering even light output, energy savings and a long lifetime. Our MainsFit products feature a double-ended design, simplifying installation while a proprietary safety circuit minimizes a shock risk. Lamp sizes range from 2-foot to 8-foot and U-bend with a variety of lumen outputs.

Product data

General Information		Lamp Current (Max)	
Base	G13 [Medium Bi-Pin Fluorescent]	Lamp Current (Max)	240 mA
EU RoHS compliant	Yes	Lamp Current (Min)	80 mA
Nominal Lifetime (Nom)	70000 h	Starting Time (Nom)	0.5 s
Switching Cycle	50000X	Warm Up Time to 60% Light (Nom)	0.5 s
Light Technical		UL Type	Type A - works on ballast
Color Code	850 [CCT of 5000K]	Power Factor (Nom)	0.9
Beam Angle (Nom)	180 °	Voltage (Nom)	120-277, 347 V
Initial lumen (Nom)	1200 lm	Temperature	
Color Designation	Daylight	T-Ambient (Max)	45 °C
Correlated Color Temperature (Nom)	5000 K	T-Ambient (Min)	-20 °C
Luminous Efficacy (rated) (Nom)	164.00 lm/W	T-Storage (Max)	65 °C
Color Consistency	<5	T-Storage (Min)	-40 °C
Color Rendering Index (Nom)	80	T-Case Maximum (Nom)	50 °C
LLMF At End Of Nominal Lifetime (Nom)	70 %	Controls and Dimming	
Operating and Electrical		Dimmable	Yes
Input Frequency	20K to 120K Hz	Mechanical and Housing	
Power (Rated) (Nom)	7 W	Bulb Material	Plastic

T8

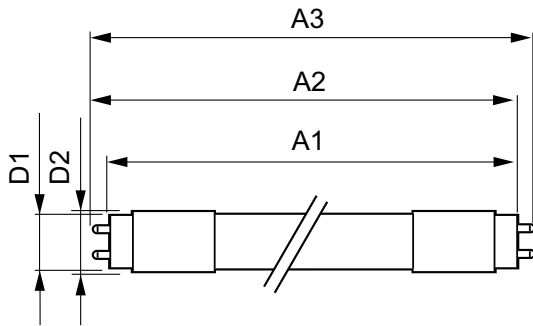
Product Length	24 in
Approval and Application	
Energy Efficiency Label (EEL)	Not applicable
Energy Saving Product	Yes
Approbation Marks	DLC compliance
Approbation Marks	RoHS compliance UL certificate
Energy Consumption kWh/1000 h	- kWh
Energy Certifications	DLC Standard

Product Data

Order product name	7T8/MAS/24-850/IF11/P/DIM 10/1
--------------------	--------------------------------

EAN/UPC - Product	046677541842
Order code	541847
Numerator - Quantity Per Pack	1
Numerator - Packs per outer box	10
Material Nr. (12NC)	929001987204
Net Weight (Piece)	0.080 kg
Model Number	9290019872

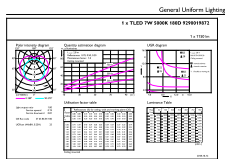
Dimensional drawing



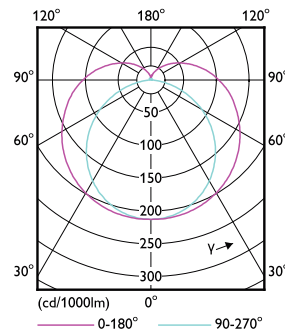
TLED IF MasterClass 2ft 1100lm 5000K

Product	D1	D2	A1	A2	A3
7T8/MAS/24-850/ IF11/P/DIM 10/1	25.7 mm	26.3 mm	588.6 mm	595.7 mm	602.8 mm

Photometric data

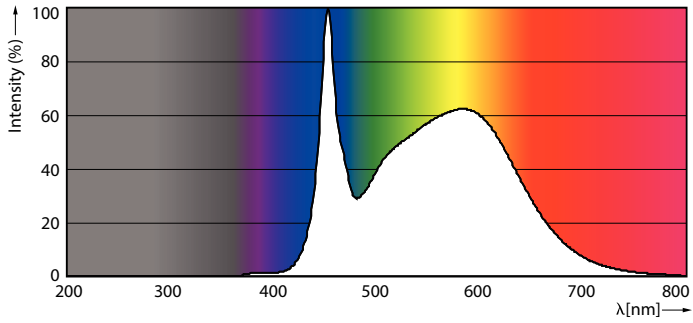


G13 5000K 1150lm



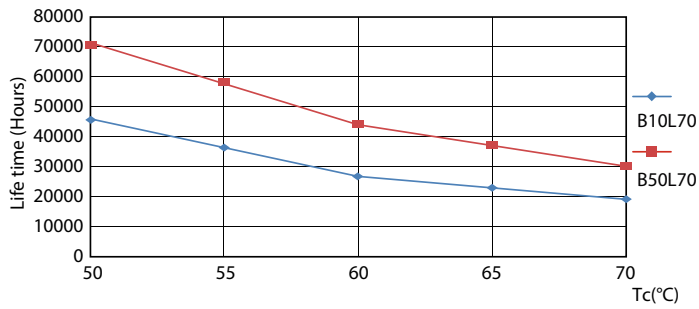
G13 4000K

Photometric data

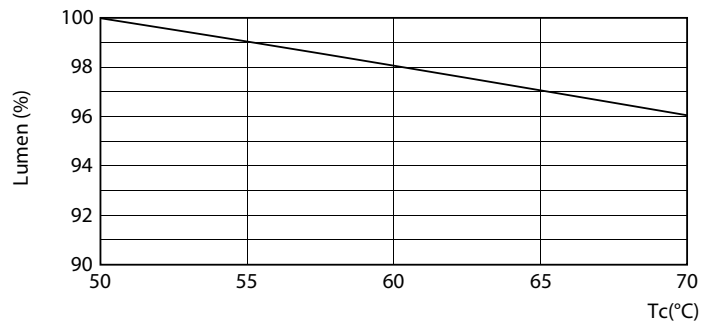


G13 5000K 1150lm

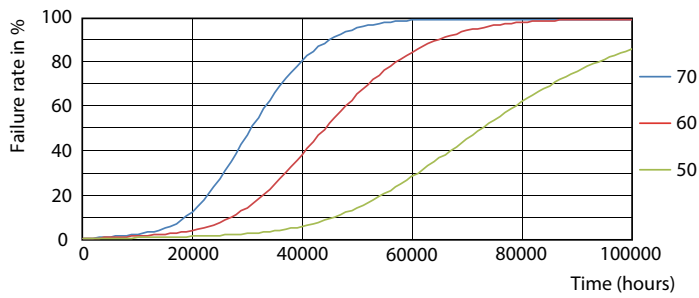
Lifetime



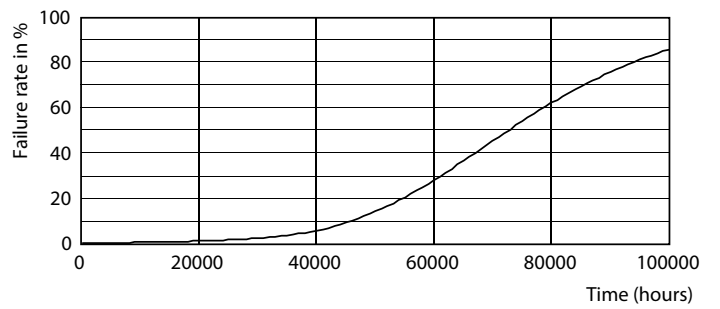
G13 4000K



G13 4000K

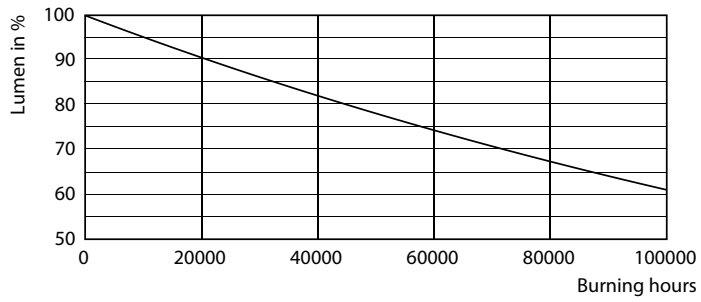


G13 4000K



G13 4000K

Lifetime



G13 4000K

