



T8

15.5T8-6U/COR/24-850/MF21/G 10/1

Philips MainsFit (UL Type B) CorePro T8 LED tubes deliver high-quality, flicker free performance at an affordable price. The UL Type B LED tubes are designed with easy installation and long-term maintenance simplicity in mind. Upgrade your lighting to Philips and realize 50,000 hour LED lifetime backed by a 5-year, full replacement limited warranty.

Product data

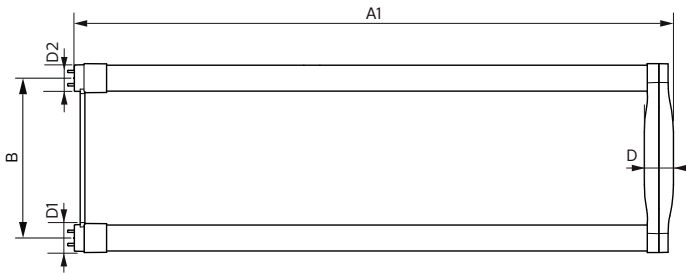
General Information		Starting Time (Nom)	
Base	2G13 [2G13]		0.9 s
EU RoHS compliant	Yes	Warm Up Time to 60% Light (Nom)	0.9 s
Nominal Lifetime (Nom)	50000 h	UL Type	Type B - bypass the ballast
Switching Cycle	50000X	Power Factor (Nom)	0.9
		Voltage (Nom)	120-277 V
Light Technical		Temperature	
Color Code	850 [CCT of 5000K]	T-Ambient (Max)	45 °C
Beam Angle (Nom)	180 °	T-Ambient (Min)	-20 °C
Initial lumen (Nom)	2100 lm	T-Storage (Max)	65 °C
Color Designation	Daylight	T-Storage (Min)	-40 °C
Correlated Color Temperature (Nom)	5000 K	T-Case Maximum (Nom)	51 °C
Luminous Efficacy (rated) (Nom)	135.00 lm/W		
Color Consistency	<5	Controls and Dimming	
Color Rendering Index (Nom)	82	Dimmable	No
LLMF At End Of Nominal Lifetime (Nom)	70 %		
Operating and Electrical		Mechanical and Housing	
Input Frequency	50 to 60 Hz	Product Length	24 in
Power (Rated) (Nom)	15.5 W		
Lamp Current (Max)	140 mA	Approval and Application	
Lamp Current (Min)	63 mA	Energy Efficiency Label (EEL)	Not applicable
		Energy Saving Product	Yes

T8

Approval Marks	UL certificate RoHS compliance DLC compliance
Energy Consumption kWh/1000 h	- kWh
Energy Certifications	DLC Standard
Product Data	
Order product name	15.5T8-6U/COR/24-850/MF21/G 10/1
EAN/UPC - Product	046677535568

Order code	535567
Numerator - Quantity Per Pack	1
Numerator - Packs per outer box	10
Material Nr. (12NC)	929001934904
Net Weight (Piece)	0.230 kg
Model Number	9290019349

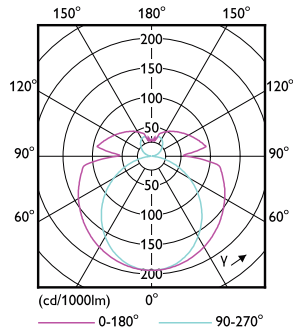
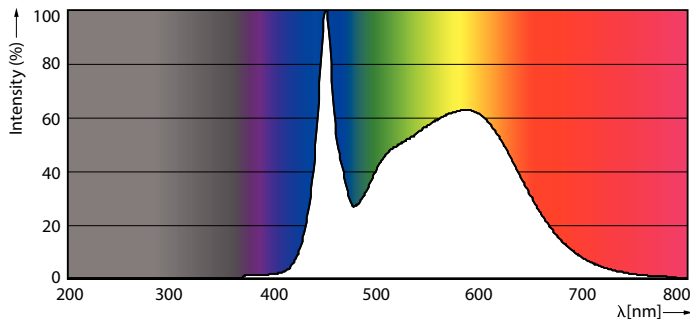
Dimensional drawing



Product	D1	D2	B	A1	D
15.5T8-6U/COR/24-850/MF21/G 10/1	25.7 mm	28.1 mm	152 mm	570 mm	27.9 mm

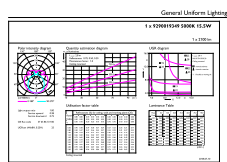
TLED MF CorePro U bent 2100lm 5000K

Photometric data



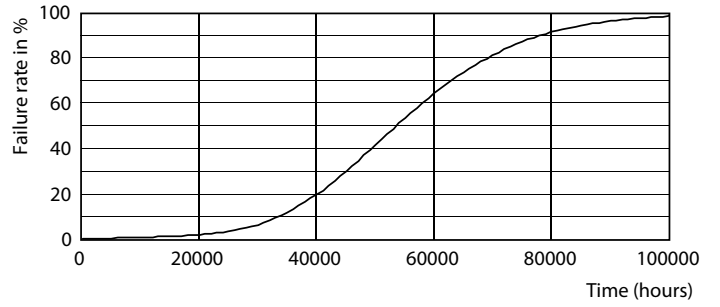
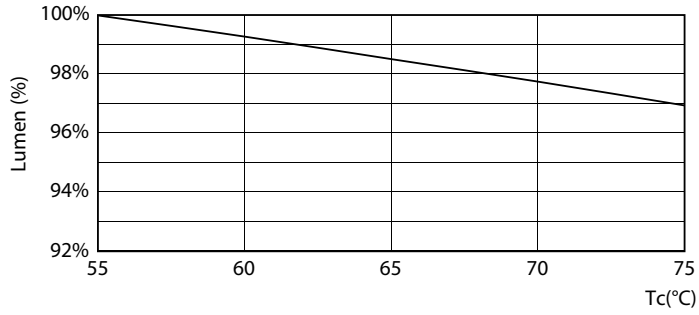
15-5W 2G13

15-5W 2G13 830 3000K



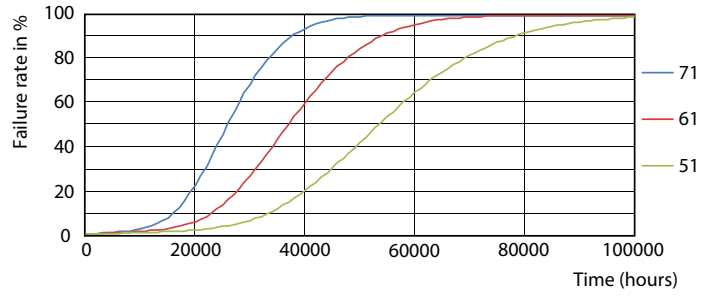
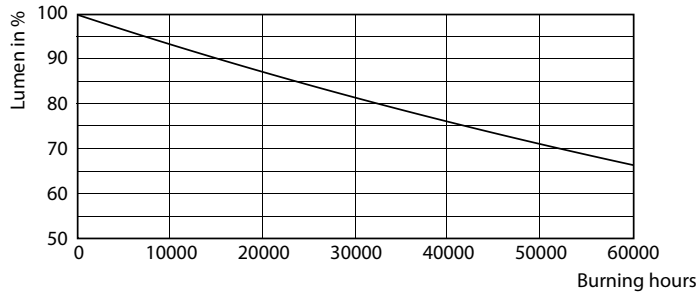
15-5W 2G13 850 5000K

Lifetime



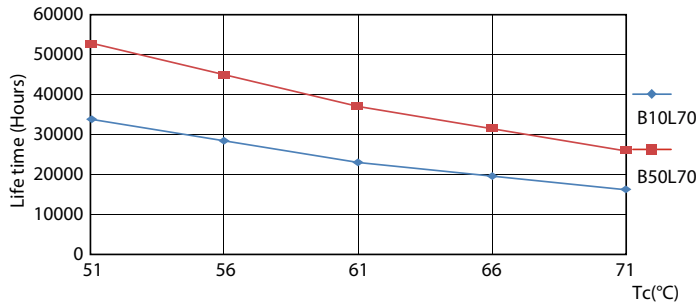
15-5W 2G13

8.5W G13



8.5W G13

15-5W 2G13



15-5W 2G13

