



PL-C/T

5.5PL-C/LED/13V/827/IF5/P/4P 20/1

Philips PLED 4-pin & 2-pin lamps are an affordable LED solution to replace compact fluorescent lamps. The product provides a natural lighting effect for use in many lighting applications, and provides instant energy savings, making them an environmentally-friendly solution. Available as replacements for 13W, 26W and 32W compact fluorescent lamps.

Product data

General Information	
Base	G24Q [G24q]
EU RoHS compliant	Yes
Nominal Lifetime (Nom)	50000 h
Switching Cycle	50000X
Light Technical	
Color Code	827 [CCT of 2700K]
Beam Angle (Nom)	150 °
Initial lumen (Nom)	520 lm
Color Designation	Warm White (WW)
Correlated Color Temperature (Nom)	2700 K
Luminous Efficacy (rated) (Nom)	94.00 lm/W
Color Consistency	<6
Color Rendering Index (Nom)	82
LLMF At End Of Nominal Lifetime (Nom)	70 %
Operating and Electrical	
Input Frequency	25000-100000 Hz
Power (Rated) (Nom)	5.5 W
Lamp Current (Max)	280 mA
Lamp Current (Min)	130 mA

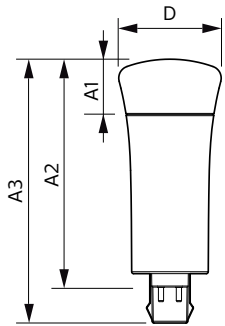
Starting Time (Nom)	0.5 s
Warm Up Time to 60% Light (Nom)	0.5 s
UL Type	Type A - works on ballast
Power Factor (Nom)	0.9
Voltage (Nom)	14-60 V
Temperature	
T-Ambient (Max)	45 °C
T-Ambient (Min)	-20 °C
T-Storage (Max)	65 °C
T-Storage (Min)	-40 °C
T-Case Maximum (Nom)	70 °C
Controls and Dimming	
Dimmable	Yes
Mechanical and Housing	
Bulb Material	Plastic
Product Length	4 in
Approval and Application	
Energy Efficiency Label (EEL)	Not applicable

PL-C/T

Energy Saving Product	Yes
Approbation Marks	RoHS compliance UL certificate
Energy Consumption kWh/1000 h	- kWh
Product Data	
Order product name	5.5PL-C/LED/13V/827/IF5/P/4P 20/1
EAN/UPC - Product	046677532437
Order code	532432

Numerator - Quantity Per Pack	1
Numerator - Packs per outer box	20
Material Nr. (12NC)	929001885704
Net Weight (Piece)	0.058 kg
Model Number	9290018857

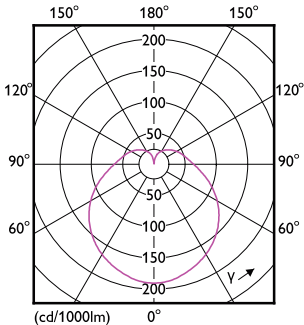
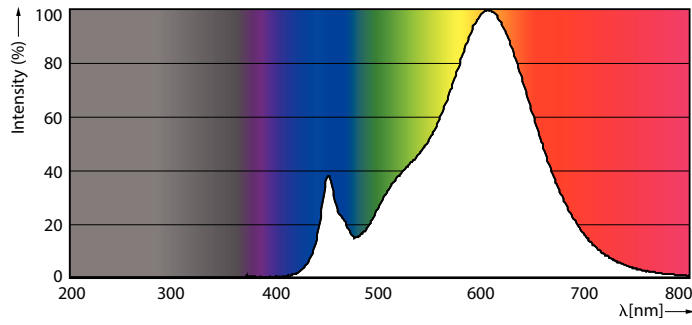
Dimensional drawing



Product	D	A1	A2	A3
5.5PL-C/LED/13V/827/IF5/P/4P 20/1	45.7 mm	24.6 mm	101.6 mm	117.6 mm

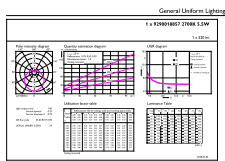
PLED PLC-V 5-13W 550lm 2700K G24q

Photometric data



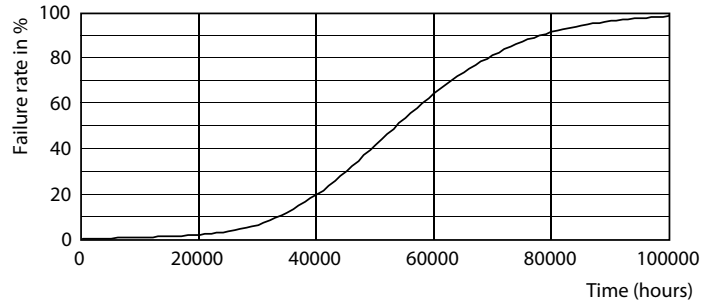
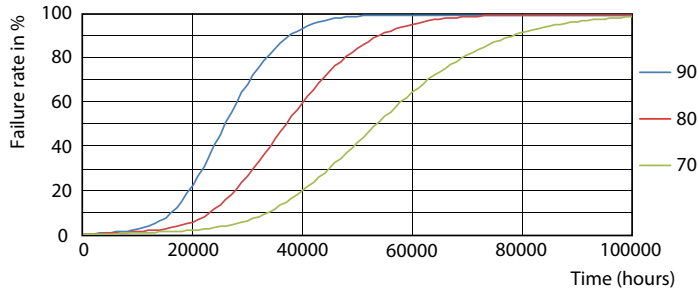
LEDtube PLC 13V 5.5W G24Q 827 15D ND

LEDtube PLC 13V 5W GX23-2 827 15D ND



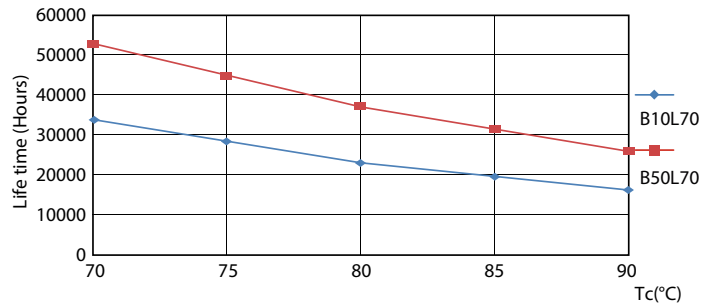
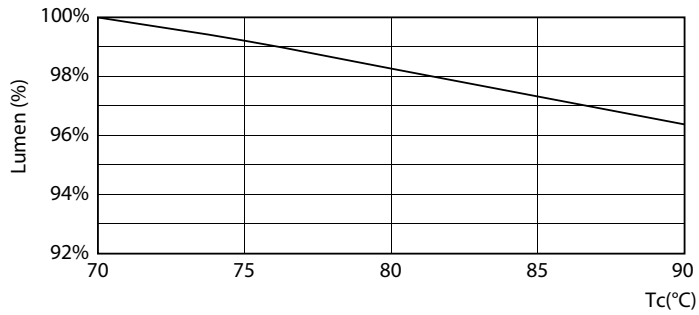
LEDtube PLC 13V 5.5W G24Q 827 15D ND

Lifetime



LEDtube PLC 13H 5W GX23-2 827 15D ND

LEDtube PLC 13H 5W GX23-2 827 15D ND



LEDtube PLC 13V 5.5W G24Q 827 15D ND

LEDtube PLC 13H 5W GX23-2 827 15D ND



LEDtube PLC 13H 5W GX23-2 827 15D ND

