



Double Ended Linear

Double Ended Linear BC250T3Q/CL 120V 12/1PK

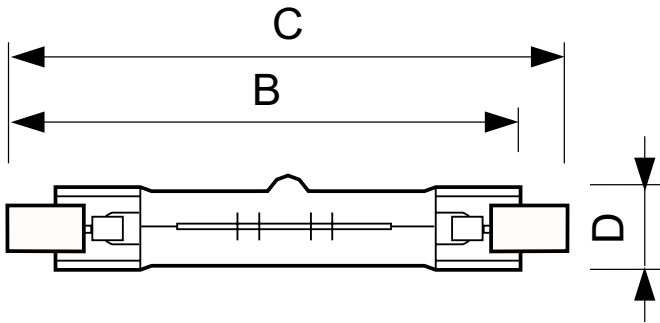
High-quality white light with superior lumen performance Halogen Double Ended lamps provide bright, white light for work lights and security lighting. Rugged construction for busy work sites. Offered in several lengths to meet most application needs. High lumen output provides light where you need it.

Product data

General Information		Cap-Base Information	
Base	R7S [R7s]	na [-]	
Nominal Lifetime (Nom)	2000 h		
Light Technical		Approval and Application	
Initial lumen (Nom)	4000 lm	Energy Efficiency Label (EEL)	E
Correlated Color Temperature (Nom)	2900 K		
Luminous Efficacy (rated) (Nom)	16 lm/W	Luminaire Design Requirements	
Color Rendering Index (Nom)	100	Bulb Temperature (Max)	900 °C
		Pinch Temperature (Max)	350 °C
Operating and Electrical		Product Data	
Power (Rated) (Nom)	250 W	Order product name	Double Ended Linear BC250T3Q/CL 120V 12/1PK
Lamp Current (Nom)	2.08 A	EAN/UPC - Product	046677415624
Starting Time (Nom)	0.0 s	Order code	415620
Voltage (Nom)	120 V	Numerator - Quantity Per Pack	1
		Numerator - Packs per outer box	12
		Material Nr. (12NC)	924884736301
		Net Weight (Piece)	0.006 kg
Controls and Dimming			
Dimmable	Yes		
Mechanical and Housing			
Bulb Finish	Clear		

Double Ended Linear

Dimensional drawing



Product	D (max)	B (max)	B	B (min)	C (max)
Double Ended Linear	12 mm	76.5 mm	74.9 mm	73.3 mm	78.3 mm
BC250T3Q/CL 120V 12/1PK					

DEComp 250W R7s 120V T3 CL

