



Double Ended Linear

Double Ended Linear

High-quality white light with superior lumen performance Halogen Double Ended lamps provide bright, white light for work lights and security lighting. Rugged construction for busy work sites. Offered in several lengths to meet most application needs. High lumen output provides light where you need it.

Benefits

- Provides high lumen output.
- Available in several lengths to meet specific applications.

Features

- Bright, white light.
- Available in wide range of wattages.
- Recessed Single Contact (RSC).
- Available in 100, 150, 250, 300, and 500 watts.

Application

- Ideal for work lights, torchieres, sconces, outdoor security fixtures.

Versions

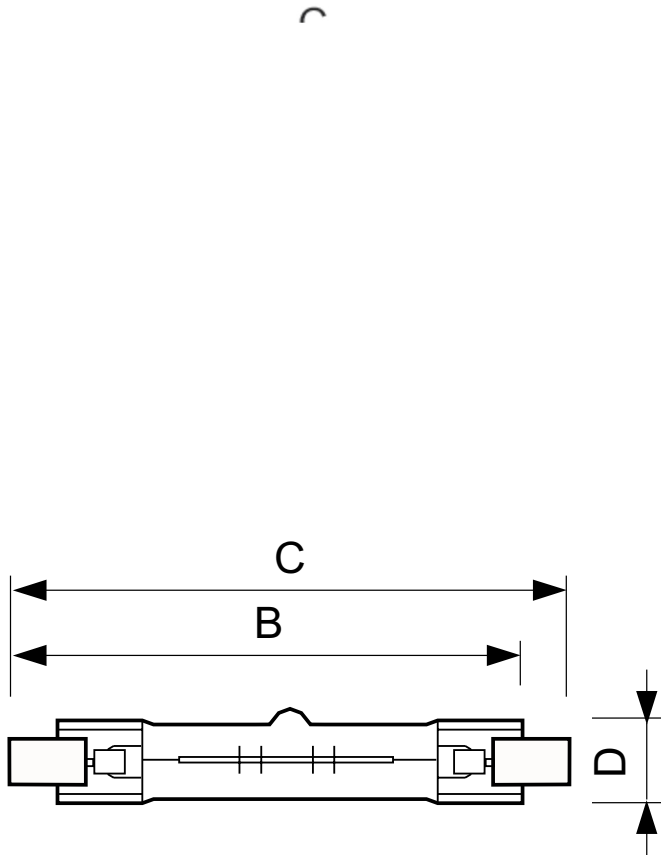


R7s

R7s/10, T11/T12

Double Ended Linear

Dimensional drawing



Product	D (max)	B (max)	B	B (min)	C (max)
Double Ended Linear PLUS PRO S 500W R7s 120V 1CT/12	12 mm	115.8 mm	114.2 mm	112.6 mm	117.6 mm
Double Ended Linear BC300T3Q/CL 130V 6/2	12 mm	115.8 mm	114.2 mm	112.6 mm	117.6 mm
Double Ended Linear BC500T3Q/CL 130V 6/2	12 mm	115.8 mm	114.2 mm	112.6 mm	117.6 mm
Double Ended Linear BC500T3Q/CL/TP 120V 6/2PK	12 mm	115.8 mm	114.2 mm	112.6 mm	117.6 mm
Double Ended Linear BC150T3Q/CL LONG 12/1	12 mm	115.8 mm	114.2 mm	112.6 mm	117.6 mm
Double Ended Linear BC300T3Q/CL/TP 120V 6/2PK	12 mm	115.8 mm	114.2 mm	112.6 mm	117.6 mm

Product	D (max)	B (max)	B	B (min)	C (max)
Double Ended Linear BC150T3Q/CL 12/1	12 mm	76.5 mm	74.9 mm	73.3 mm	78.3 mm
Double Ended Linear BC100T3Q/CL 12/1	12 mm	76.5 mm	74.9 mm	73.3 mm	78.3 mm
Double Ended Linear BC250T3Q/CL 120V 12/1PK	12 mm	76.5 mm	74.9 mm	73.3 mm	78.3 mm

Controls and Dimming	
Dimmable	Yes
Operating and Electrical	
Starting Time (Nom)	0.0 s
General Information	
Cap-Base	R7S
Nominal Lifetime (Nom)	2000 h
Rated Lifetime (Hours)	2000 h
Luminaire Design Requirements	
Bulb Temperature (Max)	900 °C
Light Technical	
Correlated Color Temperature (Nom)	2900 K
Color Rendering Index (Nom)	100
Mechanical and Housing	
Bulb Finish	Clear
Bulb Shape	T3

Approval and Application

Order Code	Full Product Name	Energy Efficiency Label (EEL)
200105	Double Ended Linear 500T3Q/CL120V 12PK	D
415695	Double Ended Linear BC300T3Q/CL 130V 6/2	E
415703	Double Ended Linear BC500T3Q/CL 130V 6/2	D
415729	Double Ended Linear BC500T3Q/CL/TP 120V 6/2PK	D
415752	Double Ended Linear BC150T3Q/CL LONG 12/1	E
415711	Double Ended Linear BC300T3Q/CL/TP 120V 6/2PK	E
415612	Double Ended Linear BC150T3Q/CL 12/1	D
415604	Double Ended Linear BC100T3Q/CL 12/1	E
415620	Double Ended Linear BC250T3Q/CL 120V 12/1PK	E

Operating and Electrical

Double Ended Linear

Order Code	Full Product Name	Lamp Current (Nom)	Voltage (Nom)	Power (Rated) (Nom)
200105	Double Ended Linear 500T3Q/CL120V 12PK	4.17 A	120 V	500 W
415695	Double Ended Linear BC300T3Q/CL 130V 6/2	2.31 A	130 V	300 W
415703	Double Ended Linear BC500T3Q/CL 130V 6/2	3.94 A	127 V	500 W
415729	Double Ended Linear BC500T3Q/CL/TP 120V 6/2PK	4.17 A	120 V	500 W
415752	Double Ended Linear BC150T3Q/CL LONG 12/1	1.25 A	120 V	150 W

Order Code	Full Product Name	Lamp Current (Nom)	Voltage (Nom)	Power (Rated) (Nom)
415711	Double Ended Linear BC300T3Q/CL/TP 120V 6/2PK	2.5 A	120 V	300 W
415612	Double Ended Linear BC150T3Q/CL 12/1	1.25 A	120 V	150 W
415604	Double Ended Linear BC100T3Q/CL 12/1	0.83 A	120 V	100 W
415620	Double Ended Linear BC250T3Q/CL 120V 12/1PK	2.08 A	120 V	250 W

General Information

Order Code	Full Product Name	Operating Position
200105	Double Ended Linear 500T3Q/CL120V 12PK	Universal
415695	Double Ended Linear BC300T3Q/CL 130V 6/2	Universal
415703	Double Ended Linear BC500T3Q/CL 130V 6/2	Universal
415729	Double Ended Linear BC500T3Q/CL/TP 120V 6/2PK	Horizontal +/- 4 D
415752	Double Ended Linear BC150T3Q/CL LONG 12/1	Horizontal +/- 4 D

Order Code	Full Product Name	Operating Position
415711	Double Ended Linear BC300T3Q/CL/TP 120V 6/2PK	Horizontal +/- 4 D
415612	Double Ended Linear BC150T3Q/CL 12/1	-
415604	Double Ended Linear BC100T3Q/CL 12/1	Universal
415620	Double Ended Linear BC250T3Q/CL 120V 12/1PK	-

Light Technical

Order Code	Full Product Name	Luminous Efficacy (rated) (Nom)	Luminous Flux (Nom)
200105	Double Ended Linear 500T3Q/CL120V 12PK	19.0 lm/W	9500 lm
415695	Double Ended Linear BC300T3Q/CL 130V 6/2	15.3 lm/W	4600 lm
415703	Double Ended Linear BC500T3Q/CL 130V 6/2	18.4 lm/W	9200 lm
415729	Double Ended Linear BC500T3Q/CL/TP 120V 6/2PK	19 lm/W	9500 lm
415752	Double Ended Linear BC150T3Q/CL LONG 12/1	13.3 lm/W	2000 lm

Order Code	Full Product Name	Luminous Efficacy (rated) (Nom)	Luminous Flux (Nom)
415711	Double Ended Linear BC300T3Q/CL/TP 120V 6/2PK	16 lm/W	5000 lm
415612	Double Ended Linear BC150T3Q/CL 12/1	16 lm/W	2400 lm
415604	Double Ended Linear BC100T3Q/CL 12/1	14 lm/W	1400 lm
415620	Double Ended Linear BC250T3Q/CL 120V 12/1PK	16 lm/W	4000 lm

