



T8

28T8/COR/96-840/IF42/G/FA8 10/1

Our TLEDs are available in InstantFit (Type A / Type C) or MainsFit (Ballast bypass / Type B) versions. The InstantFit lamps work on a broad variety of ballasts and LED drivers. Only InstantFit has over 15,000 lamp & ballast combinations delivering even light output, energy savings and a long lifetime. Our MainsFit products feature a double-ended design, simplifying installation while a proprietary safety circuit minimizes a shock risk. Lamp sizes range from 2-foot to 8-foot and U-bend with a variety of lumen outputs.

Product data

General information	
Base	FA8 [FA8]
EU RoHS compliant	Yes
Nominal Lifetime (Nom)	50000 h
Switching Cycle	50000X
Tier	CorePro
Light technical	
Color Code	841 [CCT of 4100K (841)]
Beam Angle (Nom)	240 °
Initial lumen (Nom)	4200 lm
Color Designation	Cool White (CW)
Correlated Color Temperature (Nom)	4000 K
Luminous Efficacy (rated) (Nom)	150.00 lm/W
Color Consistency	ANSI
Color Rendering Index (Nom)	80
LLMF At End Of Nominal Lifetime (Nom)	70 %
Operating and electrical	
Input Frequency	35K to 150K Hz

Power (Rated) (Nom)	28 W
Lamp Current (Max)	400 mA
Lamp Current (Min)	100 mA
Starting Time (Nom)	0.5 s
Warm Up Time to 60% Light (Nom)	0.5 s
UL Type	TLED_Type A; UL listed HF
Power Factor (Nom)	0.9
Voltage (Nom)	120-277 V
Temperature	
T-Ambient (Max)	113 °F
T-Ambient (Min)	-4 °F
T-Storage (Max)	149 °F
T-Storage (Min)	-40 °F
T-Case Maximum (Nom)	113 °F
Controls and dimming	
Dimmable	No

T8

Mechanical and housing

Bulb Finish	Frosted
Bulb Material	Glass
Product Length	94-1/2 in
Bulb Shape	Tube, double-ended

Approval and application

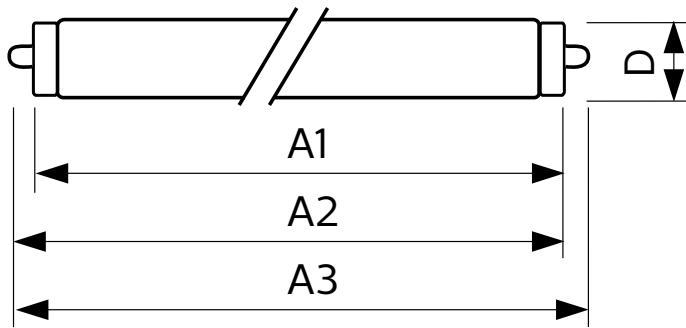
Energy Saving Product	Yes
Approbation Marks	RoHS compliance UL certificate

Product data

Order product name	28T8/COR/96-840/IF42/G/FA8 10/1
--------------------	---------------------------------

EAN/UPC - Product	046677580292
Order code	580290
Numerator - Quantity Per Pack	1
Numerator - Packs per outer box	10
Material Nr. (12NC)	929003556804
Net Weight (Piece)	0.882 lb
Model Number	9290035568

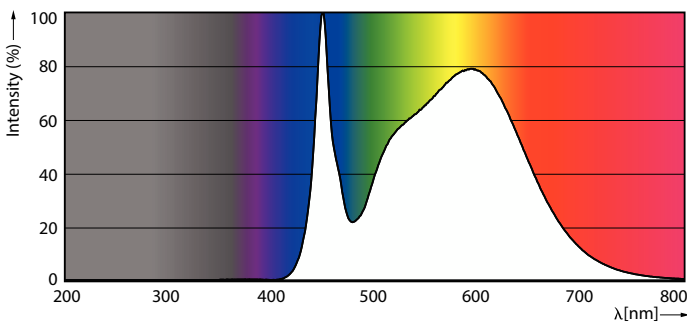
Dimensional drawing



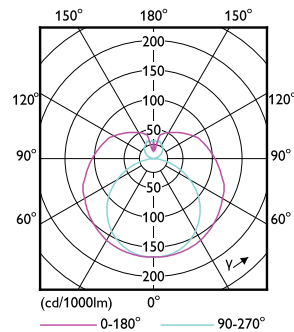
28T8/COR/96-840/IF42/G/FA8 10/1

Product	D1	D2	A1	A2	A3
28T8/COR/96-840/ IF42/G/FA8 10/1	1-1/16 in	1-1/8 in	93-3/16 in	93-9/16 in	93-15/16 in

Photometric data

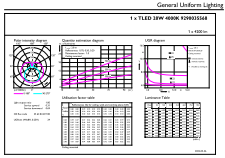


Spectral Power Distribution Colour



Light Distribution Diagram

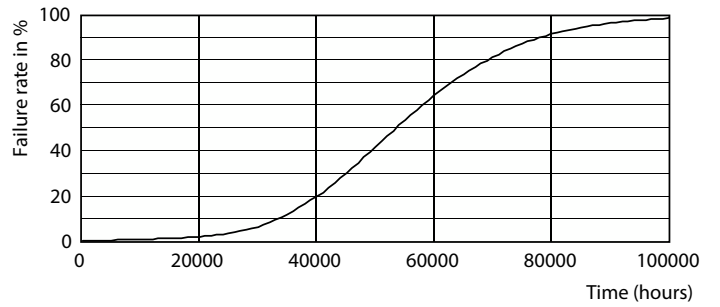
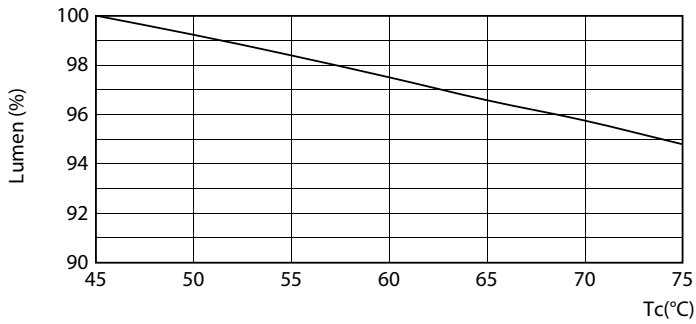
Photometric data



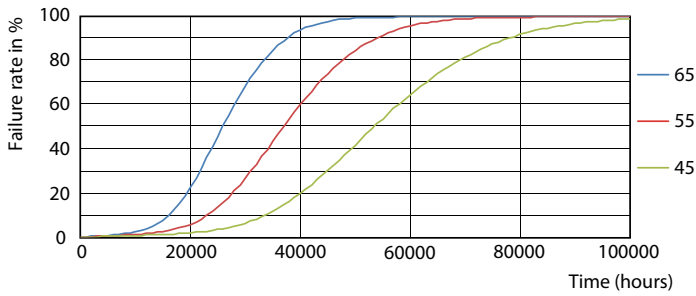
© 2023 Philips Lighting B.V. Page 10

General uniform lighting

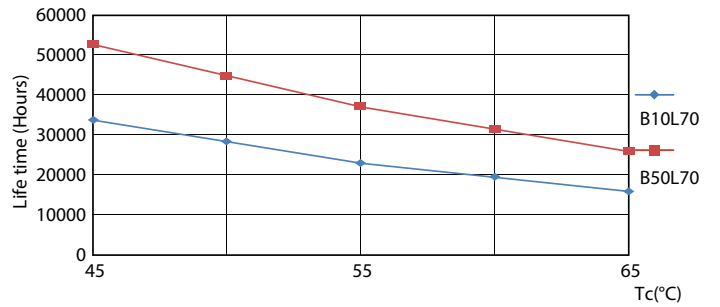
Lifetime



LumenVsTc



Life Expectancy Diagram

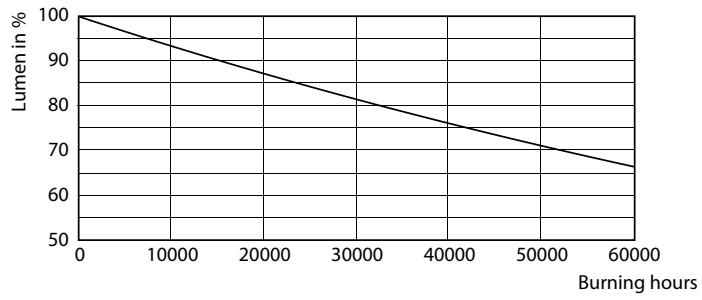


FailureRate

LifetimeVsTc

T8

Lifetime



Lumen Maintenance Diagram

