



T8

11.5T8/COR/48-835/IF20/G/DIM 25/1

Our TLEDs are available in InstantFit (Type A / Type C) or MainsFit (Ballast bypass / Type B) versions. The InstantFit lamps work on a broad variety of ballasts and LED drivers. Only InstantFit has over 15,000 lamp & ballast combinations delivering even light output, energy savings and a long lifetime. Our MainsFit products feature a double-ended design, simplifying installation while a proprietary safety circuit minimizes a shock risk. Lamp sizes range from 2-foot to 8-foot and U-bend with a variety of lumen outputs.

Product data

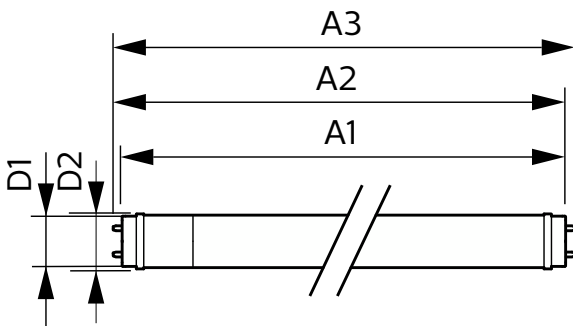
General information		Lamp Current (Max)		Temperature	
Base	G13 [Medium Bi-Pin Fluorescent]	Lamp Current (Min)	260 mA	T-Ambient (Max)	45 °C
EU RoHS compliant	Yes	Starting Time (Nom)	80 mA	T-Ambient (Min)	-20 °C
Nominal Lifetime (Nom)	50000 h	Warm Up Time to 60% Light (Nom)	0.5 s	T-Storage (Max)	65 °C
Switching Cycle	50000X	UL Type	TLED_Type A; UL listed HF	T-Storage (Min)	-40 °C
Light technical		Power Factor (Nom)	0.9	T-Case Maximum (Nom)	40 °C
Color Code	835 [CCT of 3500K]	Voltage (Nom)	120-277 V	Controls and dimming	
Beam Angle (Nom)	240 °			Dimmable	No
Initial lumen (Nom)	2000 lm			Mechanical and housing	
Color Designation	White (WH)			Bulb Finish	Frosted
Correlated Color Temperature (Nom)	3500 K				
Luminous Efficacy (rated) (Nom)	173.00 lm/W				
Color Consistency	<6				
Color Rendering Index (Nom)	80				
LLMF At End Of Nominal Lifetime (Nom)	70 %				
Operating and electrical					
Input Frequency	25K to 105K Hz				
Power (Rated) (Nom)	11.5 W				

T8

Bulb Material	Glass
Product Length	48 in
Bulb Shape	Tube, double-ended
Approval and application	
Energy Saving Product	Yes
Approbation Marks	DLC compliance
Approbation Marks	RoHS compliance UL certificate
Product data	
Order product name	11.5T8/COR/48-835/IF20/G/DIM 25/1

EAN/UPC - Product	046677580261
Order code	580266
Numerator - Quantity Per Pack	1
Numerator - Packs per outer box	25
Material Nr. (12NC)	929003556504
Net Weight (Piece)	0.441 lb
Model Number	9290035565

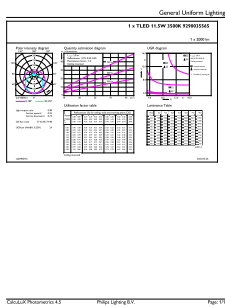
Dimensional drawing



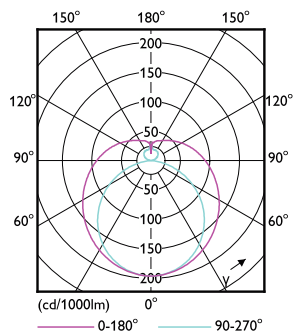
11.5T8/COR/48-835/IF20/G/DIM 25/1

Product	D1	D2	A1	A2	A3
11.5T8/COR/48-835/IF20/G/DIM 25/1	1-1/16 in	1-1/16 in	47-3/16 in	47-1/2 in	47-3/4 in

Photometric data

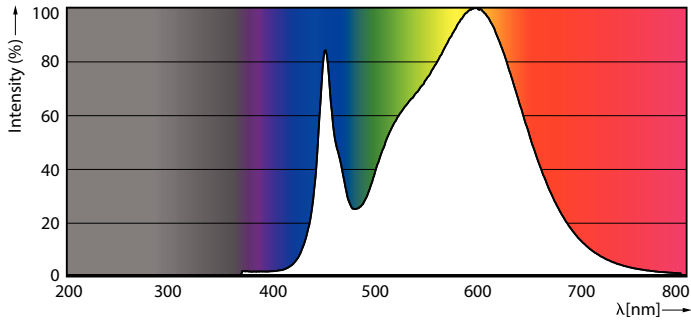


General uniform lighting



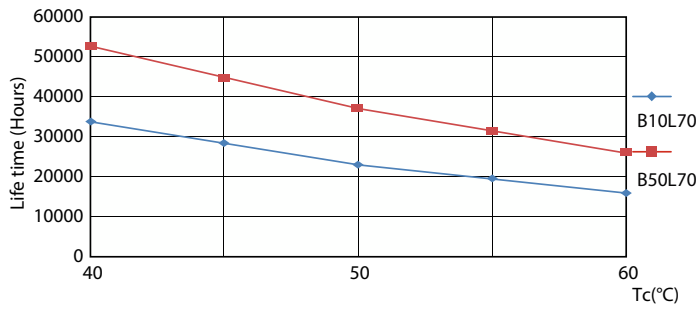
Light Distribution Diagram

Photometric data

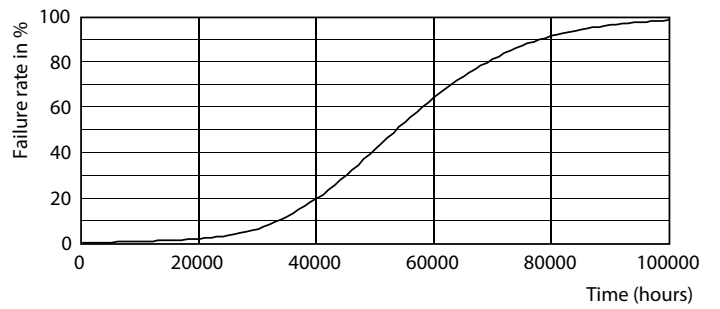


Spectral Power Distribution Colour

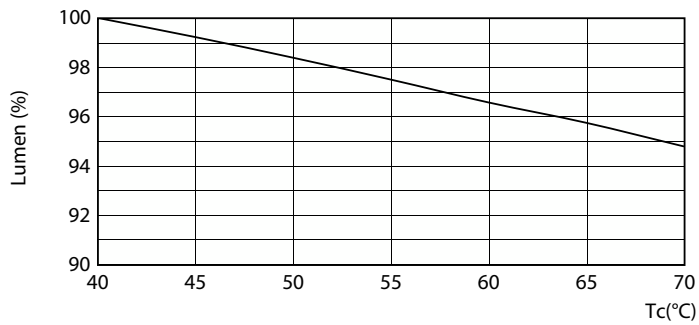
Lifetime



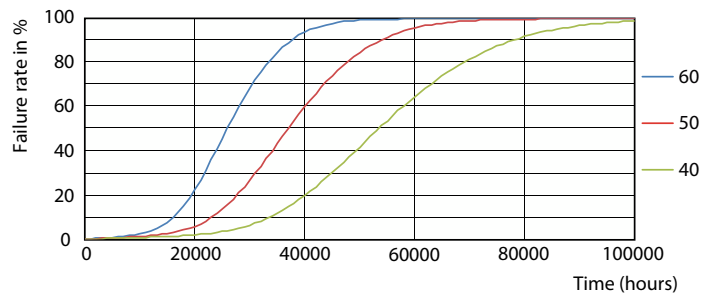
LifetimeVsTc



Life Expectancy Diagram



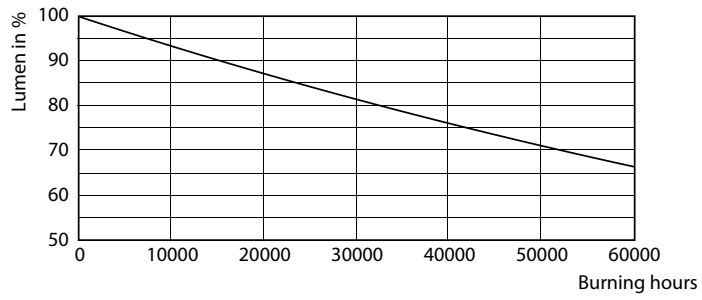
LumenVsTc



FailureRate

T8

Lifetime



Lumen Maintenance Diagram

