

# T8

## 14.5T8/COR/48-5CCT/MF18/G/DIM 25/1

Our TLEDs are available in InstantFit (Type A / Type C) or MainsFit (Ballast bypass / Type B) versions. The InstantFit lamps work on a broad variety of ballasts and LED drivers. Only InstantFit has over 15,000 lamp & ballast combinations delivering even light output, energy savings and a long lifetime. Our MainsFit products feature a double-ended design, simplifying installation while a proprietary safety circuit minimizes a shock risk. Lamp sizes range from 2-foot to 8-foot and U-bend with a variety of lumen outputs.

### Product data

General information	
Base	G13 [ Medium Bi-Pin Fluorescent]
EU RoHS compliant	Yes
Nominal Lifetime (Nom)	50000 h
Switching Cycle	50000X
Technical Type	LEDETECH-LOV
Light technical	
Color Code	5CCT
Beam Angle (Nom)	240 °
Initial lumen (Nom)	1800 lm
Color Designation	5CCT
Correlated Color Temperature (Nom)	5 CCT K
Luminous Efficacy (rated) (Nom)	124.00 lm/W
Color Consistency	6SCDM
Color Rendering Index (Nom)	80
LLMF At End Of Nominal Lifetime (Nom)	70 %
Operating and electrical	
Input Frequency	50 to 60 Hz

Power (Rated) (Nom)	14.5 W
Lamp Current (Max)	125 mA
Lamp Current (Min)	58 mA
Starting Time (Nom)	0.5 s
Warm Up Time to 60% Light (Nom)	0.5 s
UL Type	TLED_Type B; UL classified double end
Power Factor (Nom)	0.9
Voltage (Nom)	120-277 V
Temperature	
T-Ambient (Max)	45 °C
T-Ambient (Min)	-20 °C
T-Storage (Max)	65 °C
T-Storage (Min)	-40 °C
T-Case Maximum (Nom)	70 °C
Controls and dimming	
Dimmable	Only with specific dimmers

**Mechanical and housing**

Bulb Finish	Frosted
Bulb Material	Glass
Product Length	48 in
Bulb Shape	Tube, double-ended

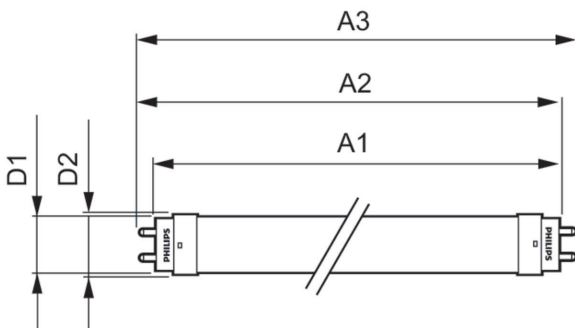
**Approval and application**

Energy Saving Product	Yes
Approbation Marks	RoHS compliance UL certificate DLC compliance

**Product data**

Order product name	14.5T8/COR/48-5CCT/MF18/G/DIM 25/1
EAN/UPC - Product	046677579678
Order code	579672
Numerator - Quantity Per Pack	1
Numerator - Packs per outer box	25
Material Nr. (12NC)	929003540104
Copy Net Weight (Piece)	0.441 lb

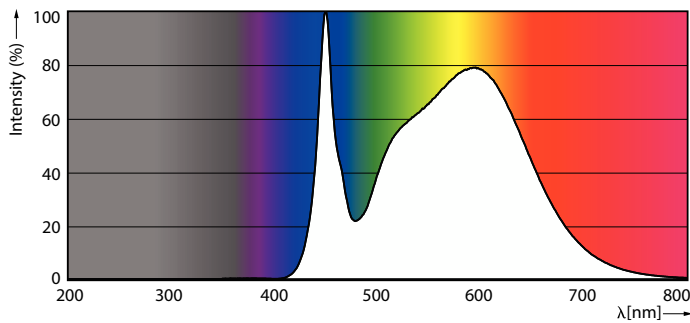
**Dimensional drawing**



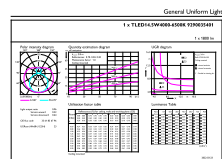
14.5T8/COR/48-5CCT/MF18/G/DIM 25/1

Product	D1	D2	A1	A2	A3
14.5T8/COR/48-5CCT/MF18/G/DIM 25/1	25.7 mm	28 mm	1198.2 mm	1205.3 mm	1212.4 mm

**Photometric data**

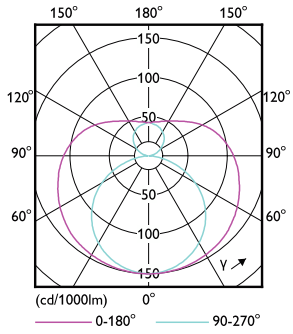


Spectral Power Distribution Colour



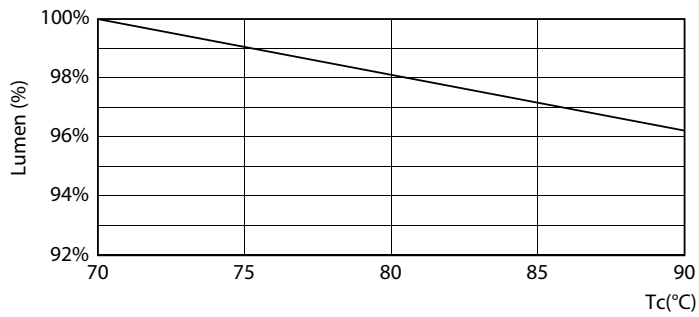
General uniform lighting

Photometric data

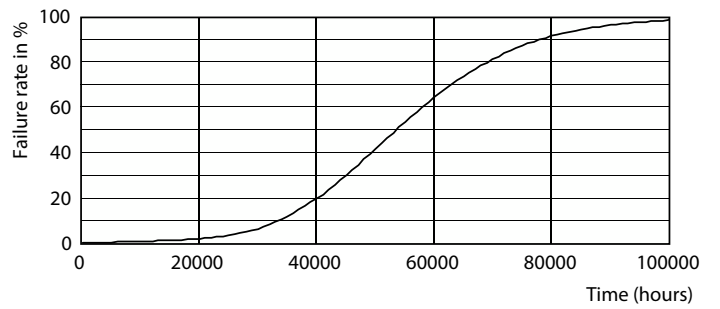


Light Distribution Diagram

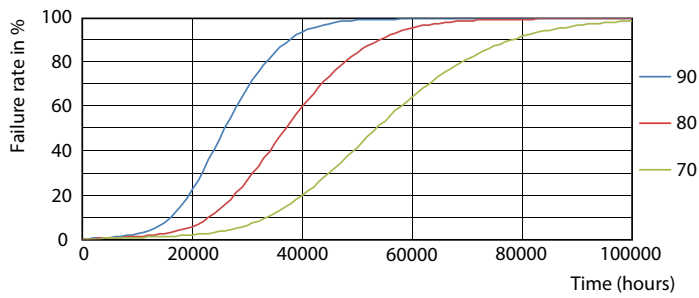
Lifetime



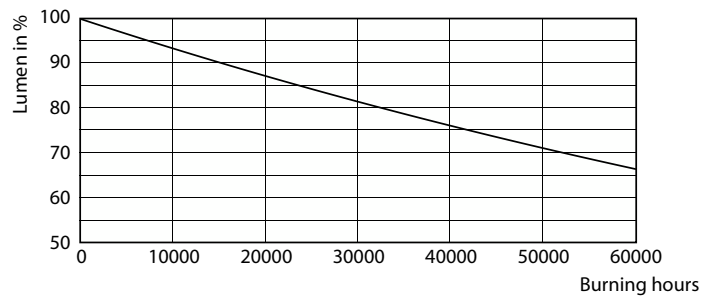
LumenVsTc



Life Expectancy Diagram



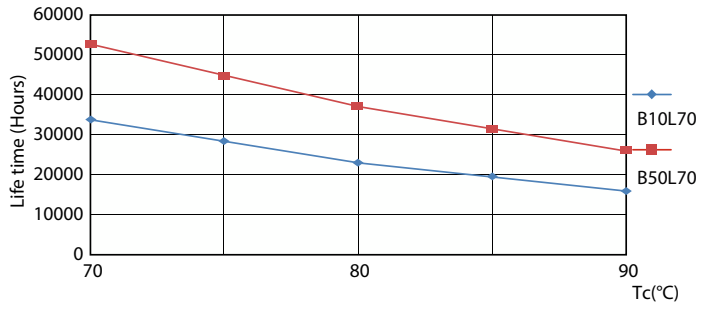
FailureRate



Lumen Maintenance Diagram

# T8

## Lifetime



LifetimeVsTc

