



T8

14.5T8/MAS/48-850/MF21/P/DIM 25/1

Our TLEDs are available in InstantFit (Type A / Type C) or MainsFit (Ballast bypass / Type B) versions. The InstantFit lamps work on a broad variety of ballasts and LED drivers. Only InstantFit has over 15,000 lamp & ballast combinations delivering even light output, energy savings and a long lifetime. Our MainsFit products feature a double-ended design, simplifying installation while a proprietary safety circuit minimizes a shock risk. Lamp sizes range from 2-foot to 8-foot and U-bend with a variety of lumen outputs.

Product data

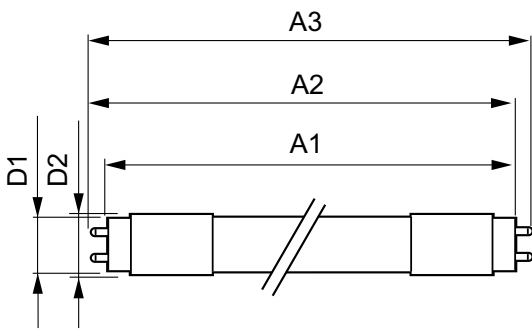
General information		Lamp Current (Max)	
Base	G13 [Medium Bi-Pin Fluorescent]		125 mA
EU RoHS compliant	Yes	Lamp Current (Min)	58 mA
Nominal Lifetime (Nom)	70000 h	Starting Time (Nom)	0.5 s
Switching Cycle	50000X	Warm Up Time to 60% Light (Nom)	0.5 s
		UL Type	TLED_Type B; UL classified double end
		Power Factor (Nom)	0.9
		Voltage (Nom)	120-277 V
Light technical		Temperature	
Color Code	850 [CCT of 5000K]	T-Ambient (Max)	113 °F
Beam Angle (Nom)	180 °	T-Ambient (Min)	-4 °F
Initial lumen (Nom)	2100 lm	T-Storage (Max)	149 °F
Color Designation	Daylight	T-Storage (Min)	-40 °F
Correlated Color Temperature (Nom)	5000 K	T-Case Maximum (Nom)	158 °F
Luminous Efficacy (rated) (Nom)	144.00 lm/W		
Color Consistency	<5	Controls and dimming	
Color Rendering Index (Nom)	80	Dimmable	Only with specific dimmers
LLMF At End Of Nominal Lifetime (Nom)	70 %		
Operating and electrical		Mechanical and housing	
Input Frequency	50 to 60 Hz	Bulb Finish	Frosted
Power (Rated) (Nom)	14.5 W		

T8

Bulb Material	Glass
Product Length	48 in
Bulb Shape	Tube, double-ended
Approval and application	
Energy Saving Product	Yes
Approbation Marks	DLC compliance
Approbation Marks	RoHS compliance UL certificate
Product data	
Order product name	14.5T8/MAS/48-850/MF21/P/DIM 25/1

EAN/UPC - Product	046677579500
Order code	579508
Numerator - Quantity Per Pack	1
Numerator - Packs per outer box	25
Material Nr. (12NC)	929003525704
Net Weight (Piece)	0.463 lb
Model Number	9290035257

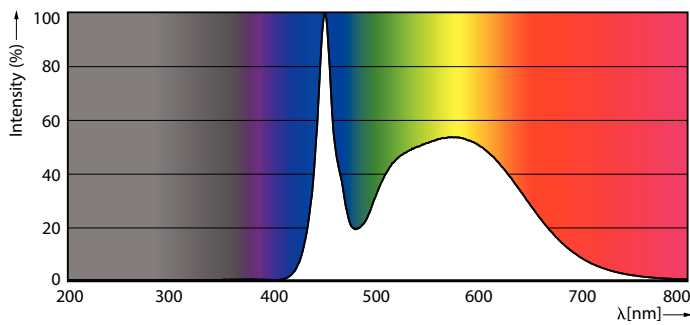
Dimensional drawing



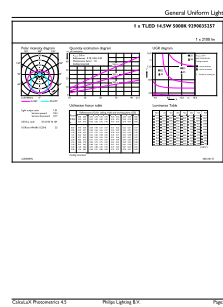
14.5T8/MAS/48-850/MF21/P/DIM 25/1

Product	D1	D2	A1	A2	A3
14.5T8/MAS/48-850/ MF21/P/DIM 25/1	1-1/16 in	1-1/8 in	47-3/16 in	47-1/2 in	47-3/4 in

Photometric data

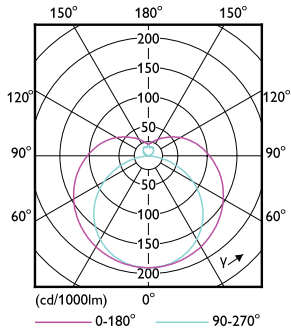


Spectral Power Distribution Colour



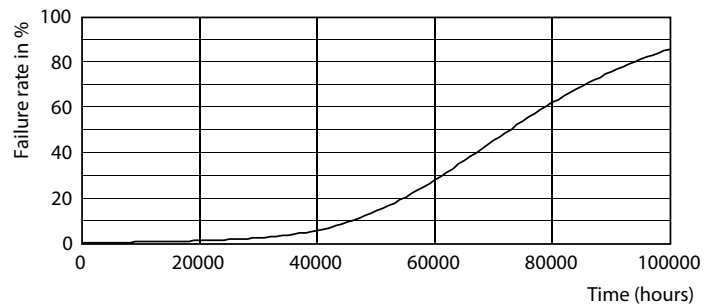
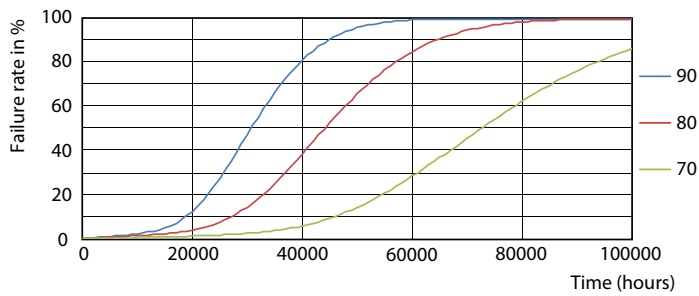
General uniform lighting

Photometric data



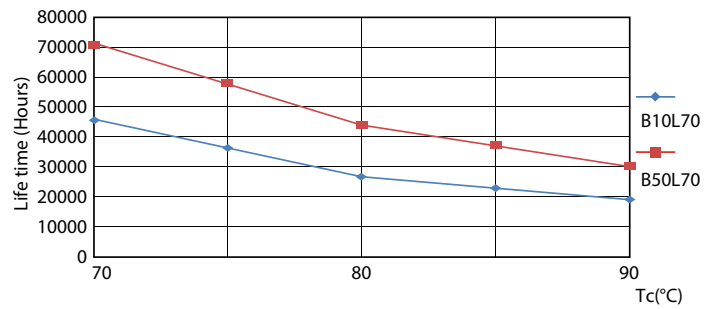
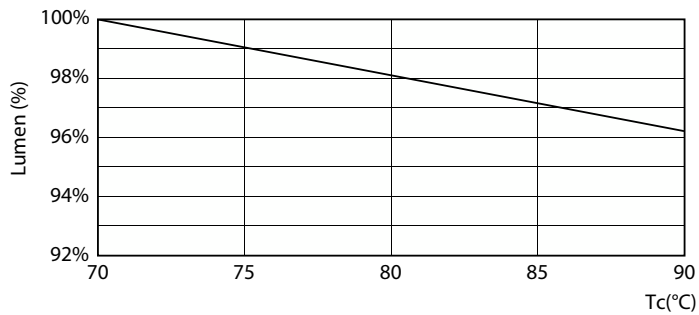
Light Distribution Diagram

Lifetime



FailureRate

Life Expectancy Diagram

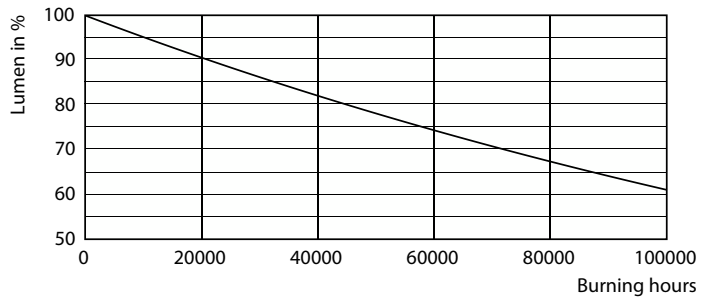


LumenVsTc

LifetimeVsTc

T8

Lifetime



Lumen Maintenance Diagram

