

# T8

## 14.5T8/MAS/48-830/MF20/P/DIM 25/1

Our TLEDs are available in InstantFit (Type A / Type C) or MainsFit (Ballast bypass / Type B) versions. The InstantFit lamps work on a broad variety of ballasts and LED drivers. Only InstantFit has over 15,000 lamp & ballast combinations delivering even light output, energy savings and a long lifetime. Our MainsFit products feature a double-ended design, simplifying installation while a proprietary safety circuit minimizes a shock risk. Lamp sizes range from 2-foot to 8-foot and U-bend with a variety of lumen outputs.

### Product data

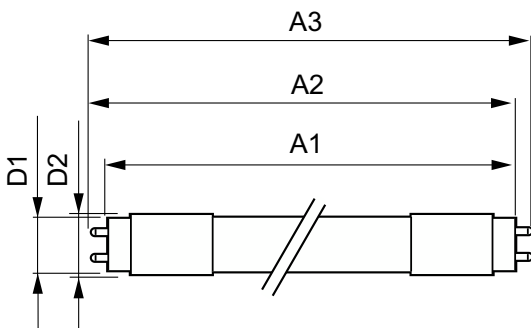
General information		Lamp Current (Max)	
Base	G13 [ Medium Bi-Pin Fluorescent]		125 mA
EU RoHS compliant	Yes	Lamp Current (Min)	58 mA
Nominal Lifetime (Nom)	70000 h	Starting Time (Nom)	0.5 s
Switching Cycle	50000X	Warm Up Time to 60% Light (Nom)	0.5 s
Light technical		UL Type	TLED_Type B; UL classified double end
Color Code	830 [ CCT of 3000K]	Power Factor (Nom)	0.9
Beam Angle (Nom)	180 °	Voltage (Nom)	120-277 V
Initial lumen (Nom)	2000 lm	Temperature	
Color Designation	White (WH)	T-Ambient (Max)	113 °F
Correlated Color Temperature (Nom)	3000 K	T-Ambient (Min)	-4 °F
Luminous Efficacy (rated) (Nom)	137.00 lm/W	T-Storage (Max)	149 °F
Color Consistency	6SCDM	T-Storage (Min)	-40 °F
Color Rendering Index (Nom)	80	T-Case Maximum (Nom)	158 °F
LLMF At End Of Nominal Lifetime (Nom)	70 %	Controls and dimming	
Operating and electrical		Dimmable	Only with specific dimmers
Input Frequency	50 to 60 Hz	Mechanical and housing	
Power (Rated) (Nom)	14.5 W	Bulb Finish	Frosted

# T8

Bulb Material	Glass
Product Length	48 in
Bulb Shape	Tube, double-ended
<b>Approval and application</b>	
Energy Saving Product	Yes
Approbation Marks	DLC compliance
Approbation Marks	RoHS compliance UL certificate
<b>Product data</b>	
Order product name	14.5T8/MAS/48-830/MF20/P/DIM 25/1

EAN/UPC - Product	046677579470
Order code	579474
Numerator - Quantity Per Pack	1
Numerator - Packs per outer box	25
Material Nr. (12NC)	929003525404
Net Weight (Piece)	0.463 lb
Model Number	9290035254

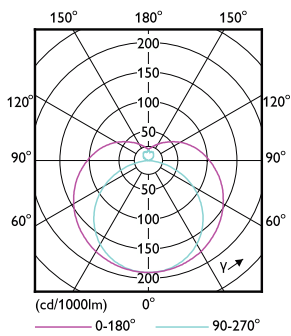
## Dimensional drawing



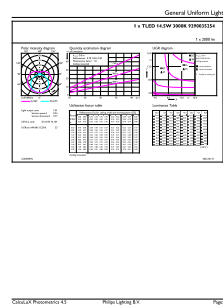
14.5T8/MAS/48-830/MF20/P/DIM 25/1

Product	D1	D2	A1	A2	A3
14.5T8/MAS/48-830/MF20/P/DIM 25/1	1-1/16 in	1-1/8 in	47-3/16 in	47-1/2 in	47-3/4 in

## Photometric data

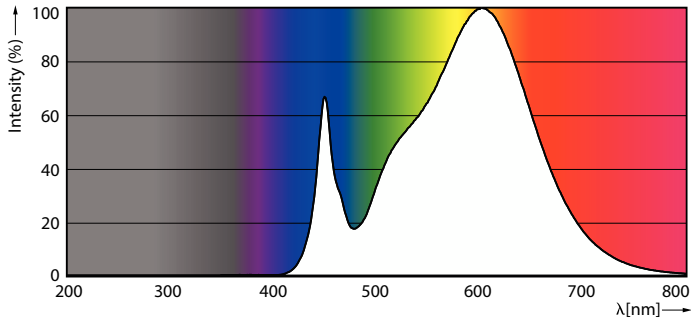


Light Distribution Diagram



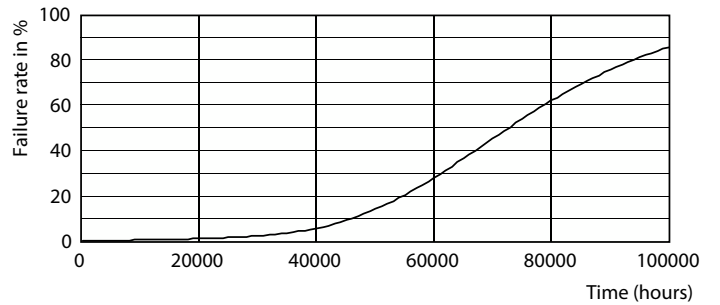
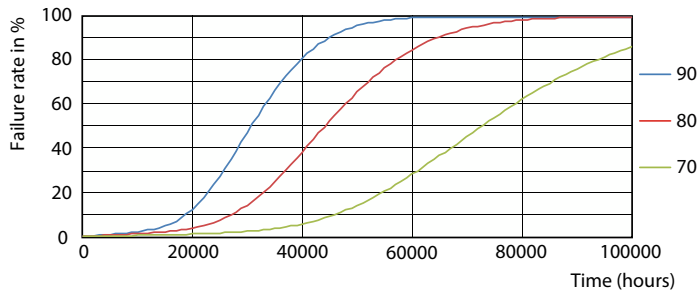
General uniform lighting

Photometric data



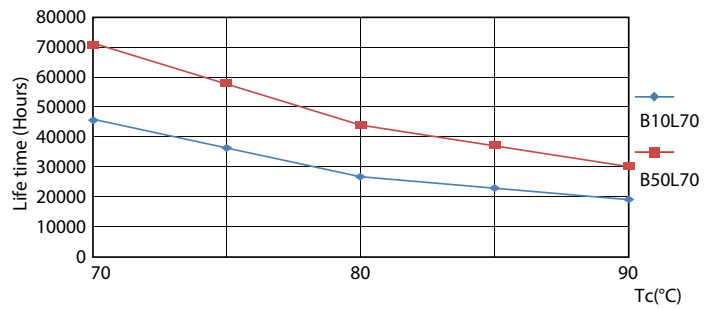
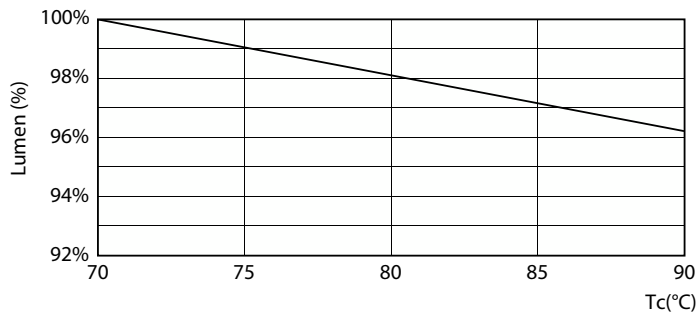
Spectral Power Distribution Colour

Lifetime



FailureRate

Life Expectancy Diagram

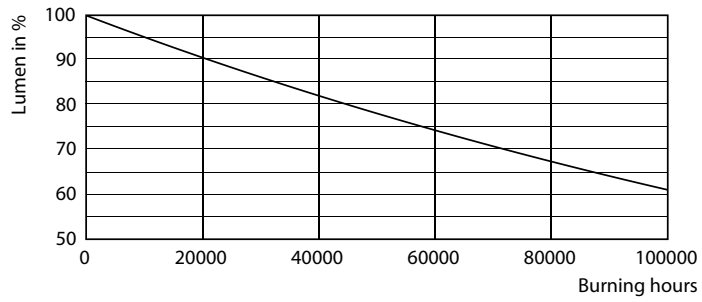


LumenVsTc

LifetimeVsTc

# T8

## Lifetime



Lumen Maintenance Diagram

