

T8

14.5T8/COR/48-840/MF21/G/DIM 25/1

Our TLEDs are available in InstantFit (Type A / Type C) or MainsFit (Ballast bypass / Type B) versions. The InstantFit lamps work on a broad variety of ballasts and LED drivers. Only InstantFit has over 15,000 lamp & ballast combinations delivering even light output, energy savings and a long lifetime. Our MainsFit products feature a double-ended design, simplifying installation while a proprietary safety circuit minimizes a shock risk. Lamp sizes range from 2-foot to 8-foot and U-bend with a variety of lumen outputs.

Product data

General information		Power (Rated) (Nom)	
Base	G13 [Medium Bi-Pin Fluorescent]		14.5 W
EU RoHS compliant	Yes	Lamp Current (Max)	125 mA
Nominal Lifetime (Nom)	50000 h	Lamp Current (Min)	58 mA
Switching Cycle	50000X	Starting Time (Nom)	0.5 s
Tier	CorePro	Warm Up Time to 60% Light (Nom)	0.5 s
Light technical		UL Type	TLED_Type B; UL classified double end
Color Code	841 [CCT of 4100K (841)]	Power Factor (Nom)	0.9
Beam Angle (Nom)	240 °	Voltage (Nom)	120-277 V
Initial lumen (Nom)	2100 lm	Temperature	
Color Designation	Cool White (CW)	T-Ambient (Max)	113 °F
Correlated Color Temperature (Nom)	4000 K	T-Ambient (Min)	-4 °F
Luminous Efficacy (rated) (Nom)	144.00 lm/W	T-Storage (Max)	149 °F
Color Consistency	6SCDM	T-Storage (Min)	-40 °F
Color Rendering Index (Nom)	80	T-Case Maximum (Nom)	158 °F
LLMF At End Of Nominal Lifetime (Nom)	70 %	Controls and dimming	
Operating and electrical		Dimmable	Only with specific dimmers
Input Frequency	50 to 60 Hz		

T8

Mechanical and housing

Bulb Finish	Frosted
Bulb Material	Glass
Product Length	47-1/4 in
Bulb Shape	Tube, double-ended

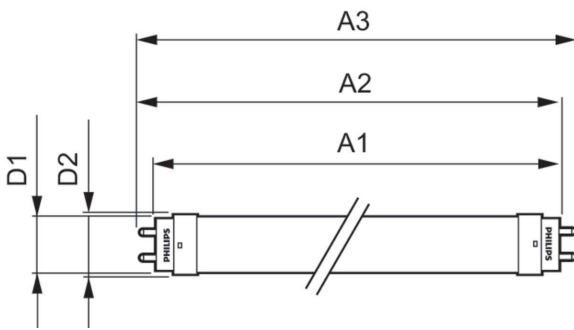
Approval and application

Energy Saving Product	Yes
Approbation Marks	RoHS compliance UL certificate DLC compliance

Product data

Order product name	14.5T8/COR/48-840/MF21/G/DIM 25/1
EAN/UPC - Product	046677579425
Order code	579425
Numerator - Quantity Per Pack	1
Numerator - Packs per outer box	25
Material Nr. (12NC)	929003524804
Net Weight (Piece)	0.441 lb
Model Number	9290035248

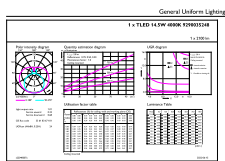
Dimensional drawing



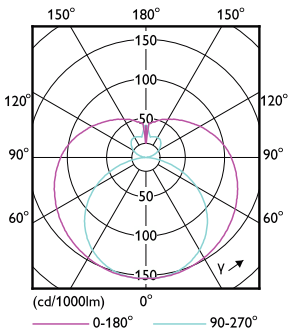
14.5T8/COR/48-840/MF21/G/DIM 25/1

Product	D1	D2	A1	A2	A3
14.5T8/COR/48-840/MF21/G/DIM 25/1	1-1/16 in	1-1/8 in	47-3/16 in	47-1/2 in	47-3/4 in

Photometric data



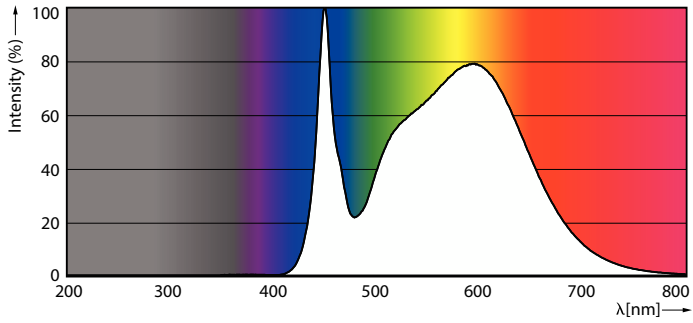
© 2022 Philips Lighting B.V. All rights reserved.



Light Distribution Diagram

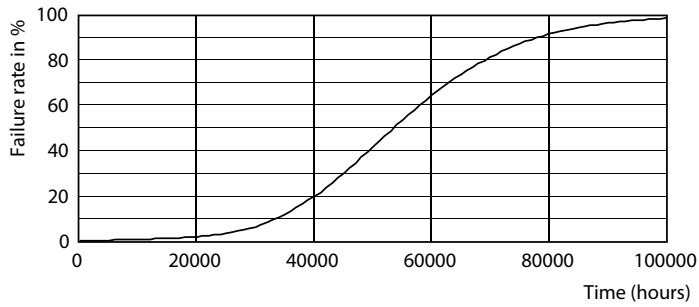
General uniform lighting

Photometric data

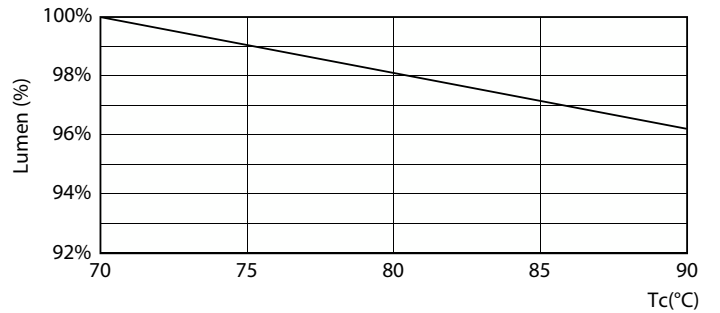


Spectral Power Distribution Colour

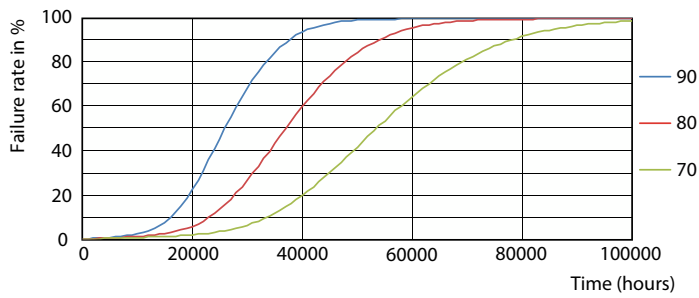
Lifetime



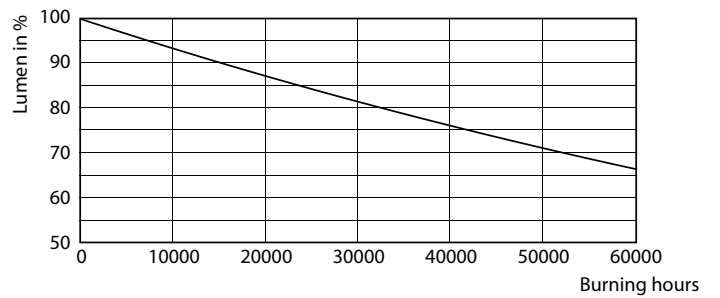
Life Expectancy Diagram



LumenVsTc



FailureRate



Lumen Maintenance Diagram

T8

Lifetime



LifetimeVsTc

