

T8

12T8/COR/48-835/MF17/G/DIM 25/1

Our TLEDs are available in InstantFit (Type A / Type C) or MainsFit (Ballast bypass / Type B) versions. The InstantFit lamps work on a broad variety of ballasts and LED drivers. Only InstantFit has over 15,000 lamp & ballast combinations delivering even light output, energy savings and a long lifetime. Our MainsFit products feature a double-ended design, simplifying installation while a proprietary safety circuit minimizes a shock risk. Lamp sizes range from 2-foot to 8-foot and U-bend with a variety of lumen outputs.

Product data

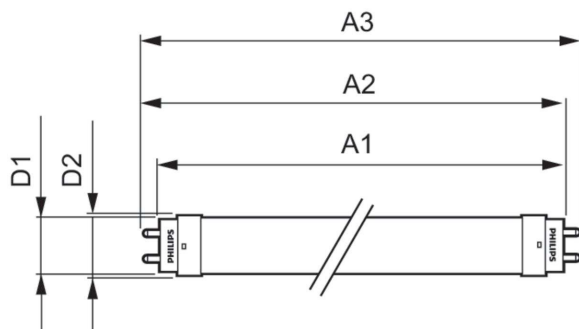
General information		Lamp Current (Max)	
Base	G13 [Medium Bi-Pin Fluorescent]		104 mA
EU RoHS compliant	Yes	Lamp Current (Min)	48 mA
Nominal Lifetime (Nom)	50000 h	Starting Time (Nom)	0.5 s
Switching Cycle	50000X	Warm Up Time to 60% Light (Nom)	0.5 s
		UL Type	TLED_Type B; UL classified double end
		Power Factor (Nom)	0.9
		Voltage (Nom)	120-277 V
Light technical		Temperature	
Color Code	835 [CCT of 3500K]	T-Ambient (Max)	45 °C
Beam Angle (Nom)	240 °	T-Ambient (Min)	-20 °C
Initial lumen (Nom)	1700 lm	T-Storage (Max)	65 °C
Color Designation	White (WH)	T-Storage (Min)	-40 °C
Correlated Color Temperature (Nom)	3500 K	T-Case Maximum (Nom)	70 °C
Luminous Efficacy (rated) (Nom)	141.00 lm/W		
Color Consistency	6SCDM	Controls and dimming	
Color Rendering Index (Nom)	80	Dimmable	Only with specific dimmers
LLMF At End Of Nominal Lifetime (Nom)	70 %		
Operating and electrical		Mechanical and housing	
Input Frequency	50 to 60 Hz	Bulb Finish	Frosted
Power (Rated) (Nom)	12 W		

T8

Bulb Material	Glass
Product Length	48 in
Bulb Shape	Tube, double-ended
Approval and application	
Energy Saving Product	Yes
Approbation Marks	DLC compliance
Approbation Marks	RoHS compliance UL certificate
Product data	
Order product name	12T8/COR/48-835/MF17/G/DIM 25/1

EAN/UPC - Product	046677579357
Order code	579359
Numerator - Quantity Per Pack	1
Numerator - Packs per outer box	25
Material Nr. (12NC)	929003524204
Net Weight (Piece)	0.441 lb
Model Number	9290035242

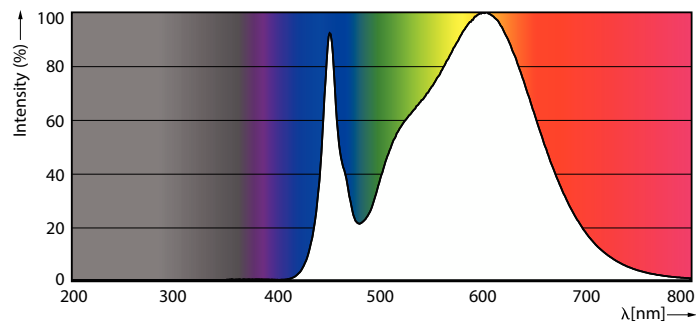
Dimensional drawing



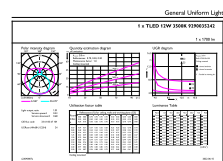
12T8/COR/48-835/MF17/G/DIM 25/1

Product	D1	D2	A1	A2	A3
12T8/COR/48-835/ MF17/G/DIM 25/1	1-1/16 in	1-1/8 in	47-3/16 in	47-1/2 in	47-3/4 in

Photometric data

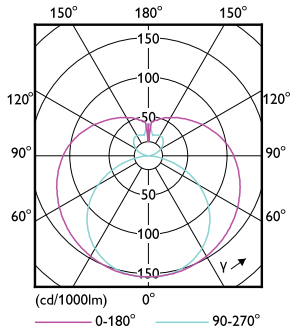


Spectral Power Distribution Colour



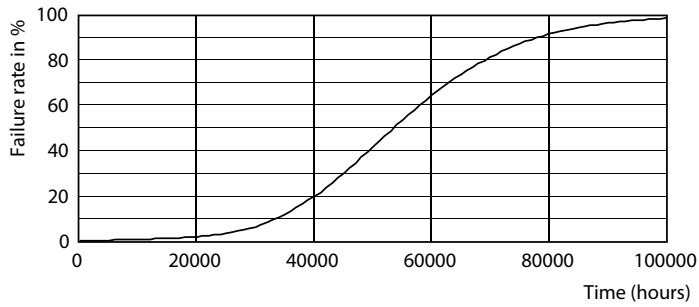
General uniform lighting

Photometric data

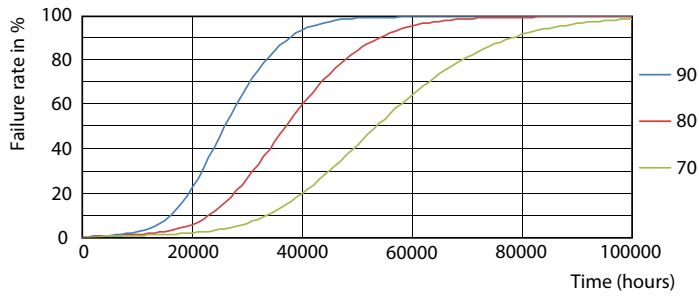


Light Distribution Diagram

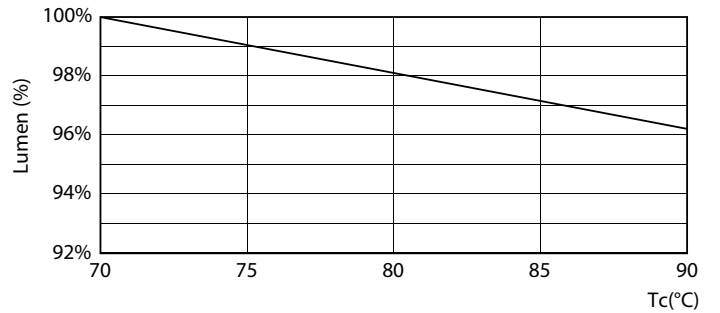
Lifetime



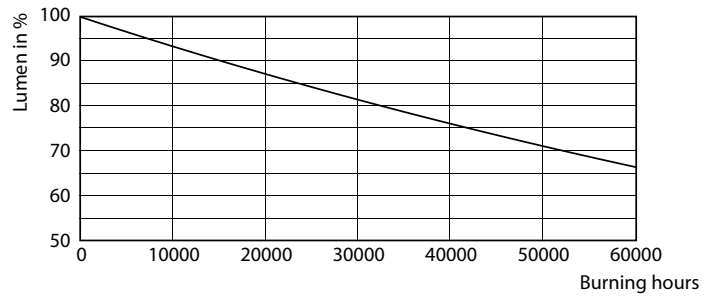
Life Expectancy Diagram



FailureRate



LumenVsTc



Lumen Maintenance Diagram

T8

Lifetime



LifetimeVsTc

