

T8

9.9T8/COR/48-850/MF16/G/DIM 25/1

Our TLEDs are available in InstantFit (Type A / Type C) or MainsFit (Ballast bypass / Type B) versions. The InstantFit lamps work on a broad variety of ballasts and LED drivers. Only InstantFit has over 15,000 lamp & ballast combinations delivering even light output, energy savings and a long lifetime. Our MainsFit products feature a double-ended design, simplifying installation while a proprietary safety circuit minimizes a shock risk. Lamp sizes range from 2-foot to 8-foot and U-bend with a variety of lumen outputs.

Product data

General information		Lamp Current (Max)	
Base	G13 [Medium Bi-Pin Fluorescent]		85 mA
EU RoHS compliant	Yes	Lamp Current (Min)	40 mA
Nominal Lifetime (Nom)	50000 h	Starting Time (Nom)	0.5 s
Switching Cycle	50000X	Warm Up Time to 60% Light (Nom)	0.5 s
Light technical		UL Type	TLED_Type B; UL classified double end
Color Code	850 [CCT of 5000K]	Power Factor (Nom)	0.9
Beam Angle (Nom)	240 °	Voltage (Nom)	120-277 V
Initial lumen (Nom)	1600 lm	Temperature	
Color Designation	Daylight	T-Ambient (Max)	45 °C
Correlated Color Temperature (Nom)	5000 K	T-Ambient (Min)	-20 °C
Luminous Efficacy (rated) (Nom)	161.00 lm/W	T-Storage (Max)	65 °C
Color Consistency	<5	T-Storage (Min)	-40 °C
Color Rendering Index (Nom)	80	T-Case Maximum (Nom)	70 °C
LLMF At End Of Nominal Lifetime (Nom)	70 %	Controls and dimming	
Operating and electrical		Dimmable	Only with specific dimmers
Input Frequency	50 to 60 Hz	Mechanical and housing	
Power (Rated) (Nom)	9.9 W	Bulb Finish	Frosted

T8

Bulb Material	Glass
Product Length	48 in
Bulb Shape	Tube, double-ended

Approval and application

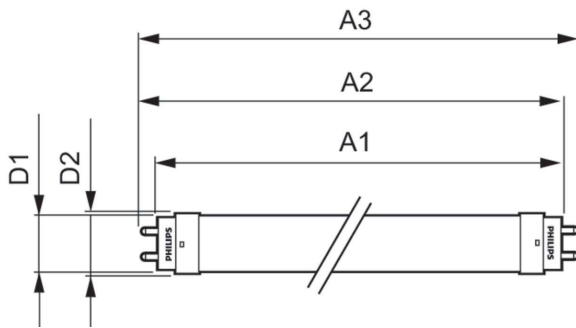
Energy Saving Product	Yes
Approbation Marks	DLC compliance
Approbation Marks	RoHS compliance UL certificate

Product data

Order product name	9.9T8/COR/48-850/MF16/G/DIM 25/1
--------------------	----------------------------------

EAN/UPC - Product	046677579333
Order code	579334
Numerator - Quantity Per Pack	1
Numerator - Packs per outer box	25
Material Nr. (12NC)	929003523904
Net Weight (Piece)	0.441 lb
Model Number	9290035239

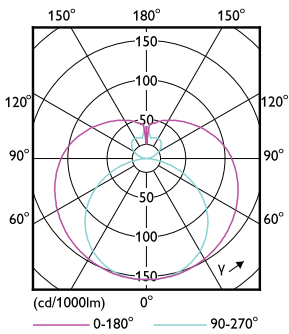
Dimensional drawing



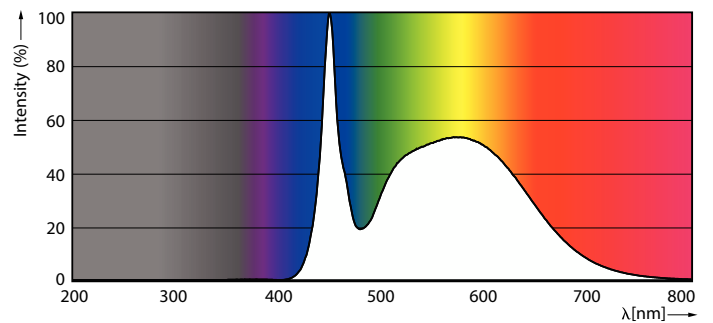
9.9T8/COR/48-850/MF16/G/DIM 25/1

Product	D1	D2	A1	A2	A3
9.9T8/COR/48-850/ MF16/G/DIM 25/1	1-1/16 in	1-1/8 in	47-3/16 in	47-1/2 in	47-3/4 in

Photometric data

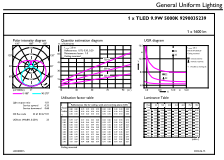


Light Distribution Diagram



Spectral Power Distribution Colour

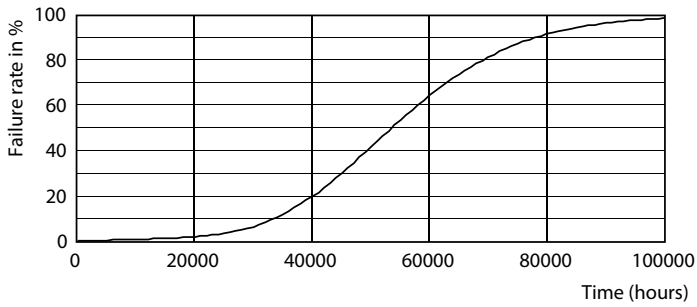
Photometric data



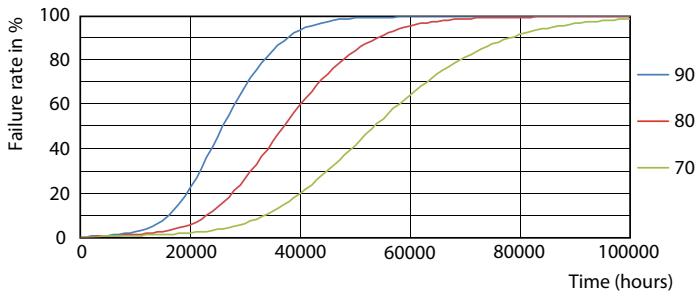
General uniform lighting

General uniform lighting

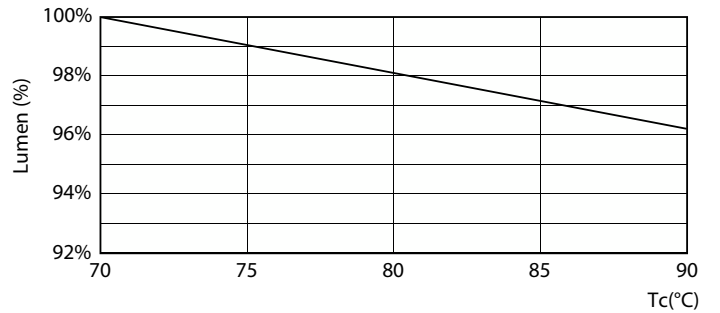
Lifetime



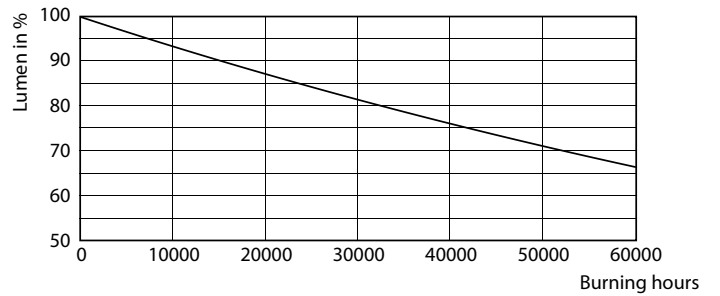
Life Expectancy Diagram



FailureRate



LumenVsTc



Lumen Maintenance Diagram

T8

Lifetime



LifetimeVsTc

