



T8

14.5T8/CNG/48-850/MF18/G 25/1

Philips MainsFit (UL Type B) Basic CorePro (BCP) T8 LED tubes deliver high-quality performance with a focus on affordability price. The UL Type B LED tubes are designed with easy installation and long-term maintenance simplicity in mind. Upgrade your lighting to Philips and realize 50,000 hour LED lifetime backed by a 5-year, full replacement limited warranty.

Product data

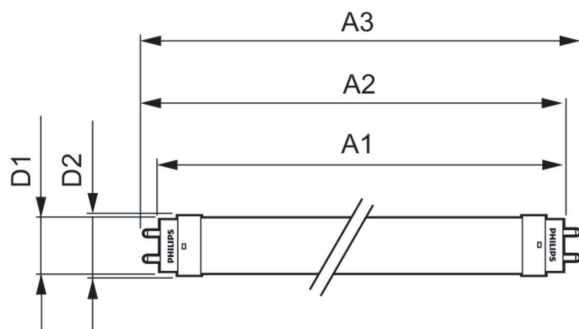
General information		Lamp Current (Min)	
Base	G13 [Medium Bi-Pin Fluorescent]		58 mA
EU RoHS compliant	Yes	Wattage Equivalent	32 W
Nominal Lifetime (Nom)	50000 h	Starting Time (Nom)	0.5 s
Switching Cycle	50000	Warm Up Time to 60% Light (Nom)	0.5 s
Tier	CorePro	UL Type	TLED_Type B; UL classified double end
		Power Factor (Nom)	0.9
		Voltage (Nom)	120-277 V
Light technical		Temperature	
Color Code	850 [CCT of 5000K]	T-Ambient (Max)	113 °F
Beam Angle (Nom)	240 °	T-Ambient (Min)	-4 °F
Initial lumen (Nom)	1800 lm	T-Storage (Max)	149 °F
Color Designation	Daylight	T-Storage (Min)	-40 °F
Correlated Color Temperature (Nom)	5000 K	T-Case Maximum (Nom)	158 °F
Luminous Efficacy (rated) (Nom)	124.00 lm/W		
Color Consistency	<5	Controls and dimming	
Color Rendering Index (Nom)	80	Dimmable	Limited
LLMF At End Of Nominal Lifetime (Nom)	70 %		
Operating and electrical		Mechanical and housing	
Input Frequency	50 to 60 Hz	Bulb Finish	Frosted
Power (Rated) (Nom)	14.5 W	Bulb Material	Glass
Lamp Current (Max)	125 mA	Product Length	47-1/4 in

T8

Bulb Shape	Tube, double-ended
Approval and application	
Energy Saving Product	Yes
Approbation Marks	RoHS compliance UL certificate DLC compliance
Product data	
Order product name	14.5T8/CNG/48-850/MF18/G 25/1

EAN/UPC - Product	046677577780
Order code	577783
Numerator - Quantity Per Pack	1
Numerator - Packs per outer box	25
Material Nr. (12NC)	929003474704
Net Weight (Piece)	0.419 lb
Model Number	9290034747

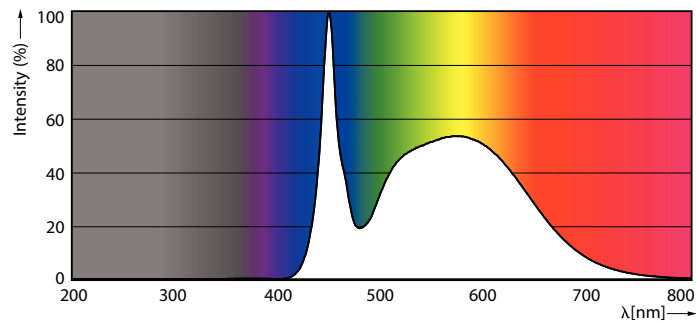
Dimensional drawing



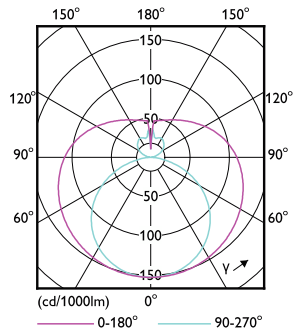
14.5T8/BCP/48-850/MF18/G 25/1

Product	D1	D2	A1	A2	A3
14.5T8/BCP/48-850/MF18/G 25/1	1-1/16 in	1-1/8 in	47-3/16 in	47-1/2 in	47-3/4 in

Photometric data

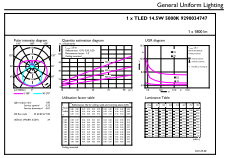


Spectral Power Distribution Colour



Light Distribution Diagram

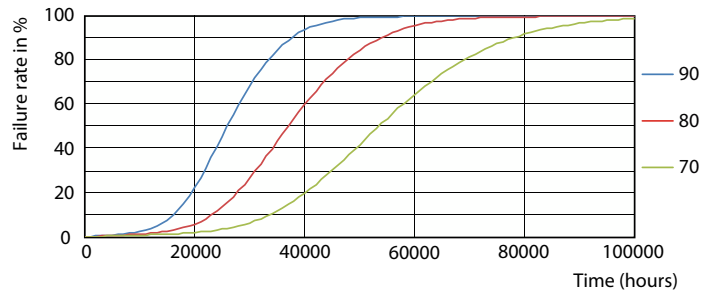
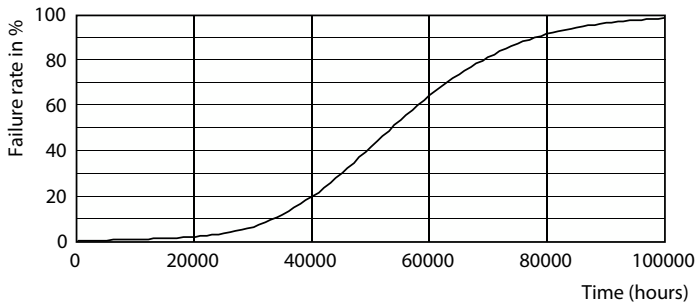
Photometric data



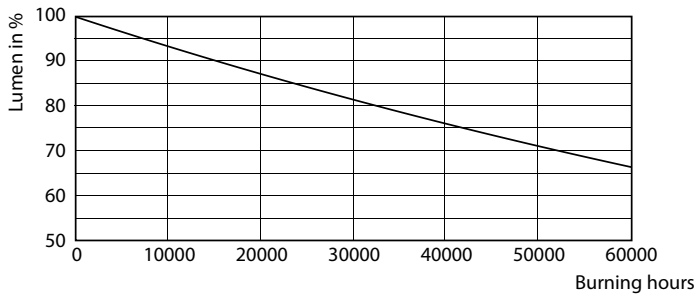
General uniform lighting

General uniform lighting

Lifetime

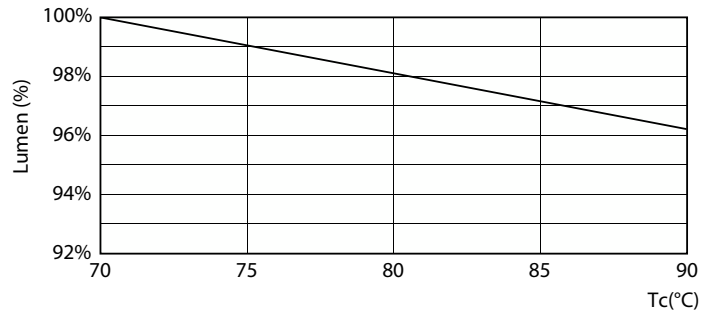


Life Expectancy Diagram



Lumen Maintenance Diagram

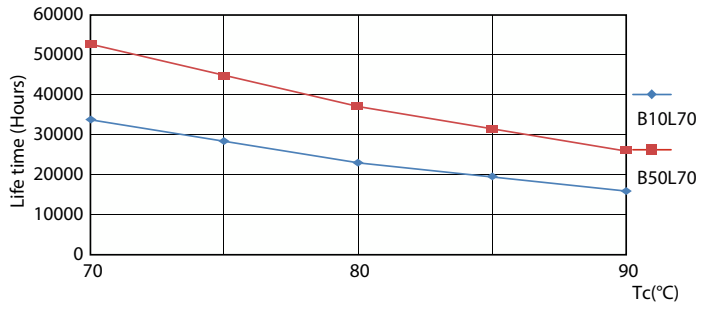
FailureRate



LumenVsTc

T8

Lifetime



LifetimeVsTc

