



# T8

## 14.5T8/CNG/48-840/MF18/G 25/1

Our TLEDs are available in InstantFit (Type A / Type C) or MainsFit (Ballast bypass / Type B) versions. The InstantFit lamps work on a broad variety of ballasts and LED drivers. Only InstantFit has over 15,000 lamp & ballast combinations delivering even light output, energy savings and a long lifetime. Our MainsFit products feature a double-ended design, simplifying installation while a proprietary safety circuit minimizes a shock risk. Lamp sizes range from 2-foot to 8-foot and U-bend with a variety of lumen outputs.

### Product data

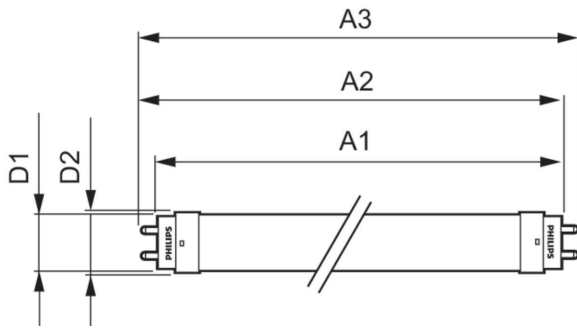
General Information		Operating and Electrical	
Cap-Base	G13 [Medium Bi-Pin Fluorescent]	Line Frequency	50 to 60 Hz
EU RoHS compliant	Yes	Input Frequency	50 to 60 Hz
Nominal lifetime	50,000 hour(s)	Power Consumption	14.5 W
Switching Cycle	50,000	Starting Time (Nom)	0.5 s
Lighting Technology	LED	Warm-up time to 60% light	0.5 s
Brand	Philips	Power Factor (Fraction)	0.9
		Voltage (Nom)	120-277 V
Light Technical		Temperature	
Color Code	840 [CCT of 4000K]	Ambient temperature range	-20 °C to 45 °C
Beam Angle (Nom)	240 degree(s)	T-Case Maximum (Nom)	158 °F
Luminous Flux	1,800 lumen		
Color Designation	Cool White (CW)	Controls and Dimming	
Correlated Color Temperature (Nom)	4000 K	Dimmable	Limited
Luminous Efficacy (rated) (Nom)	124.00 lm/W		
Color Consistency	<6	Mechanical and Housing	
Color rendering index (CRI)	80	Bulb Finish	Frosted
LLMF At End Of Nominal Lifetime (Nom)	70 %	Bulb Material	Glass
		Product Length	47-1/4 inch

# T8

<b>Bulb Shape</b>	Tube, double-ended
<b>Approval and Application</b>	
<b>Energy Saving Product</b>	Yes
<b>Approval Marks</b>	RoHS compliance UL certificate DLC compliance
<b>Product Data</b>	
<b>Order product name</b>	14.5T8/CNG/48-840/MF18/G 25/1

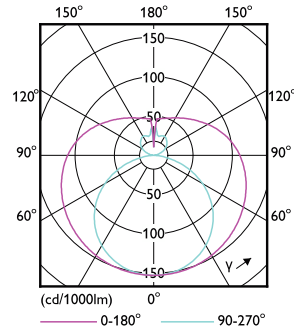
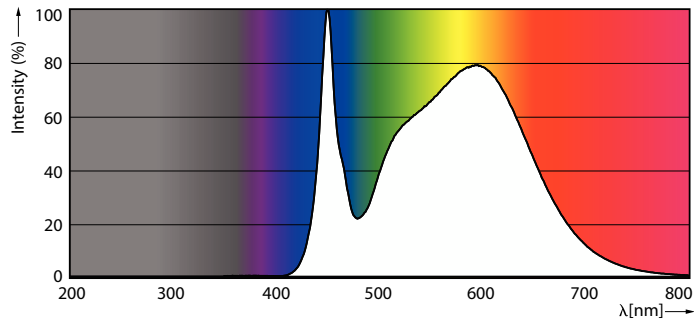
<b>Order code</b>	577775
<b>Numerator - Quantity Per Pack</b>	1
<b>Numerator - Packs per outer box</b>	25
<b>Material number (12NC)</b>	929003474604
<b>Net weight</b>	0.190 kg
<b>Full product name</b>	14.5T8/CNG/48-840/MF18/G 25/1
<b>EAN/UPC - Case</b>	5004667757778

## Dimensional drawing



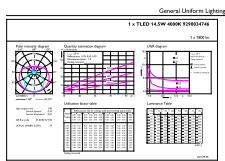
Product	D1	D2	A1	A2	A3
14.5T8/CNG/48-840/MF18/G 25/1	25.7 mm	28 mm	1,198.2 mm	1,205.3 mm	1,212.4 mm

## Photometric data

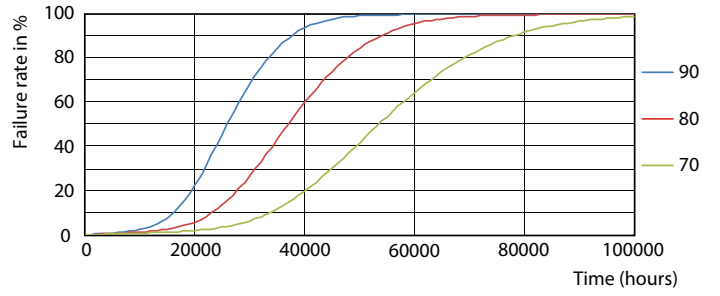
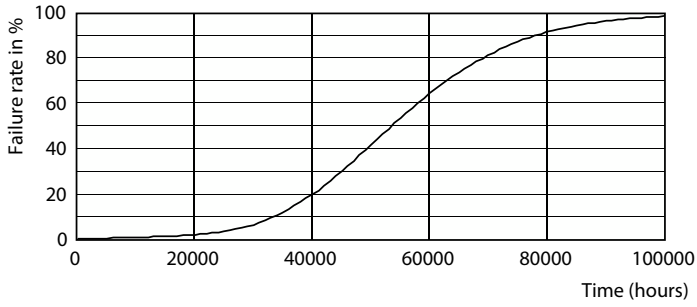


Spectral Power Distribution Colour - 14.5T8/CNG/48-840/MF18/G 25/1

Light Distribution Diagram - 14.5T8/CNG/48-840/MF18/G 25/1

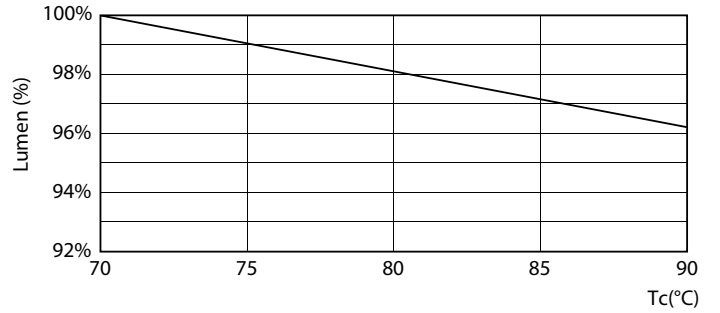
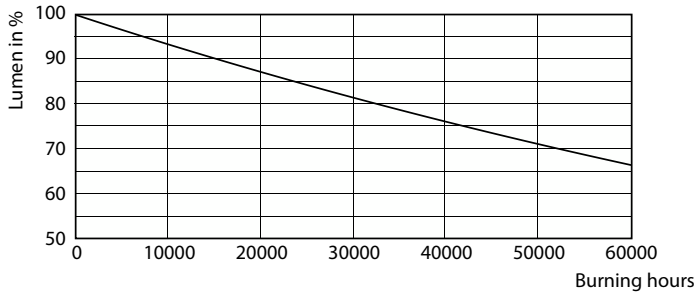


Lifetime



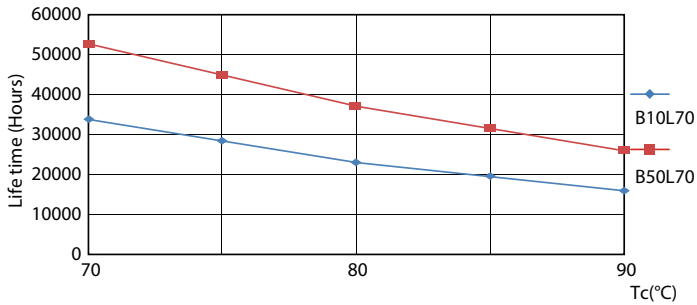
Life Expectancy Diagram - 14.5T8/CNG/48-840/MF18/G 25/1

Life Expectancy Diagram - 14.5T8/CNG/48-840/MF18/G 25/1



Lumen Maintenance Diagram - 14.5T8/CNG/48-840/MF18/G 25/1

Lumen Maintenance Diagram - 14.5T8/CNG/48-840/MF18/G 25/1



Life Expectancy Diagram - 14.5T8/CNG/48-840/MF18/G 25/1

