

# T8

## 14T8/COR/48-840/IF22/G/DIM/BAA 25/1

Philips is proud to offer BAA (Buy American Act) compliant InstantFit (UL Type A/ Ballast compatible) T8 LED lamps. This product is proudly manufactured in the USA and is BAA (Buy American Act) compliant. This product can replace either T8 or T12 lamps in fixtures containing shunted or non-shunted G13 (medium bi-pin) lamp holders. The 4ft lamps are available in two lumen packages and three CCT options.

### Product data

General information	
Base	G13 [ Medium Bi-Pin Fluorescent]
EU RoHS compliant	Yes
Nominal Lifetime (Nom)	50000 h
Switching Cycle	50000X
Light technical	
Color Code	841 [ CCT of 4100K (841)]
Beam Angle (Nom)	240 °
Initial lumen (Nom)	2200 lm
Color Designation	Cool White (CW)
Correlated Color Temperature (Nom)	4000 K
Luminous Efficacy (rated) (Nom)	157.00 lm/W
Color Consistency	<6
Color Rendering Index (Nom)	80
LLMF At End Of Nominal Lifetime (Nom)	70 %
Operating and electrical	
Input Frequency	20K to 120K Hz
Power (Rated) (Nom)	14 W
Lamp Current (Max)	400 mA
Lamp Current (Min)	100 mA

Wattage Equivalent	32-30-28-25 W
Starting Time (Nom)	0.5 s
Warm Up Time to 60% Light (Nom)	0.5 s
UL Type	TLED_Type A; UL listed HF
Power Factor (Nom)	0.9
Voltage (Nom)	120-277, 347 V

Temperature	
T-Ambient (Max)	45 °C
T-Ambient (Min)	-20 °C
T-Storage (Max)	65 °C
T-Storage (Min)	-40 °C
T-Case Maximum (Nom)	50 °C

Controls and dimming	
Dimmable	Only with specific dimmers

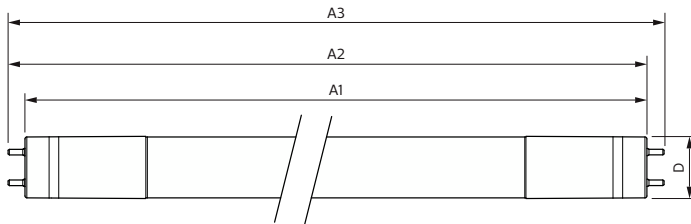
Mechanical and housing	
Bulb Finish	Frosted
Bulb Material	Glass
Product Length	48 in

# T8

<b>Bulb Shape</b>	Tube, double-ended
<b>Approval and application</b>	
<b>Energy Saving Product</b>	Yes
<b>Approbation Marks</b>	RoHS compliance UL certificate DLC compliance
<b>Product data</b>	
<b>Order product name</b>	14T8/COR/48-840/IF22/G/DIM/BAA 25/1

<b>EAN/UPC - Product</b>	046677576813
<b>Order code</b>	576819
<b>Numerator - Quantity Per Pack</b>	1
<b>Numerator - Packs per outer box</b>	25
<b>Material Nr. (12NC)</b>	929003144904
<b>Net Weight (Piece)</b>	0.206 kg
<b>Model Number</b>	9290031449

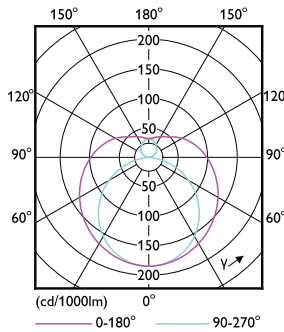
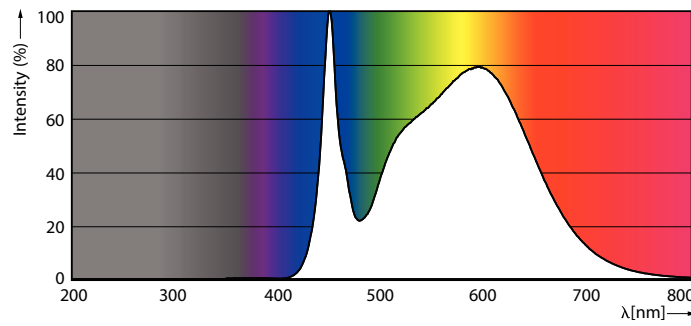
## Dimensional drawing



Product	D1	D2	A1	A2	A3
14T8/COR/48-840/ IF22/G/DIM/BAA 25/1	25.7 mm	25.7 mm	1198.2 mm	1205.3 mm	1212.4 mm

14T8/COR/48-840/IF22/G/DIM/BAA 25/1

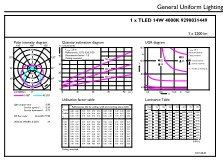
## Photometric data



LEDtube COR NAM 10,5W G13 1650lm 840-POC

LEDtube COR NAM 14W G13 2100lm-LDD

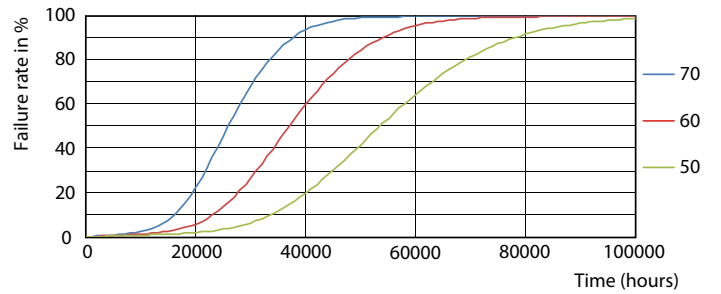
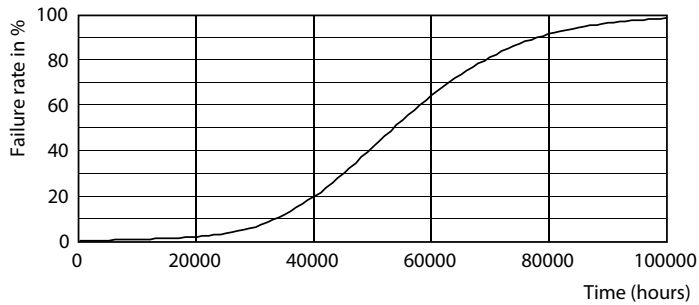
Photometric data



© 2022 Philips Lighting B.V. Page 10 of 11

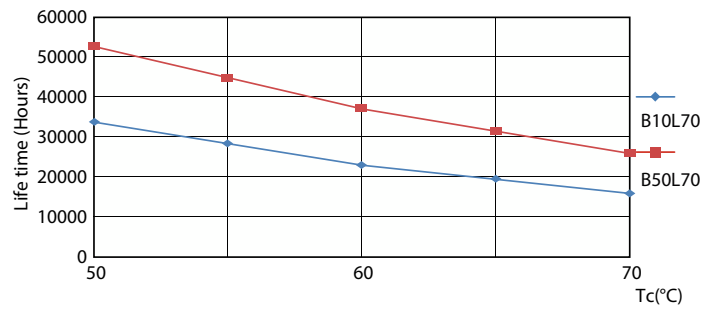
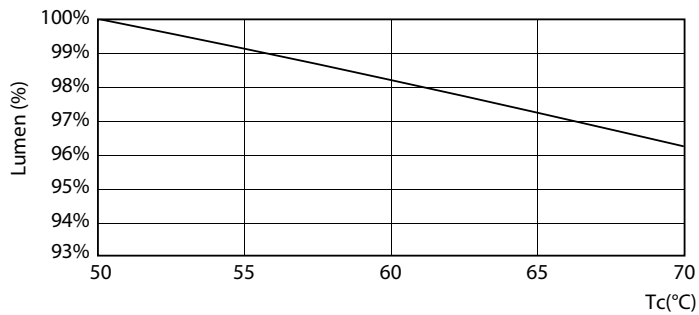
LEDtube COR NAM 14W G13 2200lm 840-GUL

Lifetime



LEDtube 50K-LED

LEDtube 50K 5070 FailureRate-LED

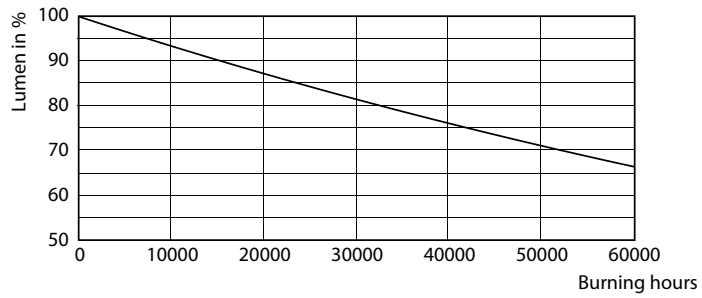


LEDtube COR NAM 14W 50K LumenVsTc-LMP

LEDtube 50K 5070 LifetimeVsTc-LED

# T8

## Lifetime



LEDtube 50K-LMP

