



T8

10.5T8/COR/48-850/IF16/G/DIM/BAA 25/1

Philips is proud to offer BAA (Buy American Act) compliant InstantFit (UL Type A/ Ballast compatible) T8 LED lamps. This product is proudly manufactured in the USA and is BAA (Buy American Act) compliant. This product can replace either T8 or T12 lamps in fixtures containing shunted or non-shunted G13 (medium bi-pin) lamp holders. The 4ft lamps are available in two lumen packages and three CCT options.

Product data

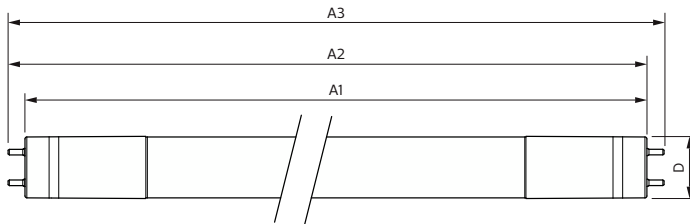
General information		Wattage Equivalent	
Base	G13 [Medium Bi-Pin Fluorescent]		32-30-28-25 W
EU RoHS compliant	Yes	Starting Time (Nom)	0.5 s
Nominal Lifetime (Nom)	50000 h	Warm Up Time to 60% Light (Nom)	0.5 s
Switching Cycle	50000X	UL Type	TLED_Type A; UL listed HF
		Power Factor (Nom)	0.9
		Voltage (Nom)	120-277, 347 V
Light technical		Temperature	
Color Code	850 [CCT of 5000K]	T-Ambient (Max)	45 °C
Beam Angle (Nom)	240 °	T-Ambient (Min)	-20 °C
Initial lumen (Nom)	1650 lm	T-Storage (Max)	65 °C
Color Designation	Daylight	T-Storage (Min)	-40 °C
Correlated Color Temperature (Nom)	5000 K	T-Case Maximum (Nom)	50 °C
Luminous Efficacy (rated) (Nom)	157.00 lm/W		
Color Consistency	<5	Controls and dimming	
Color Rendering Index (Nom)	80	Dimmable	Only with specific dimmers
LLMF At End Of Nominal Lifetime (Nom)	70 %		
Operating and electrical		Mechanical and housing	
Input Frequency	20K to 120K Hz	Bulb Finish	Frosted
Power (Rated) (Nom)	10.5 W	Bulb Material	Glass
Lamp Current (Max)	350 mA	Product Length	48 in
Lamp Current (Min)	90 mA		

T8

Bulb Shape	Tube, double-ended
Approval and application	
Energy Saving Product	Yes
Approbation Marks	RoHS compliance UL certificate DLC compliance
Product data	
Order product name	10.5T8/COR/48-850/IF16/G/DIM/BAA 25/1

EAN/UPC - Product	046677576790
Order code	576793
Numerator - Quantity Per Pack	1
Numerator - Packs per outer box	25
Material Nr. (12NC)	929003144704
Net Weight (Piece)	0.206 kg
Model Number	9290031447

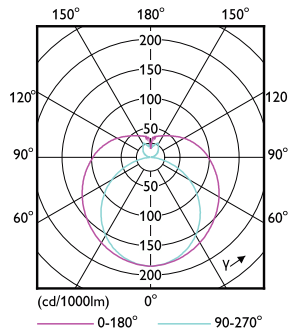
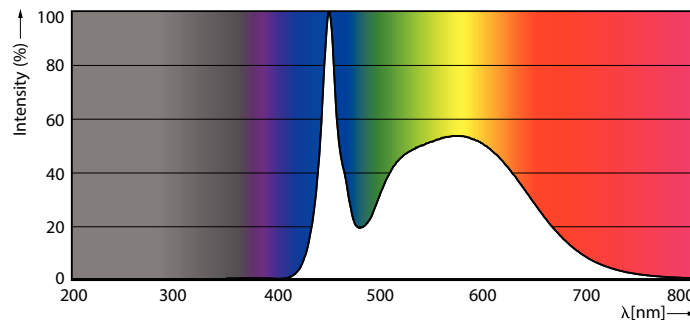
Dimensional drawing



Product	D1	D2	A1	A2	A3
10.5T8/COR/48-850/IF16/G/DIM/BAA 25/1	25.7 mm	25.7 mm	1198.2 mm	1205.3 mm	1212.4 mm

10.5T8/COR/48-850/IF16/G/DIM/BAA 25/1

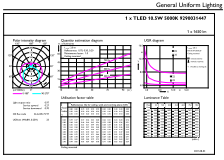
Photometric data



LEDtube COR NAM 10,5W G13 1650lm 850-POC

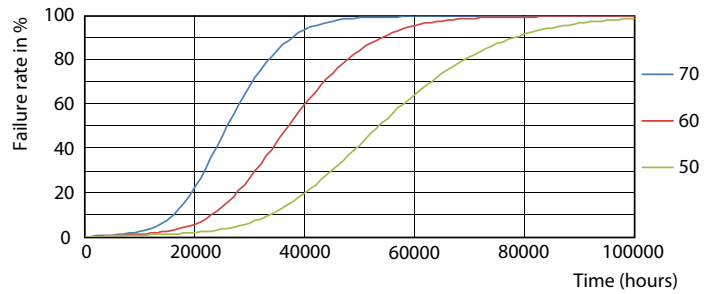
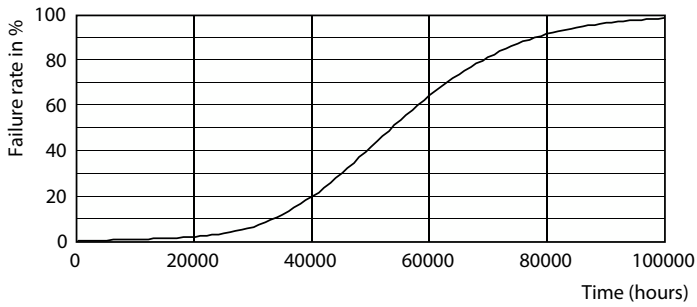
LEDtube COR NAM 10,5W G13 1550lm-LDD

Photometric data



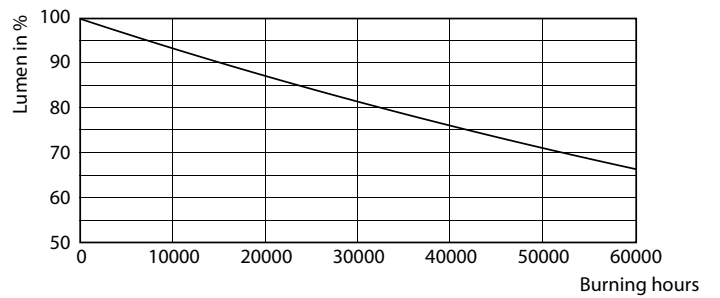
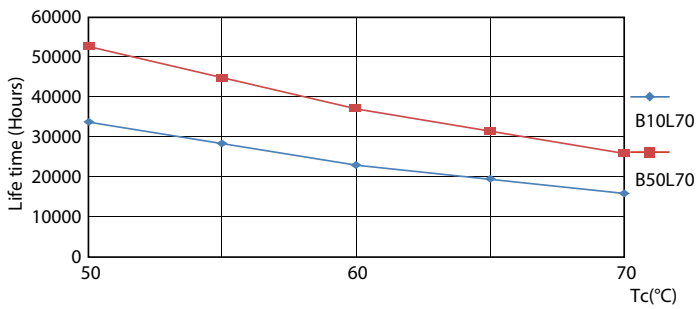
LEDtube COR NAM 10,5W G13 1650lm 850-GUL

Lifetime



LEDtube 50K-LED

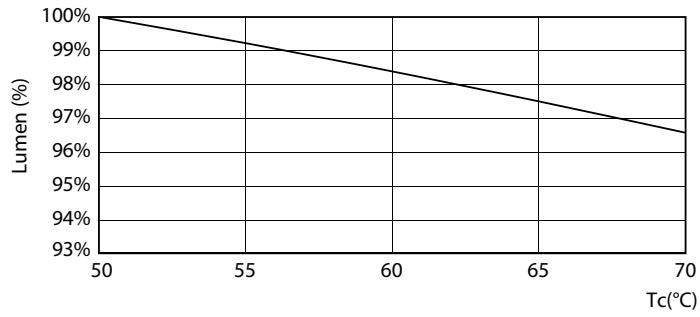
LEDtube 50K 5070 FailureRate-LED



LEDtube 50K 5070 LifetimeVsTc-LED

LEDtube 50K-LMP

Lifetime



LEDtube COR NAM 10,5W 50K LumenVsTc-LMP

