



T8

10.5T8/COR/48-835/IF15/G/DIM/BAA 25/1

Philips is proud to offer BAA (Buy American Act) compliant InstantFit (UL Type A/ Ballast compatible) T8 LED lamps. This product is proudly manufactured in the USA and is BAA (Buy American Act) compliant. This product can replace either T8 or T12 lamps in fixtures containing shunted or non-shunted G13 (medium bi-pin) lamp holders. The 4ft lamps are available in two lumen packages and three CCT options.

Product data

| General information | |
|---------------------------------------|----------------------------------|
| Base | G13 [Medium Bi-Pin Fluorescent] |
| EU RoHS compliant | Yes |
| Nominal Lifetime (Nom) | 50000 h |
| Switching Cycle | 50000X |
| Light technical | |
| Color Code | 835 [CCT of 3500K] |
| Beam Angle (Nom) | 240 ° |
| Initial lumen (Nom) | 1550 lm |
| Color Designation | White (WH) |
| Correlated Color Temperature (Nom) | 3500 K |
| Luminous Efficacy (rated) (Nom) | 147.00 lm/W |
| Color Consistency | <6 |
| Color Rendering Index (Nom) | 80 |
| LLMF At End Of Nominal Lifetime (Nom) | 70 % |
| Operating and electrical | |
| Input Frequency | 20K to 120K Hz |
| Power (Rated) (Nom) | 10.5 W |
| Lamp Current (Max) | 350 mA |
| Lamp Current (Min) | 90 mA |

| | |
|---------------------------------|---------------------------|
| Wattage Equivalent | 32-30-28-25 W |
| Starting Time (Nom) | 0.5 s |
| Warm Up Time to 60% Light (Nom) | 0.5 s |
| UL Type | TLED_Type A; UL listed HF |
| Power Factor (Nom) | 0.9 |
| Voltage (Nom) | 120-277, 347 V |

| Temperature | |
|----------------------|--------|
| T-Ambient (Max) | 45 °C |
| T-Ambient (Min) | -20 °C |
| T-Storage (Max) | 65 °C |
| T-Storage (Min) | -40 °C |
| T-Case Maximum (Nom) | 50 °C |

| Controls and dimming | |
|----------------------|----------------------------|
| Dimmable | Only with specific dimmers |

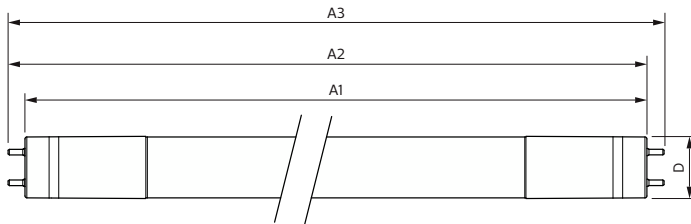
| Mechanical and housing | |
|------------------------|---------|
| Bulb Finish | Frosted |
| Bulb Material | Glass |
| Product Length | 48 in |

T8

| | |
|---------------------------------|---|
| Bulb Shape | Tube, double-ended |
| Approval and application | |
| Energy Saving Product | Yes |
| Approbation Marks | RoHS compliance UL certificate DLC compliance |
| Product data | |
| Order product name | 10.5T8/COR/48-835/IF15/G/DIM/BAA 25/1 |

| | |
|--|--------------|
| EAN/UPC - Product | 046677576776 |
| Order code | 576777 |
| Numerator - Quantity Per Pack | 1 |
| Numerator - Packs per outer box | 25 |
| Material Nr. (12NC) | 929003144504 |
| Net Weight (Piece) | 0.206 kg |
| Model Number | 9290031445 |

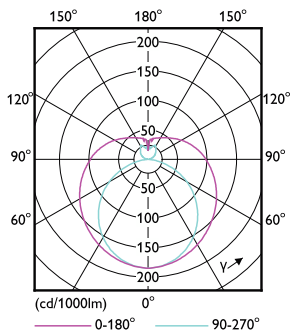
Dimensional drawing



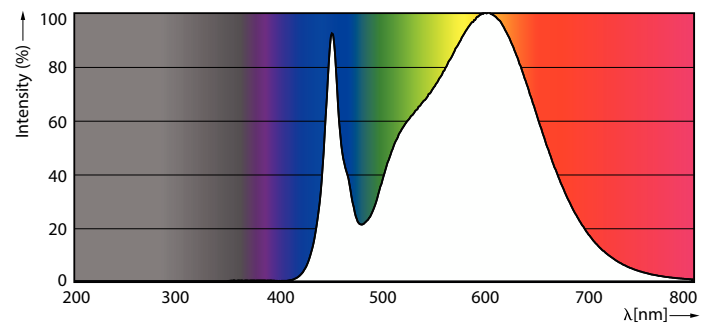
| Product | D1 | D2 | A1 | A2 | A3 |
|---------------------------------------|---------|---------|-----------|-----------|-----------|
| 10.5T8/COR/48-835/IF15/G/DIM/BAA 25/1 | 25.7 mm | 25.7 mm | 1198.2 mm | 1205.3 mm | 1212.4 mm |

10.5T8/COR/48-835/IF15/G/DIM/BAA 25/1

Photometric data

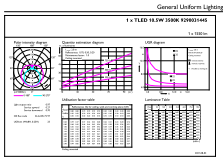


LEDtube COR NAM 10,5W G13 1550lm-LDD



LEDtube COR NAM 10,5W G13 1550lm 835-POC

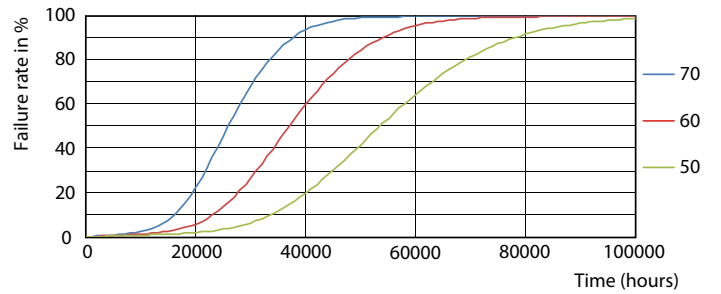
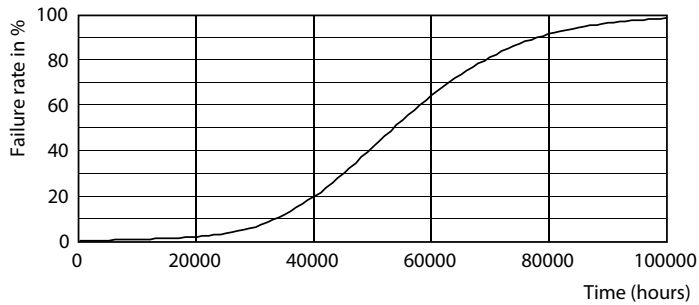
Photometric data



© 2022 Philips Lighting B.V. Page 11

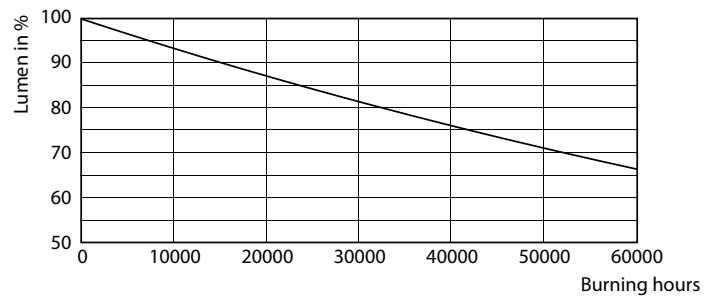
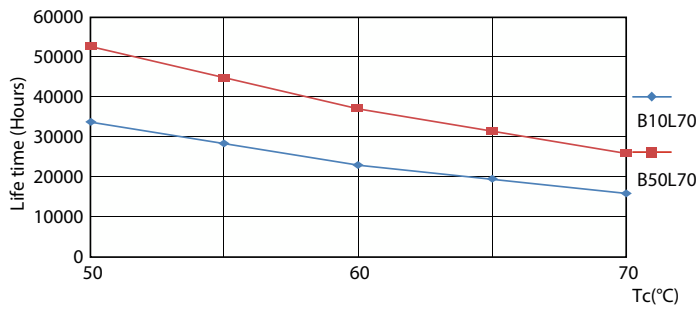
LEDtube COR NAM 10,5W G13 1550lm 835-GUL

Lifetime



LEDtube 50K-LED

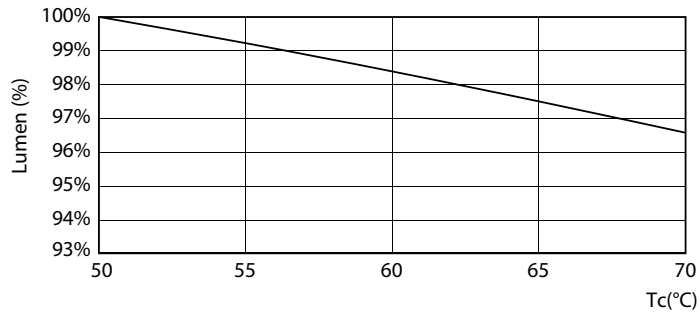
LEDtube 50K 5070 FailureRate-LED



LEDtube 50K 5070 LifetimeVsTc-LED

LEDtube 50K-LMP

Lifetime



LEDtube COR NAM 10,5W 50K LumenVsTc-LMP

