

# T5

## 24T5HO/COR/46-850/IF35/G/DIM 25/1

Philips T5 LED tubes offer an affordable, energy saving retrofit solution. The T5 lamps have been engineered to withstand the test of time with a 50,000-hour lifetime and a limited 5-year warranty to back it up. The lighting performance effectively replaces conventional fluorescent T5 HO or T5 HE lamps. Available in either InstantFit (Type A or Type C) or MainsFit (Type B / Ballast bypass), Philips T5 TLEDs provide a variety of options for any application.

### Product data

General Information	
Cap-Base	G5 [G5]
EU RoHS compliant	Yes
Nominal lifetime	50,000 hour(s)
Switching Cycle	50,000
Lighting Technology	LED
Brand	Philips
Light Technical	
Color Code	850 [CCT of 5000K]
Beam Angle (Nom)	200 degree(s)
Luminous Flux	3,500 lumen
Color Designation	Daylight
Correlated Color Temperature (Nom)	5000 K
Luminous Efficacy (rated) (Nom)	145.00 lm/W
Color Consistency	<5
Color rendering index (CRI)	80
LLMF At End Of Nominal Lifetime (Nom)	70 %
Operating and Electrical	
Line Frequency	50 to 60 Hz

Input Frequency	50 to 60 Hz
Power Consumption	24 W
Starting Time (Nom)	0.5 s
Warm-up time to 60% light	0.5 s
Power Factor (Fraction)	0.9
Voltage (Nom)	120-277, 347 V

Temperature	
Ambient temperature range	-20 °C to 45 °C
T-Case Maximum (Nom)	158 °F

Controls and Dimming	
Dimmable	Only with specific dimmers

Mechanical and Housing	
Bulb Finish	Frosted
Bulb Material	Glass
Product Length	47-1/4 inch
Bulb Shape	Tube, double-ended

**Approval and Application**

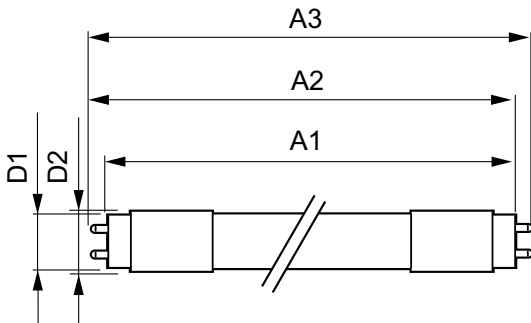
Energy Saving Product	Yes
Approval Marks	RoHS compliance UL certificate DLC compliance

**Product Data**

Order product name	24T5HO/COR/46-850/IF35/G/DIM 25/1
Order code	576744

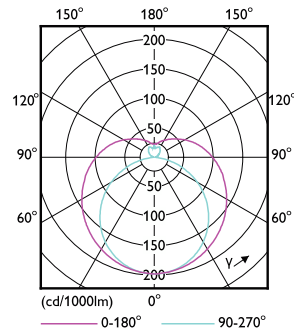
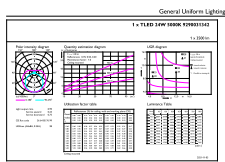
Numerator - Quantity Per Pack	1
Numerator - Packs per outer box	25
Material number (12NC)	929003134204
Net weight	0.151 kg
Full product name	24T5HO/COR/46-850/IF35/G/DIM 25/1
EAN/UPC - Case	50046677576740

**Dimensional drawing**

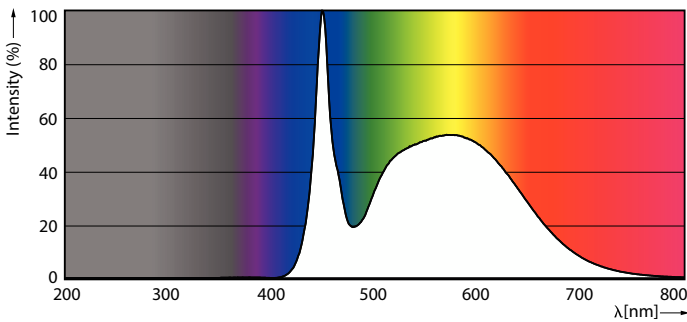


Product	D1	D2	A1	A2	A3
24T5HO/COR/46-850/IF35/G/DIM 25/1	15.3 mm	18.4 mm	1,147.8 mm	1,154.9 mm	1,162 mm

**Photometric data**

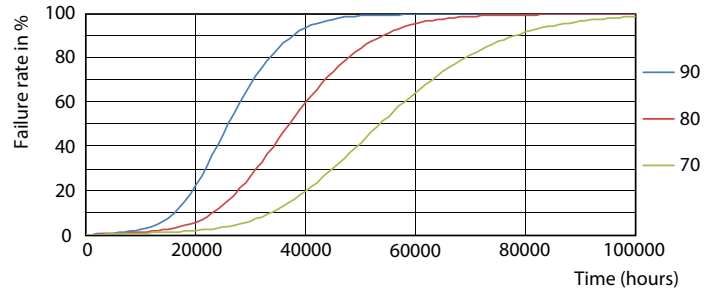
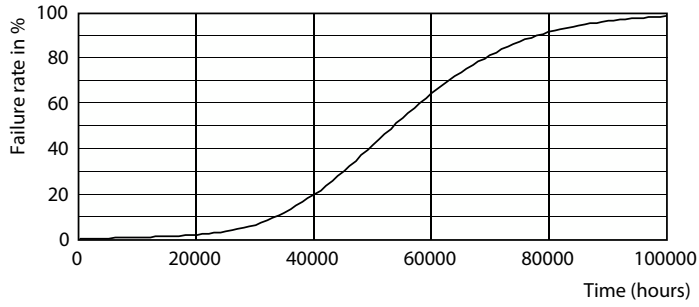


Light Distribution Diagram - 24T5HO/COR/46-850/IF35/G/DIM 25/1



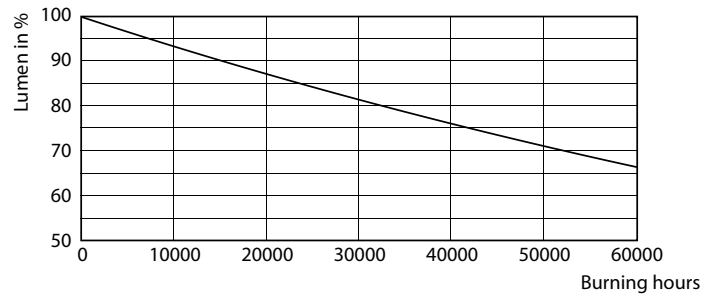
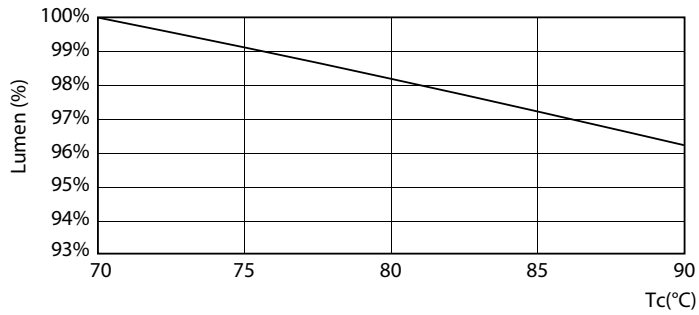
Spectral Power Distribution Colour - 24T5HO/COR/46-850/IF35/G/DIM 25/1

Lifetime



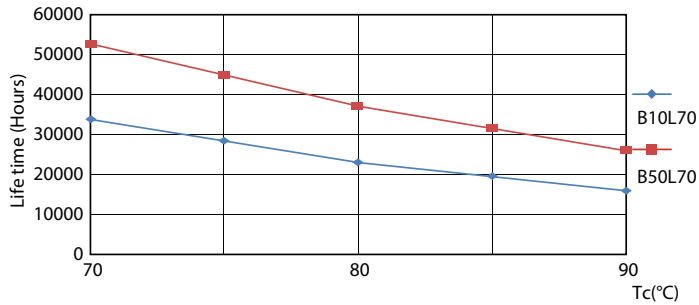
Life Expectancy Diagram - 24T5HO/COR/46-850/IF35/G/DIM 25/1

Life Expectancy Diagram - 24T5HO/COR/46-850/IF35/G/DIM 25/1



Lumen Maintenance Diagram - 24T5HO/COR/46-850/IF35/G/DIM 25/1

Lumen Maintenance Diagram - 24T5HO/COR/46-850/IF35/G/DIM 25/1



Life Expectancy Diagram - 24T5HO/COR/46-850/IF35/G/DIM 25/1

