

# T5

## 14T5HE/COR/46-835/MF20/G 25/1

Philips MainsFit (Type B) T5 LED tubes offer an affordable, energy saving retrofit solution to replace fluorescent T5 HE lamps. The double-ended design makes for a quick and simple installation. Our lamps have been engineered to withstand the test of time with a 50,000-hour lifetime and a limited 5-year warranty to back it up.

### Product data

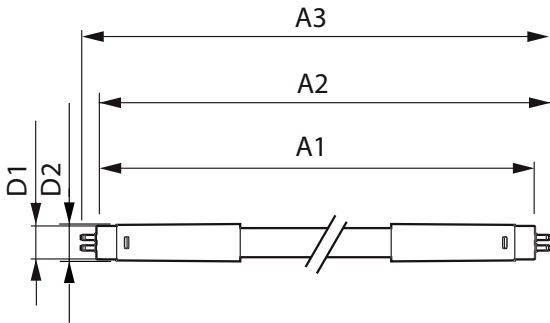
General Information		Warm Up Time to 60% Light (Nom)	
Base	G5 [ G5]		0.5 s
EU RoHS compliant	Yes	UL Type	TLED_Type B; UL classified double end
Nominal Lifetime (Nom)	50000 h	Power Factor (Nom)	0.9
Switching Cycle	50000X	Voltage (Nom)	120-277 V
Light Technical		Temperature	
Color Code	835 [ CCT of 3500K]	T-Ambient (Max)	45 °C
Beam Angle (Nom)	200 °	T-Ambient (Min)	-20 °C
Initial lumen (Nom)	2000 lm	T-Storage (Max)	65 °C
Color Designation	White (WH)	T-Storage (Min)	-40 °C
Correlated Color Temperature (Nom)	3500 K	T-Case Maximum (Nom)	70 °C
Luminous Efficacy (rated) (Nom)	142.00 lm/W	Controls and Dimming	
Color Consistency	<6	Dimmable	Limited
Color Rendering Index (Nom)	80	Mechanical and Housing	
LLMF At End Of Nominal Lifetime (Nom)	70 %	Bulb Finish	Frosted
Operating and Electrical		Bulb Material	Glass
Input Frequency	50 to 60 Hz	Product Length	48 in
Power (Rated) (Nom)	14 W	Bulb Shape	Tube, double-ended
Lamp Current (Max)	145 mA	Approval and Application	
Lamp Current (Min)	55 mA	Energy Saving Product	Yes
Starting Time (Nom)	0.5 s		

# T5

<b>Approbation Marks</b>	RoHS compliance UL certificate DLC compliance
<b>Product Data</b>	
<b>Order product name</b>	14T5HE/COR/46-835/MF20/G 25/1
<b>EAN/UPC - Product</b>	046677576202
<b>Order code</b>	576207

<b>Numerator - Quantity Per Pack</b>	1
<b>Numerator - Packs per outer box</b>	25
<b>Material Nr. (12NC)</b>	929003123304
<b>Net Weight (Piece)</b>	0.151 kg
<b>Model Number</b>	9290031233

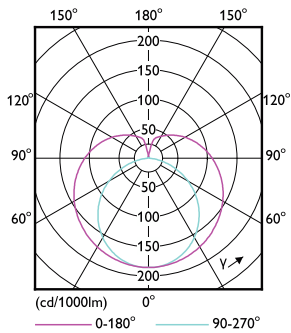
## Dimensional drawing



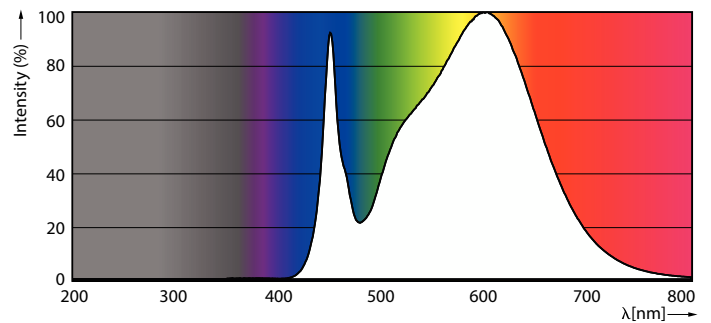
TLED T8 120-277V 14-28W 2000lm 3500K G5

<b>Product</b>	14T5HE/COR/46-835/MF20/G 25/1
----------------	-------------------------------

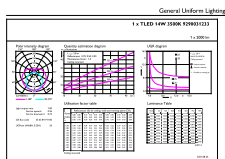
## Photometric data



LEDtube COR NAM1 8W G5 1000lm-LDD



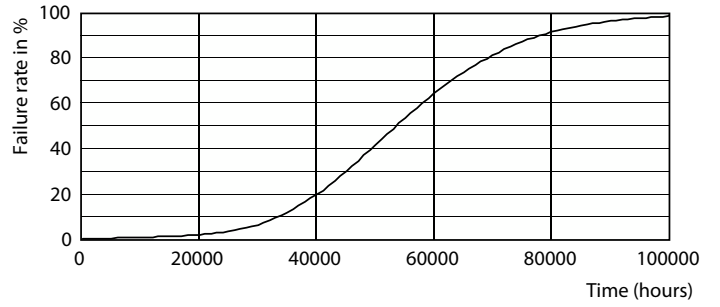
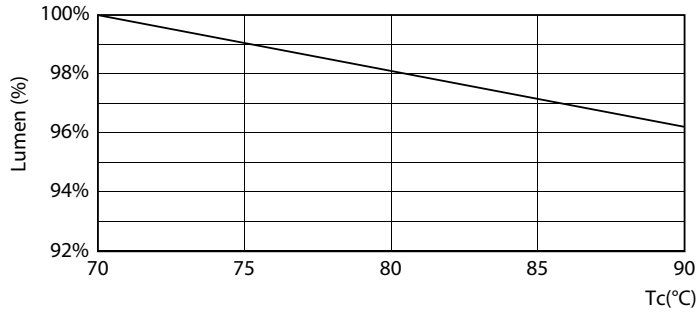
LEDtube COR NAM1 8W G5 1000lm 835-POC



© 2021 Philips Lighting B.V. All rights reserved.

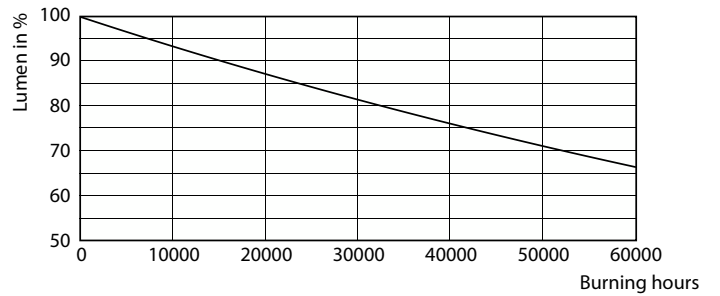
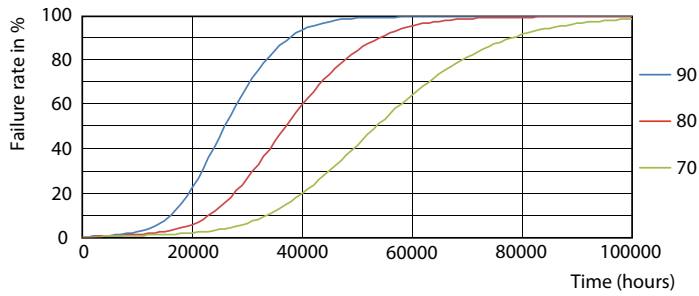
LEDtube COR NAM1 14W G5 2000lm 835-GUL

Lifetime



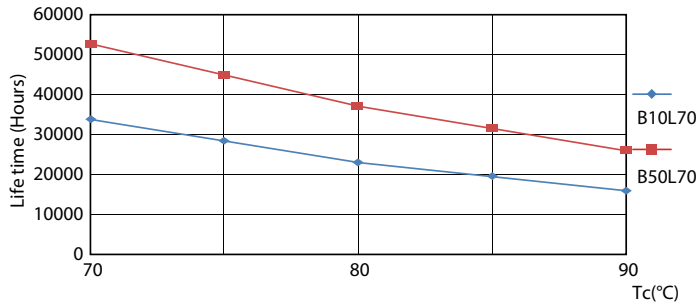
LEDtube COR NAM1 8W 50K LumenVsTc-LMP

LEDtube 50K-LED



LEDtube 50K 7090 FailureRate-LED

LEDtube 50K-LMP



LEDtube 50K 7090 LifetimeVsTc-LED

