

T5

10T5HE/COR/34-840/MF14/G 25/1

Philips MainsFit (Type B) T5 LED tubes offer an affordable, energy saving retrofit solution to replace fluorescent T5 HE lamps. The double-ended design makes for a quick and simple installation. Our lamps have been engineered to withstand the test of time with a 50,000-hour lifetime and a limited 5-year warranty to back it up.

Product data

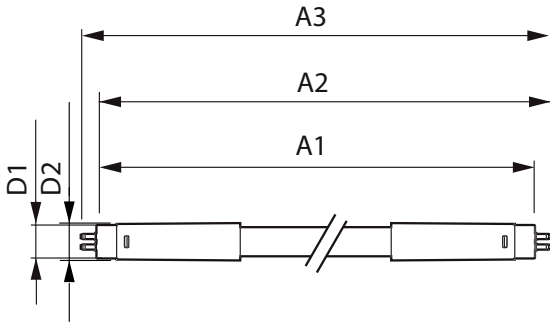
General Information		Warm Up Time to 60% Light (Nom)	
Base	G5 [G5]		0.5 s
EU RoHS compliant	Yes	UL Type	TLED_Type B; UL classified double end
Nominal Lifetime (Nom)	50000 h	Power Factor (Nom)	0.9
Switching Cycle	50000X	Voltage (Nom)	120-277 V
Light Technical		Temperature	
Color Code	841 [CCT of 4100K (841)]	T-Ambient (Max)	45 °C
Beam Angle (Nom)	200 °	T-Ambient (Min)	-20 °C
Initial lumen (Nom)	1400 lm	T-Storage (Max)	65 °C
Color Designation	Cool White (CW)	T-Storage (Min)	-40 °C
Correlated Color Temperature (Nom)	4000 K	T-Case Maximum (Nom)	70 °C
Luminous Efficacy (rated) (Nom)	140.00 lm/W	Controls and Dimming	
Color Consistency	<6	Dimmable	Limited
Color Rendering Index (Nom)	80	Mechanical and Housing	
LLMF At End Of Nominal Lifetime (Nom)	70 %	Bulb Finish	Frosted
		Bulb Material	Glass
Operating and Electrical		Product Length	36 in
Input Frequency	50 to 60 Hz	Bulb Shape	Tube, double-ended
Power (Rated) (Nom)	10 W	Approval and Application	
Lamp Current (Max)	105 mA	Energy Saving Product	Yes
Lamp Current (Min)	40 mA		
Starting Time (Nom)	0.5 s		

T5

Approbation Marks	RoHS compliance UL certificate
Product Data	
Order product name	10T5HE/COR/34-840/MF14/G 25/1
EAN/UPC - Product	046677576189
Order code	576181
Numerator - Quantity Per Pack	1

Numerator - Packs per outer box	25
Material Nr. (12NC)	929003123104
Net Weight (Piece)	0.125 kg
Model Number	9290031231

Dimensional drawing

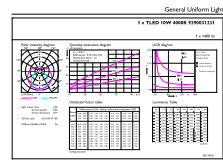
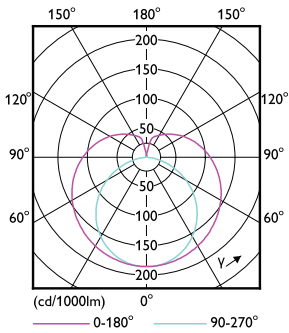


TLED T8 120-277V 10-21W 1400lm 4000K G5

Product

10T5HE/COR/34-840/MF14/G 25/1

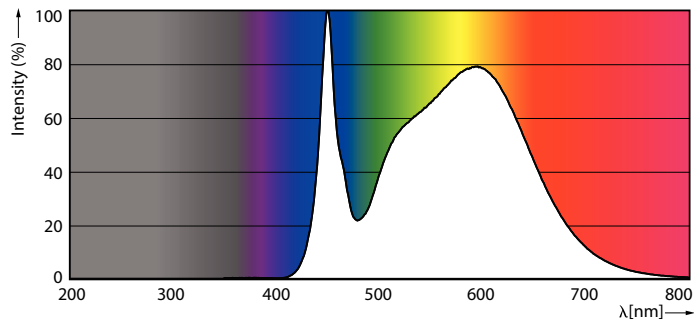
Photometric data



©2021 Philips Lighting B.V. All rights reserved. Page 1/1

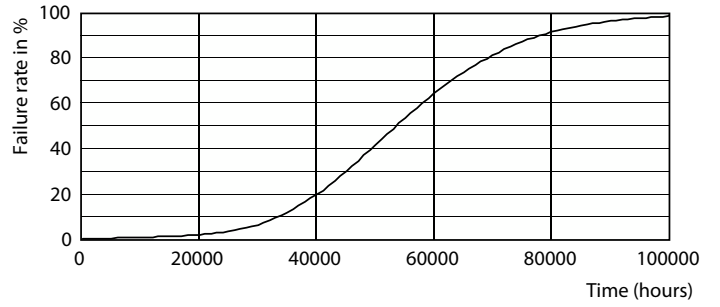
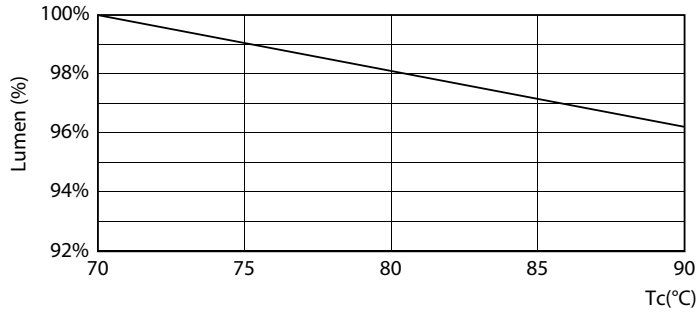
LEDtube COR NAM1 8W G5 1000lm-LDD

LEDtube COR NAM1 10W G5 1400lm 840-GUL



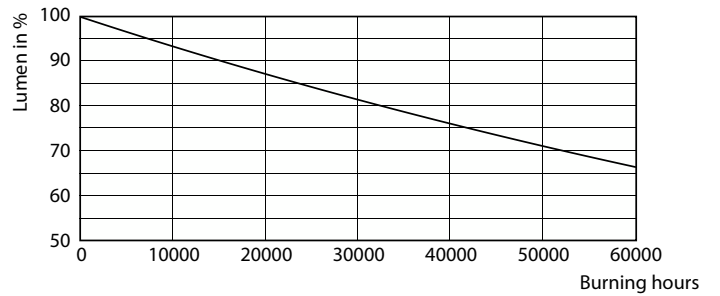
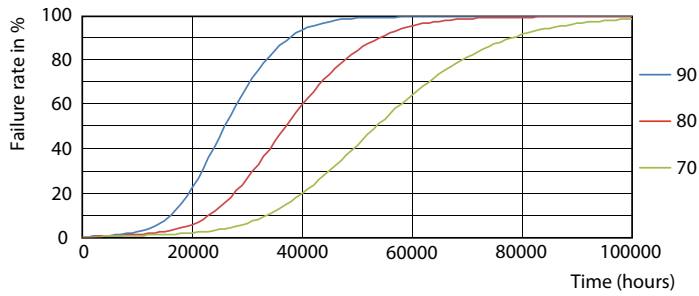
LEDtube COR NAM1 8W G5 1050lm 840-POC

Lifetime



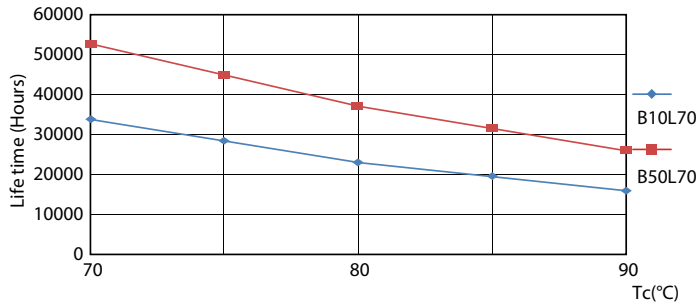
LEDtube COR NAM1 8W 50K LumenVsTc-LMP

LEDtube 50K-LED



LEDtube 50K 7090 FailureRate-LED

LEDtube 50K-LMP



LEDtube 50K 7090 LifetimeVsTc-LED

