

T5

10T5HE/COR/34-835/MF13/G 25/1

Philips MainsFit (Type B) T5 LED tubes offer an affordable, energy saving retrofit solution to replace fluorescent T5 HE lamps. The double-ended design makes for a quick and simple installation. Our lamps have been engineered to withstand the test of time with a 50,000-hour lifetime and a limited 5-year warranty to back it up.

Product data

General information		Wattage Equivalent	
Base	G5 [G5]		21 W
EU RoHS compliant	Yes	Starting Time (Nom)	0.5 s
Nominal Lifetime (Nom)	50000 h	Warm Up Time to 60% Light (Nom)	0.5 s
Switching Cycle	50000	UL Type	TLED_Type B; UL classified double end
Tier	CorePro	Power Factor (Nom)	0.9
		Voltage (Nom)	120-277 V
Light technical		Temperature	
Color Code	835 [CCT of 3500K]	T-Ambient (Max)	113 °F
Beam Angle (Nom)	200 °	T-Ambient (Min)	-4 °F
Initial lumen (Nom)	1300 lm	T-Storage (Max)	149 °F
Color Designation	White (WH)	T-Storage (Min)	-40 °F
Correlated Color Temperature (Nom)	3500 K	T-Case Maximum (Nom)	158 °F
Luminous Efficacy (rated) (Nom)	130.00 lm/W		
Color Consistency	<6	Controls and dimming	
Color Rendering Index (Nom)	80	Dimmable	Limited
LLMF At End Of Nominal Lifetime (Nom)	70 %		
Operating and electrical		Mechanical and housing	
Input Frequency	50 to 60 Hz	Bulb Finish	Frosted
Power (Rated) (Nom)	10 W	Bulb Material	Glass
Lamp Current (Max)	105 mA	Product Length	35-7/16 in
Lamp Current (Min)	40 mA	Bulb Shape	Tube, double-ended

T5

Approval and application

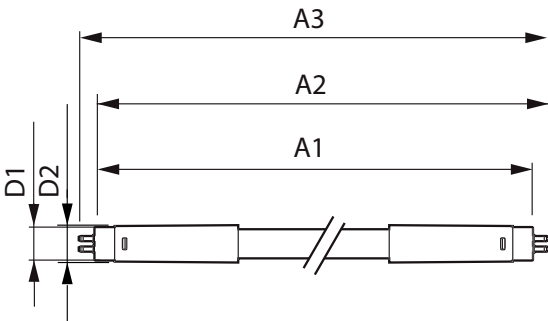
Energy Saving Product	Yes
Approbation Marks	RoHS compliance UL certificate

Product data

Order product name	10T5HE/COR/34-835/MF13/G 25/1
EAN/UPC - Product	046677576172
Order code	576173

Numerator - Quantity Per Pack	1
Numerator - Packs per outer box	25
Material Nr. (12NC)	929003123004
Net Weight (Piece)	0.276 lb
Model Number	9290031230

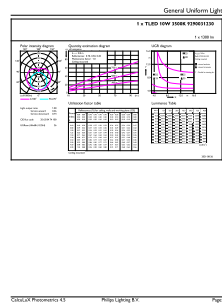
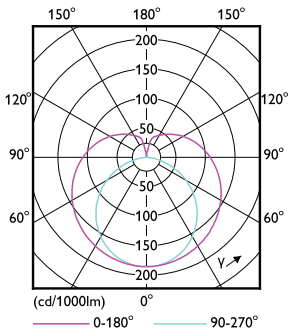
Dimensional drawing



10T5HE/COR/34-835/MF13/G 25/1

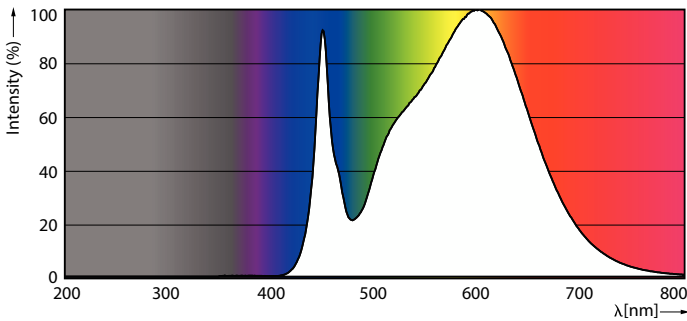
Product	D1	D2	A1	A2	A3
10T5HE/COR/34-835/MF13/G 25/1	5/8 in	3/4 in	33-7/16 in	33-11/16 in	34 in

Photometric data



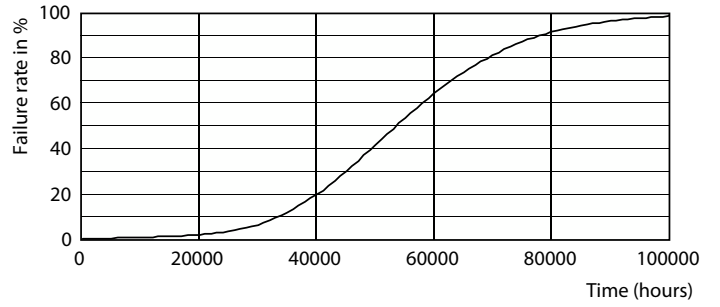
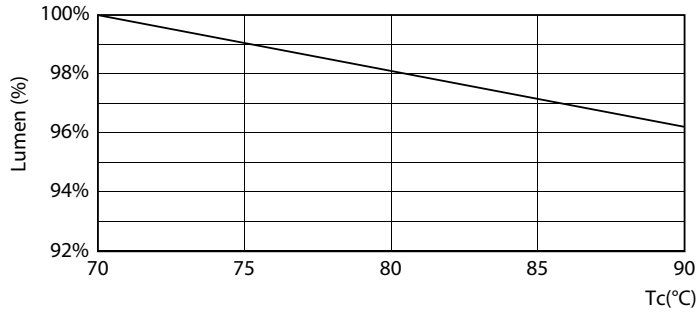
LEDtube COR NAM1 8W G5 1000lm-LDD

LEDtube COR NAM1 10W G5 1300lm 835-GUL



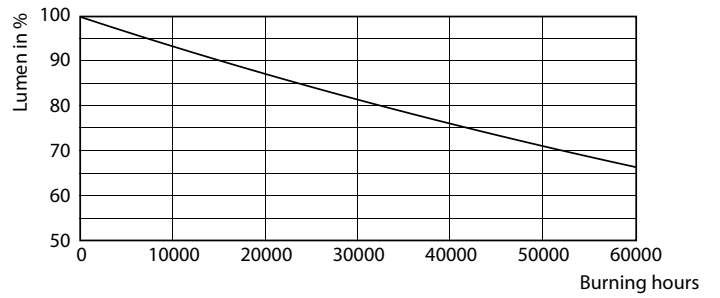
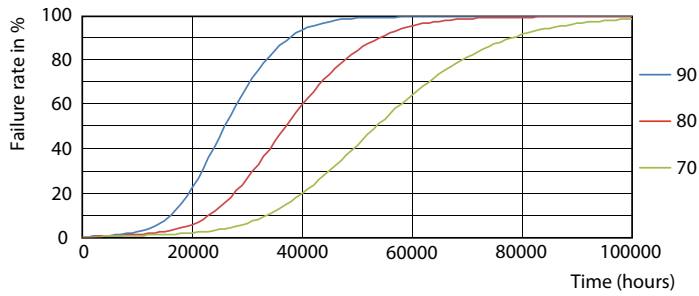
LEDtube COR NAM1 8W G5 1000lm 835-POC

Lifetime



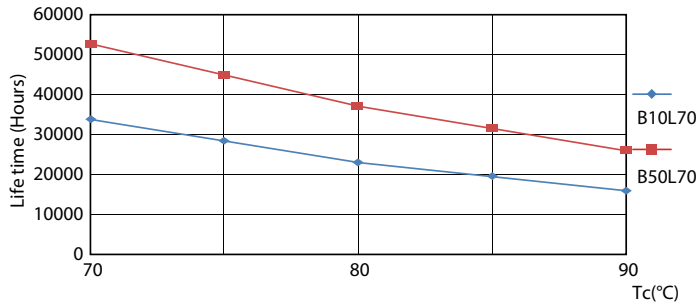
LEDtube COR NAM1 8W 50K LumenVsTc-LMP

Life Expectancy Diagram



FailureRate

Lumen Maintenance Diagram



LifetimeVsTc

