



T5

8T5HE/COR/22-840/MF10/G 25/1

Philips T5 LED tubes offer an affordable, energy saving retrofit solution. The T5 lamps have been engineered to withstand the test of time with a 50,000-hour lifetime and a limited 5-year warranty to back it up. The lighting performance effectively replaces conventional fluorescent T5 HO or T5 HE lamps. Available in either InstantFit (Type A or Type C) or MainsFit (Type B / Ballast bypass), Philips T5 TLEDs provide a variety of options for any application.

Product data

General Information		Input Frequency	
Cap-Base	G5 [G5]	Power Consumption	50 to 60 Hz
EU RoHS compliant	Yes	Wattage Equivalent	8 W
Nominal lifetime	50,000 hour(s)	Starting Time (Nom)	14 W
Switching Cycle	50,000	Warm-up time to 60% light	0.5 s
Lighting Technology	LED	Power Factor (Fraction)	0.5 s
Brand	Philips	Voltage (Nom)	0.9
			120-277 V
Light Technical		Temperature	
Color Code	840 [CCT of 4000K]	Ambient temperature range	-20 °C to 45 °C
Beam Angle (Nom)	200 degree(s)	T-Case Maximum (Nom)	158 °F
Luminous Flux	1,050 lumen		
Color Designation	Cool White (CW)	Controls and Dimming	
Correlated Color Temperature (Nom)	4000 K	Dimmable	Limited
Luminous Efficacy (rated) (Nom)	131.00 lm/W		
Color Consistency	<6	Mechanical and Housing	
Color rendering index (CRI)	80	Bulb Finish	Frosted
LLMF At End Of Nominal Lifetime (Nom)	70 %	Bulb Material	Glass
		Product Length	23-5/8 inch
		Bulb Shape	Tube, double-ended
Operating and Electrical			
Line Frequency	50 to 60 Hz		

Approval and Application

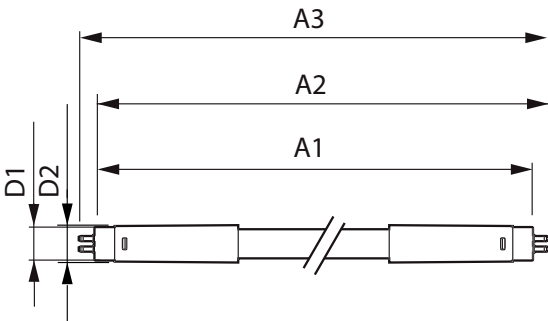
Energy Saving Product	Yes
Approval Marks	RoHS compliance UL certificate

Product Data

Order product name	8T5HE/COR/22-840/MF10/G 25/1
Order code	576157
Numerator - Quantity Per Pack	1

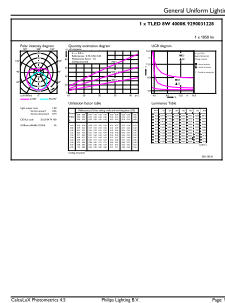
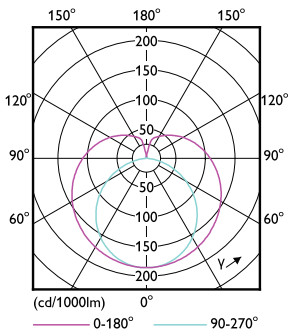
Numerator - Packs per outer box	25
Material number (12NC)	929003122804
Net weight	0.080 kg
Full product name	8T5HE/COR/22-840/MF10/G 25/1
EAN/UPC - Case	50046677576153

Dimensional drawing

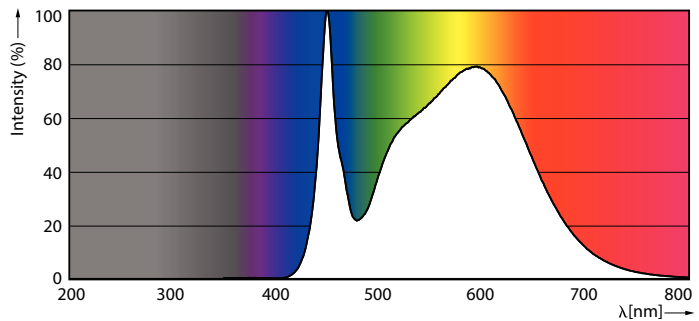


Product	D1	D2	A1	A2	A3
8T5HE/COR/22-840/MF10/G 25/1	15.3 mm	18.2 mm	549 mm	554.9 mm	563.2 mm

Photometric data

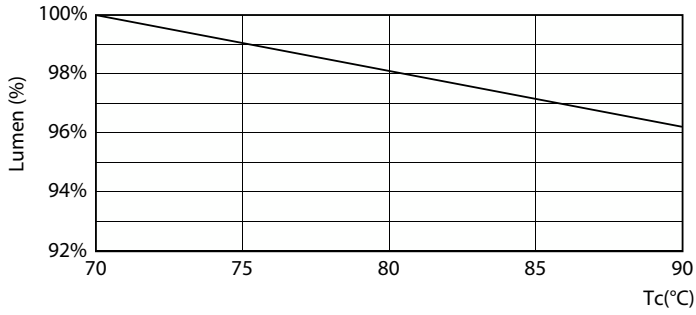


Light Distribution Diagram - 8T5HE/COR/22-840/MF10/G 25/1

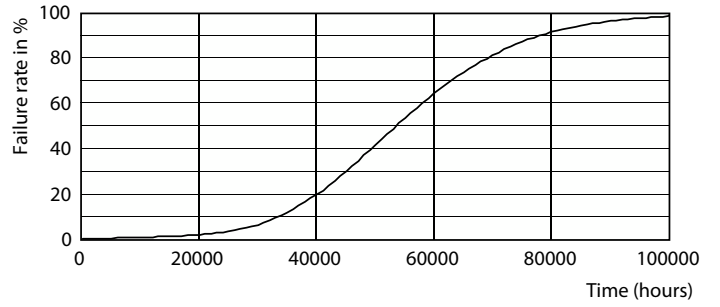


Spectral Power Distribution Colour - 8T5HE/COR/22-840/MF10/G 25/1

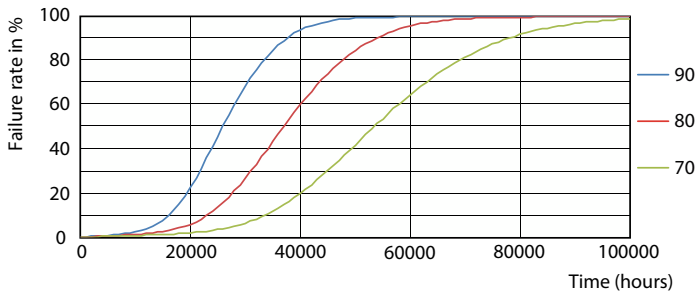
Lifetime



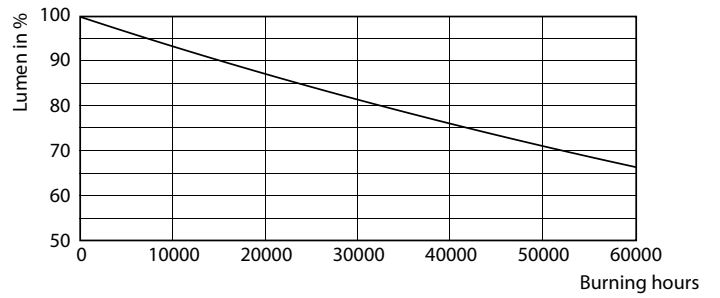
Lumen Maintenance Diagram - 8T5HE/COR/22-840/MF10/G 25/1



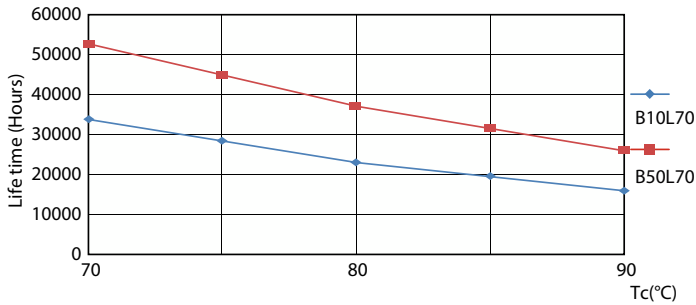
Life Expectancy Diagram - 8T5HE/COR/22-840/MF10/G 25/1



Life Expectancy Diagram - 8T5HE/COR/22-840/MF10/G 25/1



Lumen Maintenance Diagram - 8T5HE/COR/22-840/MF10/G 25/1



Life Expectancy Diagram - 8T5HE/COR/22-840/MF10/G 25/1

