



T8

42T8HO/COR/96-850/MF54/G/R17d 10/1

Our TLEDs are available in InstantFit (Type A / Type C) or MainsFit (Ballast bypass / Type B) versions. The InstantFit lamps work on a broad variety of ballasts and LED drivers. Only InstantFit has over 15,000 lamp & ballast combinations delivering even light output, energy savings and a long lifetime. Our MainsFit products feature a double-ended design, simplifying installation while a proprietary safety circuit minimizes a shock risk. Lamp sizes range from 2-foot to 8-foot and U-bend with a variety of lumen outputs.

Product data

General Information		Lamp Current (Max)	
Base	R17D [R17d (RDC)]		400 mA
EU RoHS compliant	Yes	Lamp Current (Min)	180 mA
Nominal Lifetime (Nom)	50000 h	Starting Time (Nom)	0.5 s
Switching Cycle	50000X	Warm Up Time to 60% Light (Nom)	0.5 s
Light Technical		UL Type	Type B - bypass the ballast
Color Code	850 [CCT of 5000K]	Power Factor (Nom)	0.9
Beam Angle (Nom)	240 °	Voltage (Nom)	120-277 V
Initial lumen (Nom)	5400 lm	Temperature	
Color Designation	Daylight	T-Ambient (Max)	45 °C
Correlated Color Temperature (Nom)	5000 K	T-Ambient (Min)	-20 °C
Luminous Efficacy (rated) (Nom)	128.00 lm/W	T-Storage (Max)	65 °C
Color Consistency	<5	T-Storage (Min)	-40 °C
Color Rendering Index (Nom)	80	T-Case Maximum (Nom)	55 °C
LLMF At End Of Nominal Lifetime (Nom)	70 %	Controls and Dimming	
Operating and Electrical		Dimmable	Limited
Input Frequency	50 to 60 Hz	Mechanical and Housing	
Power (Rated) (Nom)	42 W	Bulb Finish	Frosted

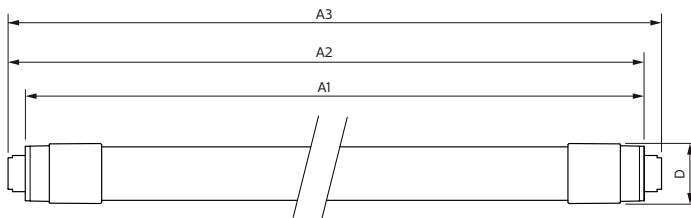
T8

Bulb Material	Glass
Product Length	96 in
Bulb Shape	Tube, double-ended
Approval and Application	
Energy Saving Product	Yes
Approbation Marks	RoHS compliance UL certificate

Product Data	
Order product name	42T8HO/COR/96-850/MF54/G/R17d 10/1

EAN/UPC - Product	046677575755
Order code	575753
Numerator - Quantity Per Pack	1
Numerator - Packs per outer box	10
Material Nr. (12NC)	929003112404
Net Weight (Piece)	0.400 kg
Model Number	9290031124

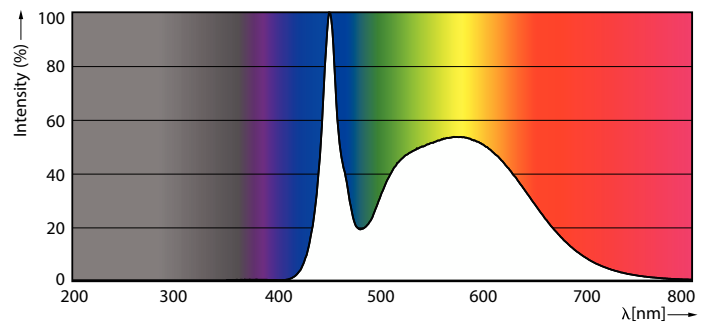
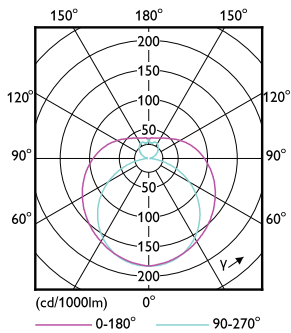
Dimensional drawing



Product
42T8HO/COR/96-850/MF54/G/R17d 10/1

TLED T8 120-277V 33-60W 4400lm 5000K FA8

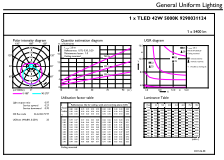
Photometric data



LEDtube COR 8ft 42W FA8 5400lm-LDD

LEDtube COR 8ft 42W FA8 5400lm 850-POC

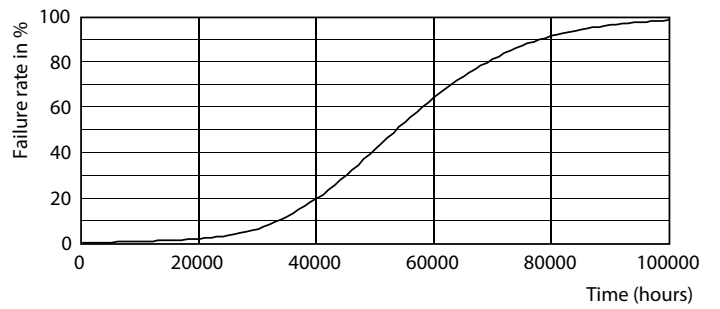
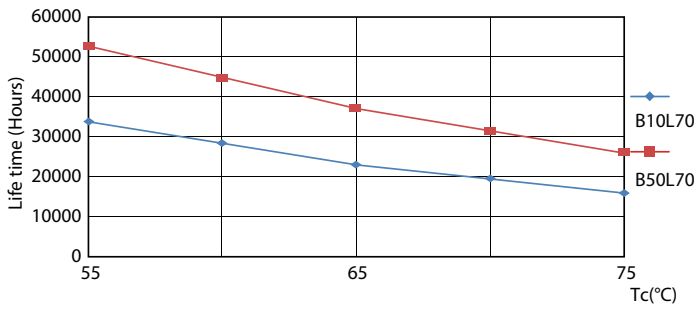
Photometric data



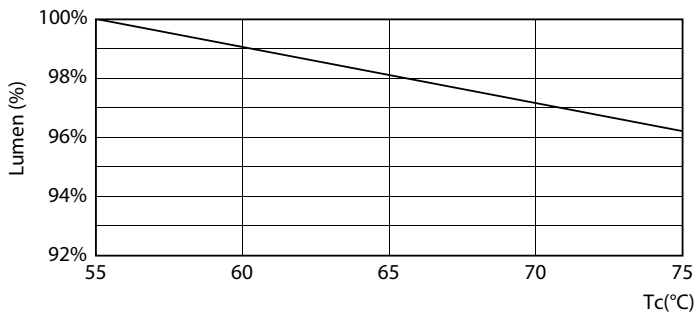
© 2021 Philips Lighting B.V. Page 11

LEDtube COR 8ft 42W R17D 5400lm 850-GUL

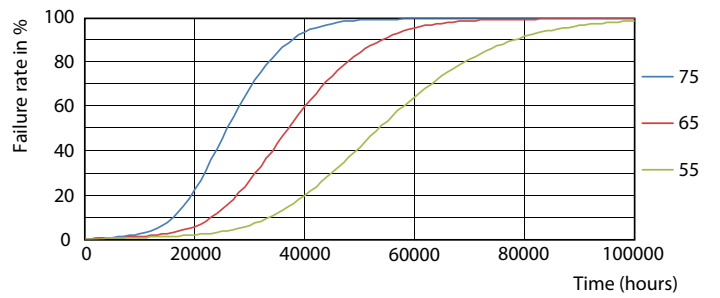
Lifetime



LEDtube COR 8ft 42W 50K LifetimeVsTc-LED



LEDtube 50K-LED

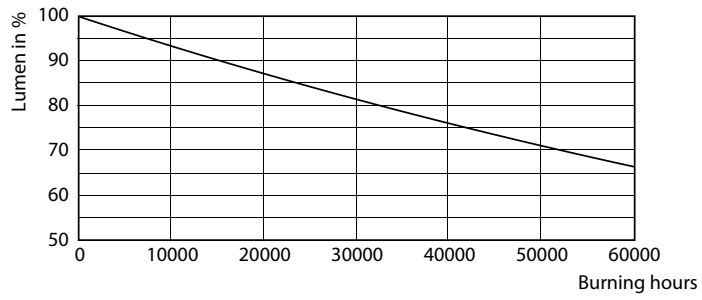


LEDtube COR 8ft 42W 50K LumenVsTc-LMP

LEDtube COR 8ft 42W 50K FailureRate-LED

T8

Lifetime



LEDtube 50K-LMP

