

T8

42T8HO/COR/96-850/MF54/G/FA8 10/1

Our TLEDs are available in InstantFit (Type A / Type C) or MainsFit (Ballast bypass / Type B) versions. The InstantFit lamps work on a broad variety of ballasts and LED drivers. Only InstantFit has over 15,000 lamp & ballast combinations delivering even light output, energy savings and a long lifetime. Our MainsFit products feature a double-ended design, simplifying installation while a proprietary safety circuit minimizes a shock risk. Lamp sizes range from 2-foot to 8-foot and U-bend with a variety of lumen outputs.

Product data

General Information	
Cap-Base	FA8 [FA8]
EU RoHS compliant	Yes
Nominal lifetime	50,000 hour(s)
Switching Cycle	50,000
Lighting Technology	LED
Brand	Philips
Light Technical	
Color Code	850 [CCT of 5000K]
Beam Angle (Nom)	240 degree(s)
Luminous Flux	5,400 lumen
Color Designation	Daylight
Correlated Color Temperature (Nom)	5000 K
Luminous Efficacy (rated) (Nom)	128.00 lm/W
Color Consistency	<5
Color rendering index (CRI)	80
LLMF At End Of Nominal Lifetime (Nom)	70 %

Operating and Electrical	
Line Frequency	50 to 60 Hz
Input Frequency	50 to 60 Hz
Power Consumption	42 W
Wattage Equivalent	96 W
Starting Time (Nom)	0.5 s
Warm-up time to 60% light	0.5 s
Power Factor (Fraction)	0.9
Voltage (Nom)	120-277 V

Temperature	
Ambient temperature range	-20 °C to 45 °C
T-Case Maximum (Nom)	131 °F

Controls and Dimming	
Dimmable	Limited

Mechanical and Housing	
Bulb Finish	Frosted
Bulb Material	Glass

T8

Product Length	94-1/2 inch
Bulb Shape	Tube, double-ended

Approval and Application

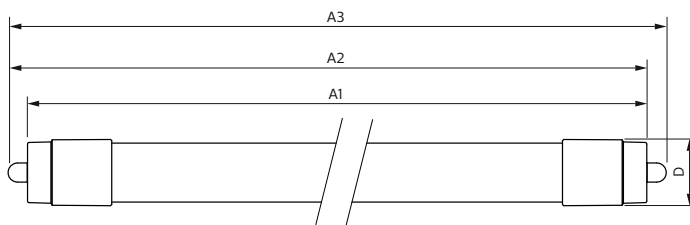
Energy Saving Product	Yes
Approval Marks	RoHS compliance UL certificate DLC compliance

Product Data

Order product name	42T8HO/COR/96-850/MF54/G/FA8 10/1
--------------------	-----------------------------------

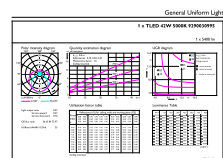
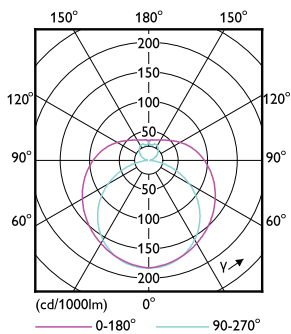
Order code	575142
Numerator - Quantity Per Pack	1
Numerator - Packs per outer box	10
Material number (12NC)	929003099504
Net weight	0.400 kg
Full product name	42T8HO/COR/96-850/MF54/G/FA8 10/1
EAN/UPC - Case	50046677575149

Dimensional drawing



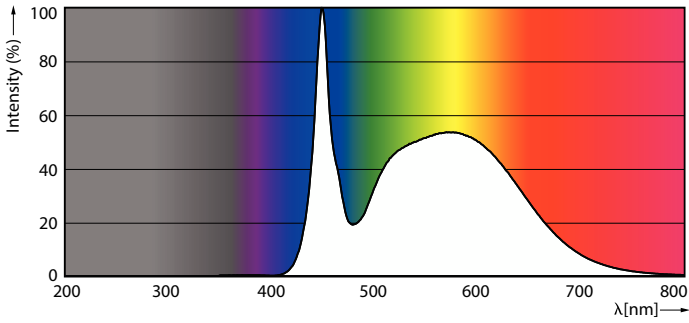
Product	D2	A1	A2	A3
42T8HO/COR/96-850/MF54/G/FA8 10/1	27.9 mm	2,369.8 mm	2,378.7 mm	2,387.8 mm

Photometric data



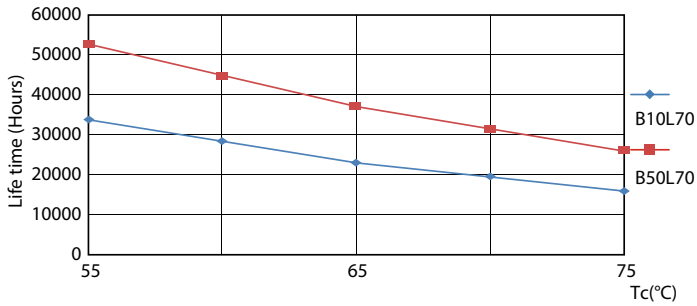
Light Distribution Diagram - 42T8HO/COR/96-850/MF54/G/FA8 10/1

Photometric data

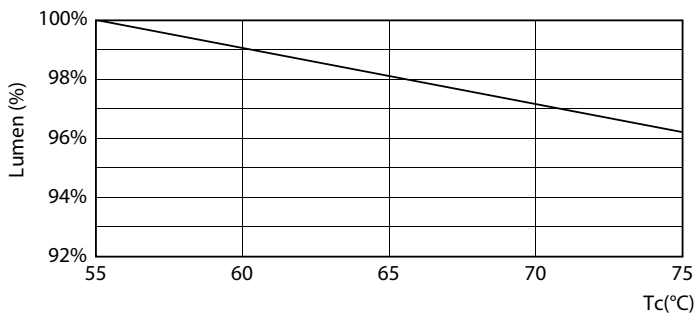


Spectral Power Distribution Colour - 42T8HO/COR/96-850/MF54/G/FA8 10/1

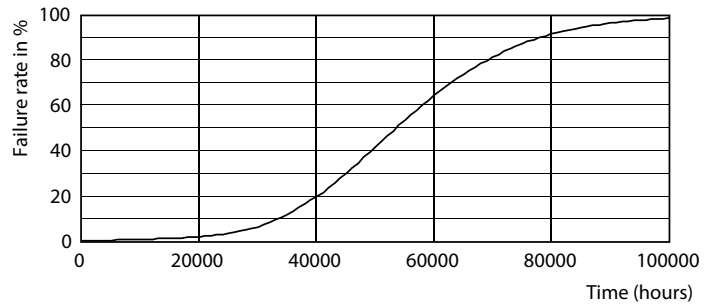
Lifetime



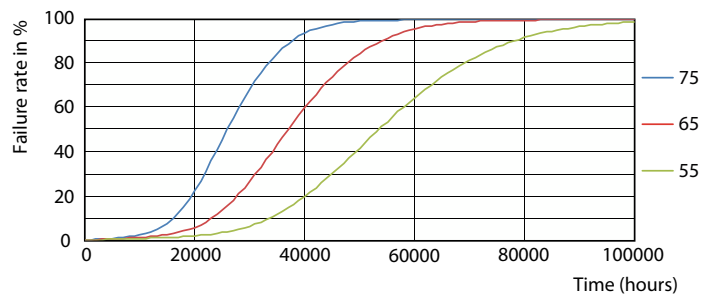
Life Expectancy Diagram - 42T8HO/COR/96-850/MF54/G/FA8 10/1



Lumen Maintenance Diagram - 42T8HO/COR/96-850/MF54/G/FA8 10/1



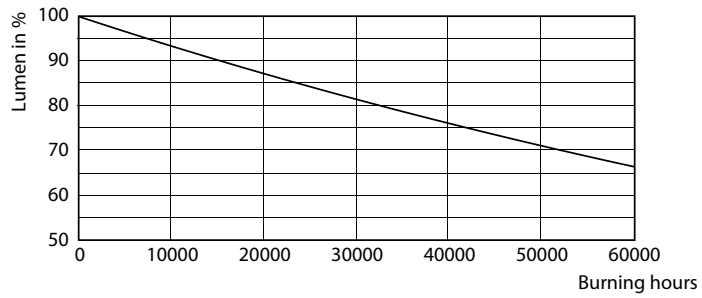
Life Expectancy Diagram - 42T8HO/COR/96-850/MF54/G/FA8 10/1



Life Expectancy Diagram - 42T8HO/COR/96-850/MF54/G/FA8 10/1

T8

Lifetime



Lumen Maintenance Diagram - 42T8HO/COR/96-850/MF54/G/FA8 10/1

