

T8

14T8/LED/48-5CCT/MF18/G/DS 1/10

Philips MainsFit (Type B) color selectable TLED allows a switch between 5 different CCTs from 3000K to 6500K with the flick of a switch. In addition, the ballast bypass lamp has superior color consistency and accuracy across all five CCTs for a uniform lighting effect.

Product data

General information	
Base	G13 [Medium Bi-Pin Fluorescent]
EU RoHS compliant	Yes
Nominal Lifetime (Nom)	50000 h
Switching Cycle	50000X
Tier	CorePro

Light technical	
Color Code	3000K/3500K/4000K/5000K/6500K
Beam Angle (Nom)	240 °
Initial lumen (Nom)	1800 lm
Color Designation	3000K/3500K/4000K/5000K/6500K
Correlated Color Temperature (Nom)	3000 3500 4000 5000 6500 K
Luminous Efficacy (rated) (Nom)	128.00 lm/W
Color Consistency	<6
Color Rendering Index (Nom)	80
LLMF At End Of Nominal Lifetime (Nom)	70 %

Operating and electrical	
Input Frequency	50 to 60 Hz
Power (Rated) (Nom)	14 W
Lamp Current (Max)	120 mA
Lamp Current (Min)	56 mA

Wattage Equivalent	32 W
Starting Time (Nom)	0.5 s
Warm Up Time to 60% Light (Nom)	0.5 s
UL Type	Type B - bypass the ballast
Power Factor (Nom)	0.9
Voltage (Nom)	120-277 V

Temperature	
T-Ambient (Max)	113 °F
T-Ambient (Min)	-4 °F
T-Storage (Max)	149 °F
T-Storage (Min)	-40 °F
T-Case Maximum (Nom)	158 °F

Controls and dimming	
Dimmable	No

Mechanical and housing	
Bulb Finish	Frosted
Bulb Material	Glass
Product Length	47-1/4 in
Bulb Shape	Tube, double-ended

T8

Approval and application

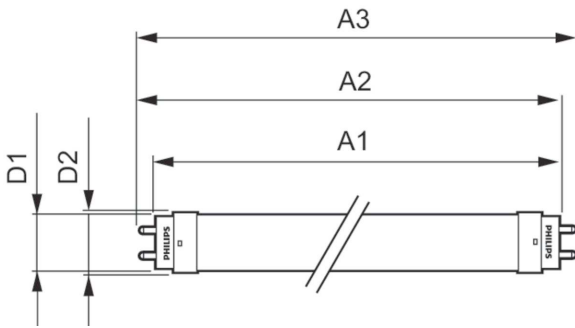
Energy Saving Product	Yes
Approval Marks	RoHS compliance UL certificate DLC compliance
Energy Consumption kWh/1000 h	- kWh

Product data

Order product name	14T8/LED/48-5CCT/MF18/G/DS 1/10
EAN/UPC - Product	50046677568516

Order code	568519
Numerator - Quantity Per Pack	1
Numerator - Packs per outer box	1
Material Nr. (12NC)	929003051333
Net Weight (Piece)	0.474 lb
Model Number	9290030513

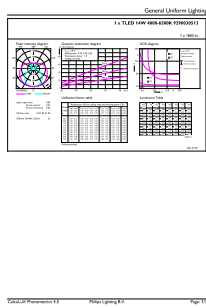
Dimensional drawing



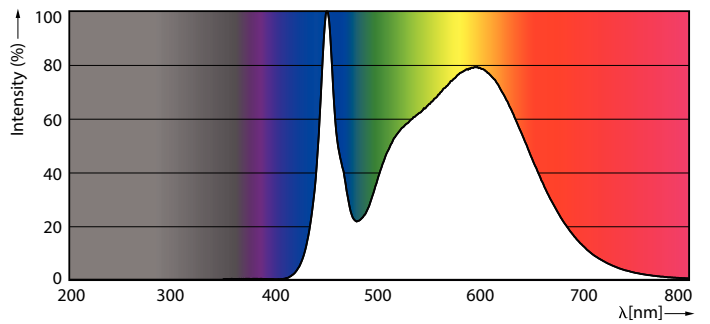
14T8/LED/48-5CCT/MF18/G/DS 1/10

Product	D1	D2	A1	A2	A3
14T8/LED/48-5CCT/ MF18/G/DS 1/10	1-1/16 in	1-1/8 in	47-3/16 in	47-1/2 in	47-3/4 in

Photometric data

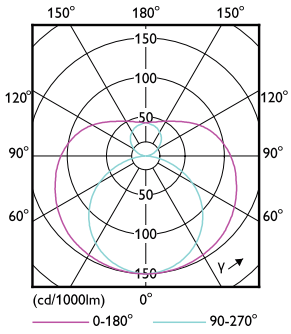


LEDtube DS 14W G13 1800lm 840



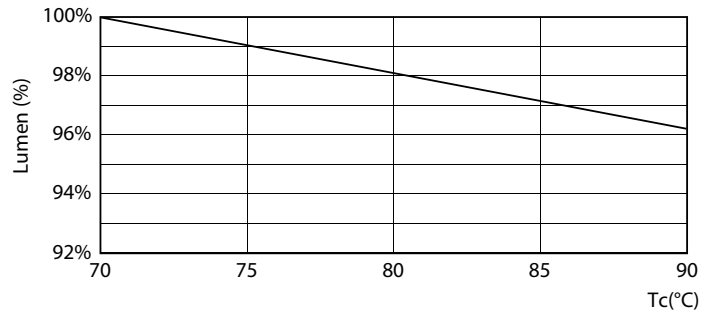
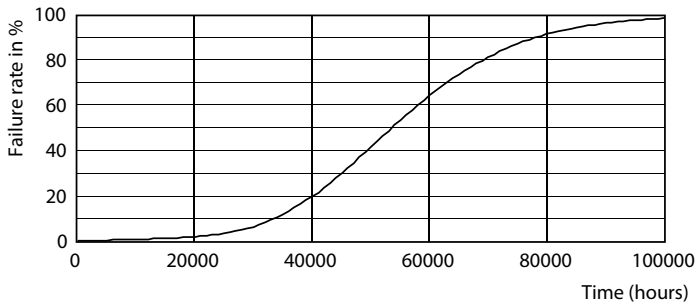
LEDtube DS 14W G13 1800lm 840

Photometric data

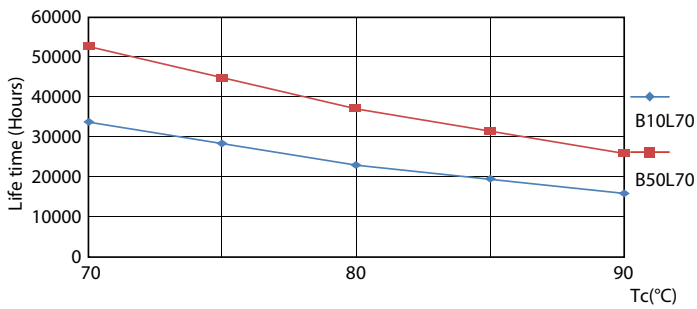


LEDtube DS 14W G13 1800lm

Lifetime

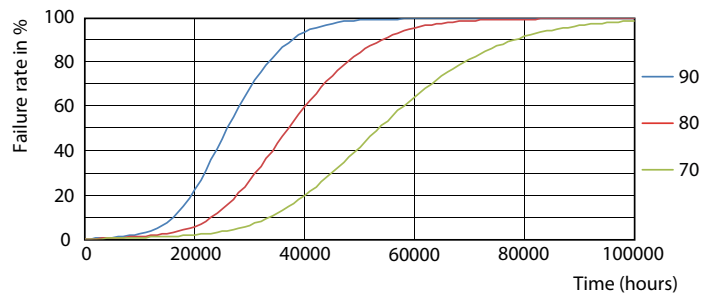


Life Expectancy Diagram



LEDtube DS 14W 50K LifetimeVsTc

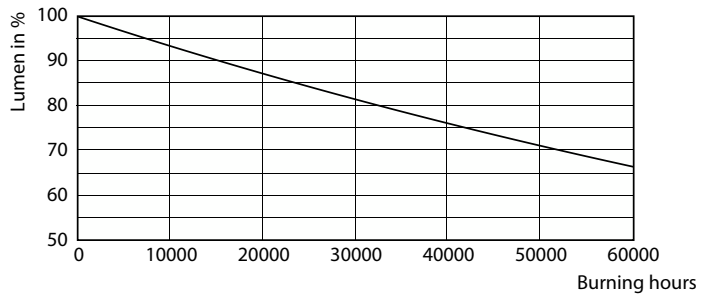
LEDtube DS 14W 50K LumenVsTc



LEDtube DS 14W 50K FailureRate

T8

Lifetime



Lumen Maintenance Diagram

