



MASTER Value LEDtube Universal T8

MAS LEDtube VLE UN 1200mm UO 15.5W840 T8

The new Philips MASTER Value LEDtube Universal T8 brings ease and simplicity to your lighting project. That's because you do not need to match the driver technology anymore: a unique design enables the Philips MASTER Value LEDtube Universal T8 to directly fit in luminaires operating on either electromagnetic ballasts or HF electronic ballasts or mains power connection. It is so simple to operate and you no longer need to stock two types of tubes! Perfectly safe, reliable & easy to install Philips MASTER Value LEDtube Universal T8 is the ideal alternative to standard fluorescent tubes to maximize value over lifetime with high energy saving and lower maintenance costs.

Product data

General information	
Base	G13 [Medium Bi-Pin Fluorescent]
EU RoHS compliant	Yes
Nominal Lifetime (Nom)	60000 h
Switching Cycle	50000X
Flux measurement reference	Sphere

Light technical	
Color Code	841 [CCT of 4100K (841)]
Beam Angle (Nom)	190 °
Initial lumen (Nom)	2500 lm
Color Designation	Cool White (CW)
Correlated Color Temperature (Nom)	4000 K
Luminous Efficacy (rated) (Nom)	161 lm/W
Color Consistency	<6
Color Rendering Index (Nom)	80

LLMF At End Of Nominal Lifetime (Nom) 70 %	
--	--

Operating and electrical	
Input Frequency	50 to 60 Hz
Power (Rated) (Nom)	15.5 W
Lamp Current (Nom)	75 mA
Starting Time (Nom)	0.5 s
Warm Up Time to 60% Light (Nom)	0.5 s
Power Factor (Nom)	0.9
Voltage (Nom)	220-240 V

Temperature	
T-Ambient (Max)	113 °F
T-Ambient (Min)	-4 °F
T-Storage (Max)	149 °F
T-Storage (Min)	-40 °F

MASTER Value LEDtube Universal T8

T-Case Maximum (Nom)	131 °F
----------------------	--------

Controls and dimming

Dimmable	No
----------	----

Mechanical and housing

Bulb Finish	Frosted
Bulb Material	Glass
Product Length	48 in
Bulb Shape	Tube, double-ended

Approval and application

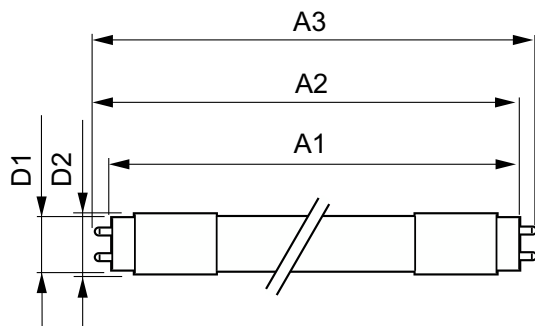
Energy Efficiency Class	C
Energy Saving Product	Yes
Approbation Marks	TUV
Approbation Marks	RoHS compliance CE marking KEMA Keur certificate

Energy Consumption kWh/1000 h	16 kWh
EPREL Registration Number	403659

Product data

Order product name	MAS LEDtube VLE UN 1200mm UO 15.5W840 T8
EAN/UPC - Product	8719514316706
Order code	367094
Numerator - Quantity Per Pack	1
Numerator - Packs per outer box	10
Material Nr. (12NC)	929002997102
Copy Net Weight (Piece)	0.529 lb

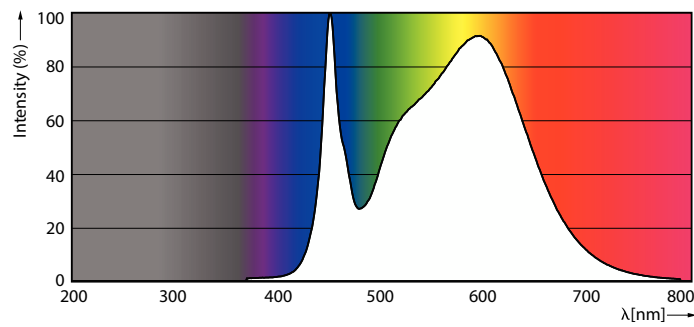
Dimensional drawing



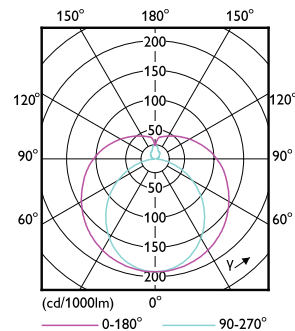
MAS LEDtube VLE UN 1200mm UO 15.5W840 T8

Product	D1	D2	A1	A2	A3
MAS LEDtube VLE UN 1200mm UO 15.5W840 T8	1-1/16 in	1-1/8 in	47-1/4 in	47-1/2 in	47-3/4 in

Photometric data



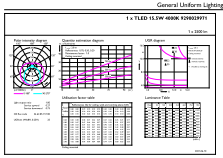
LEDtube MAS 1 15,5W G13 2500lm 840-POC



LEDtube MAS 1 15,5W G13 2300lm-LDD

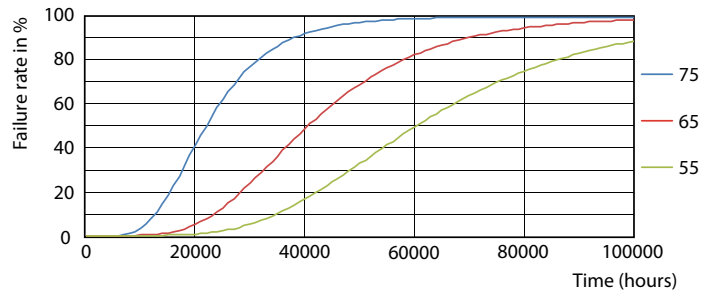
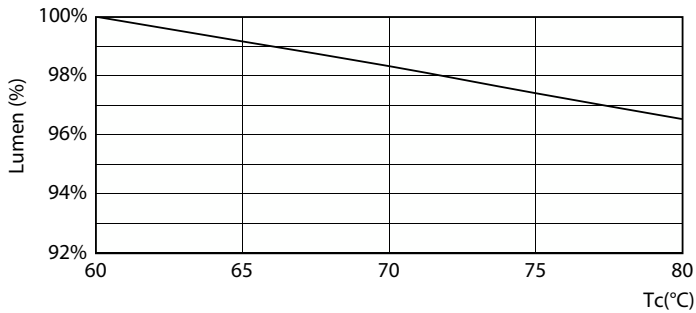
MASTER Value LEDtube Universal T8

Photometric data

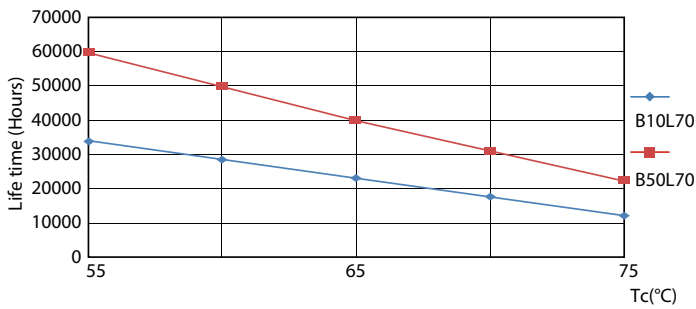


LEDtube MAS 1 15,5W G13 2500lm 840-GUL

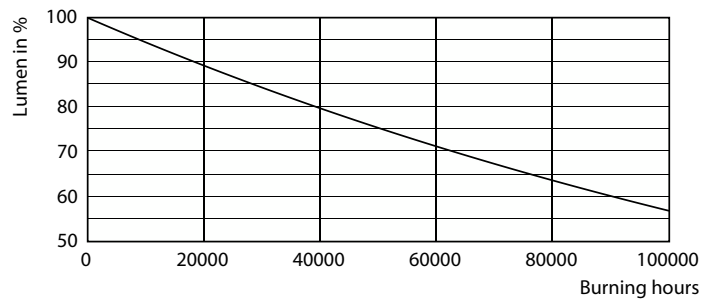
Lifetime



LEDtube MAS 1 15,5W 60K LumenVsTc-LMP



LEDtube MAS 1 15,5W 60K FailureRate-LED



LEDtube MAS 1 15,5W 60K LifetimeVsTc-LED

Lumen Maintenance Diagram

MASTER Value LEDtube Universal T8

Lifetime



Life Expectancy Diagram

