

T8

10.5T8/MAS/48-850/MF16/P 10/1

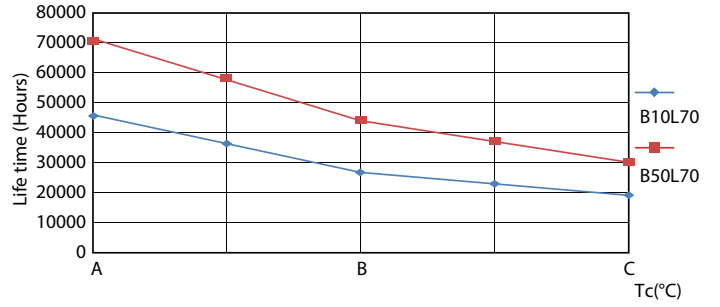
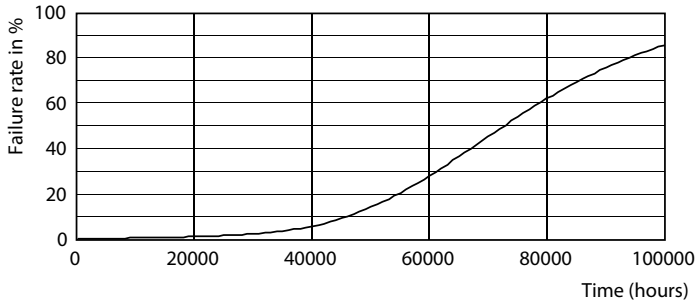
Philips MainsFit (UL Type B) MasterClass T8 LED tubes with industry leading reliability, shatter-prevention and lifetime. The UL Type B LED tubes are designed with easy installation and long-term maintenance simplicity in mind. Upgrade your lighting to MasterClass and realize 70,000 hour LED lifetime backed by a 7-year, full replacement limited warranty.

Product data

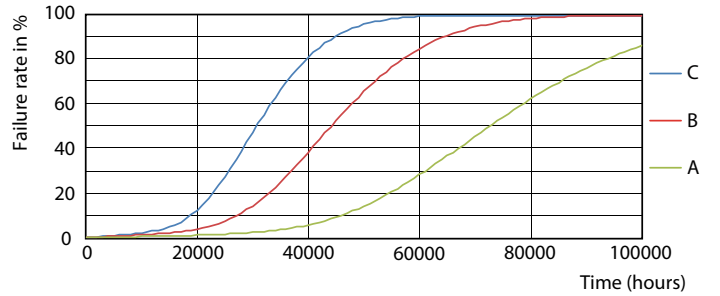
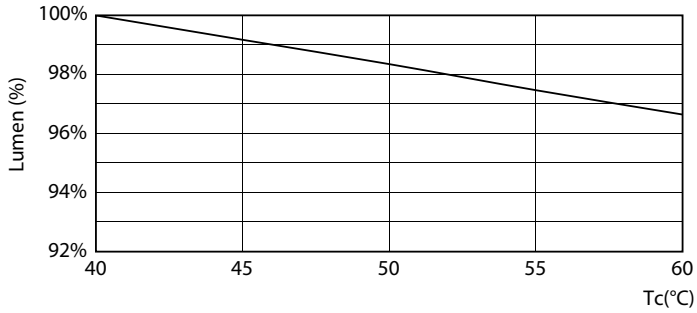
General Information	
Base	G13 [Medium Bi-Pin Fluorescent]
EU RoHS compliant	Yes
Nominal Lifetime (Nom)	70000 h
Switching Cycle	50000X
Light Technical	
Color Code	850 [CCT of 5000K]
Beam Angle (Nom)	180 °
Initial lumen (Nom)	1650 lm
Color Designation	Daylight
Correlated Color Temperature (Nom)	5000 K
Luminous Efficacy (rated) (Nom)	157.00 lm/W
Color Consistency	<5
Color Rendering Index (Nom)	80
LLMF At End Of Nominal Lifetime (Nom)	70 %
Operating and Electrical	
Input Frequency	50 to 60 Hz
Power (Rated) (Nom)	10.5 W
Lamp Current (Max)	100 mA
Lamp Current (Min)	43 mA

Starting Time (Nom)	0.5 s
Warm Up Time to 60% Light (Nom)	0.5 s
UL Type	Type B - bypass the ballast
Power Factor (Nom)	0.9
Voltage (Nom)	120-277 V
Temperature	
T-Ambient (Max)	45 °C
T-Ambient (Min)	-20 °C
T-Storage (Max)	65 °C
T-Storage (Min)	-40 °C
T-Case Maximum (Nom)	70 °C
Controls and Dimming	
Dimmable	Limited
Mechanical and Housing	
Bulb Finish	Frosted
Bulb Material	Plastic
Product Length	48 in
Bulb Shape	Tube, double-ended

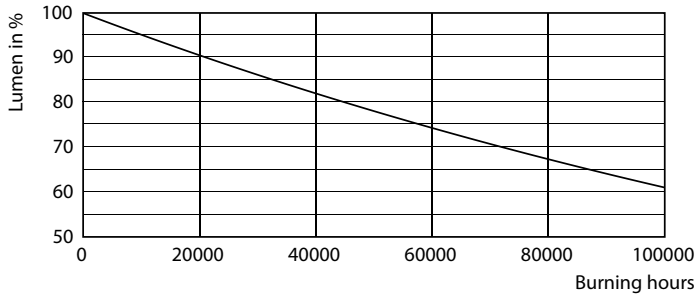
Lifetime



LEDtube_70K-LED LEDtube_70K_LifetimeVsTc-LED



LEDtube_70K_LumenVsTc-LMP LEDtube_70K_FailureRate-LED



LEDtube_70K-LMP

