



# MASTER LEDtube InstantFit HF T5

## Master LEDtube HF 1200mm HE 16.5W 865 T5

The Philips MASTER LEDtube integrates a LED light source into a traditional fluorescent form factor. Its unique design creates a perfectly uniform visual appearance, which cannot be distinguished from traditional fluorescent. These T5 lighting tubes are the right choice for absolute performance and are designed to stand up to everyday conditions. Unparalleled savings thanks to low energy consumption and an exceptionally long lifetime make these T5 LED tubes the choice for every demanding application.

### Product data

General information		Operating and electrical	
Base	G5 [ G5]	Input Frequency	30K to 100K Hz
EU RoHS compliant	Yes	Power (Rated) (Nom)	16.5 W
Nominal Lifetime (Nom)	60000 h	Lamp Current (Max)	350 mA
Switching Cycle	50000X	Lamp Current (Min)	150 mA
Flux measurement reference	Sphere	Starting Time (Nom)	0.5 s
		Warm Up Time to 60% Light (Nom)	0.5 s
		Power Factor (Nom)	0.92
		Voltage (Nom)	70-120 V
Light technical		Temperature	
Color Code	865 [ CCT of 6500K]	T-Ambient (Max)	113 °F
Beam Angle (Nom)	200 °	T-Ambient (Min)	-4 °F
Initial lumen (Nom)	2500 lm	T-Storage (Max)	149 °F
Color Designation	Cool Daylight	T-Storage (Min)	-40 °F
Correlated Color Temperature (Nom)	6500 K	T-Case Maximum (Nom)	149 °F
Luminous Efficacy (rated) (Nom)	151 lm/W		
Color Consistency	<6		
Color Rendering Index (Nom)	80		
LLMF At End Of Nominal Lifetime (Nom)	70 %		

# MASTER LEDtube InstantFit HF T5

## Controls and dimming

Dimmable	Yes - Check ballast compatibility
----------	-----------------------------------

## Mechanical and housing

Bulb Finish	Frosted
Bulb Material	Glass
Product Length	48 in
Bulb Shape	Tube, double-ended

## Approval and application

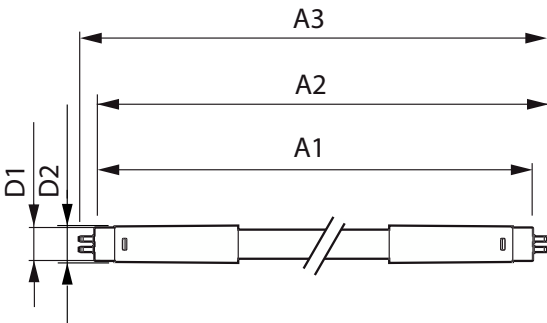
Energy Efficiency Class	D
Energy Saving Product	Yes
Approbation Marks	TUV
Approbation Marks	RoHS compliance CE marking KEMA Keur certificate

Energy Consumption kWh/1000 h	17 kWh
EPREL Registration Number	406188

## Product data

Order product name	Master LEDtube HF 1200mm HE 16.5W 865 T5
EAN/UPC - Product	8718696743331
Order code	366393
Numerator - Quantity Per Pack	1
Numerator - Packs per outer box	10
Material Nr. (12NC)	929001391202
Copy Net Weight (Piece)	0.351 lb

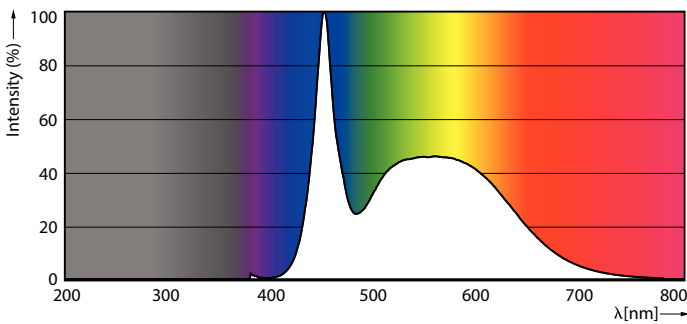
## Dimensional drawing



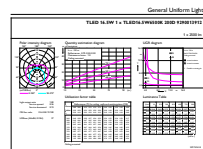
Master LEDtube HF 1200mm HE 16.5W 865 T5

Product	D1	D2	A1	A2	A3
Master LEDtube HF 1200mm HE 16.5W 865 T5	5/8 in	3/4 in	45-1/4 in	45-9/16 in	45-13/16 in

## Photometric data



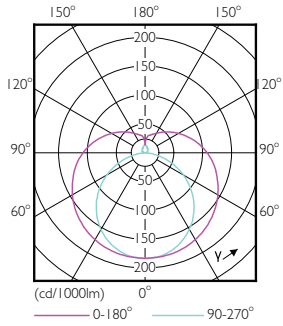
LEDtubes, TLED T12 120-277V 20W 6500K G13



LEDtube 1200mm 16-5W G5 865 2500lm

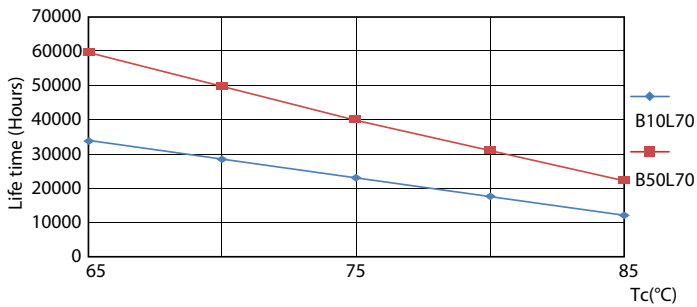
# MASTER LEDtube InstantFit HF T5

## Photometric data

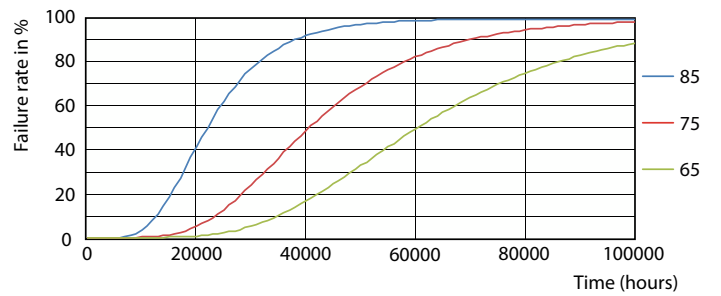


LEDtube 600mm 8W G5 830 1000lm

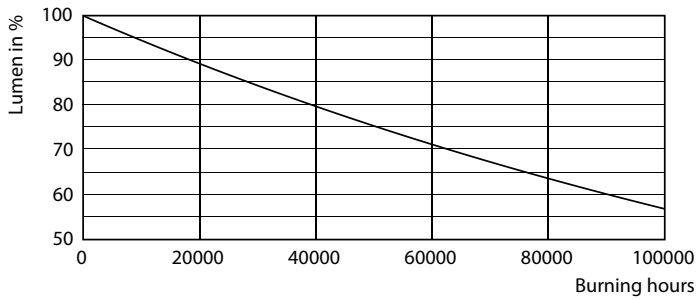
## Lifetime



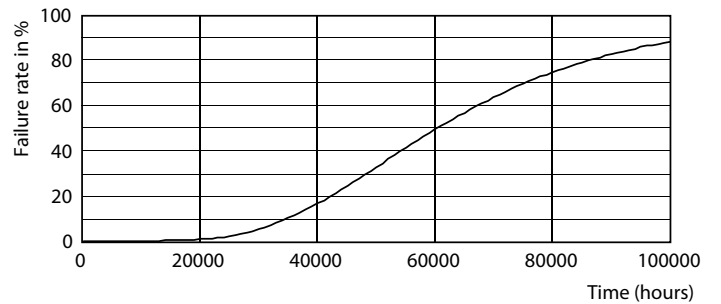
LifetimeVsTc



FailureRate



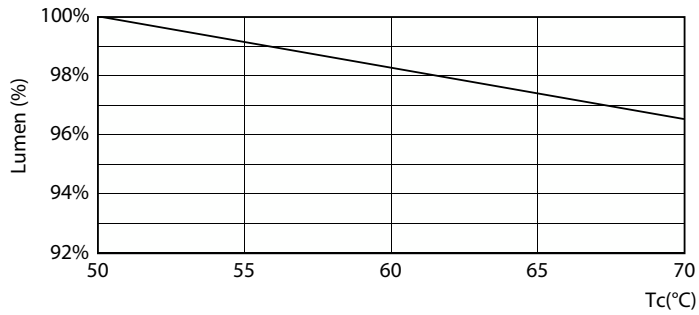
Lumen Maintenance Diagram



Life Expectancy Diagram

# MASTER LEDtube InstantFit HF T5

## Lifetime



LEDtube MAS SLR 16,5W 60K LumenVsTc-LMP

