

T8

15.5T8/MAS/48-835/IF24/P/DIM 25/1

Our TLEDs are available in InstantFit (Type A / Type C) or MainsFit (Ballast bypass / Type B) versions. The InstantFit lamps work on a broad variety of ballasts and LED drivers. Only InstantFit has over 15,000 lamp & ballast combinations delivering even light output, energy savings and a long lifetime. Our MainsFit products feature a double-ended design, simplifying installation while a proprietary safety circuit minimizes a shock risk. Lamp sizes range from 2-foot to 8-foot and U-bend with a variety of lumen outputs.

Product data

General Information	
Cap-Base	G13 [Medium Bi-Pin Fluorescent]
EU RoHS compliant	Yes
Nominal lifetime	70,000 hour(s)
Switching Cycle	50,000
Lighting Technology	LED
Brand	Philips
Light Technical	
Color Code	835 [CCT of 3500K]
Beam Angle (Nom)	180 degree(s)
Luminous Flux	2,400 lumen
Color Designation	White (WH)
Correlated Color Temperature (Nom)	3500 K
Luminous Efficacy (rated) (Nom)	154 lm/W
Color Consistency	<6
Color rendering index (CRI)	80
LLMF At End Of Nominal Lifetime (Nom)	70 %

Operating and Electrical	
Line Frequency	20K to 120K Hz
Input Frequency	20K to 120K Hz
Power Consumption	15.5 W
Wattage Equivalent	32 W
Starting Time (Nom)	0.5 s
Warm-up time to 60% light	0.5 s
Power Factor (Fraction)	0.9
Voltage (Nom)	120-277,347 V

Temperature	
Ambient temperature range	-20 °C to 55 °C
T-Case Maximum (Nom)	104 °F

Controls and Dimming	
Dimmable	Only with specific dimmers

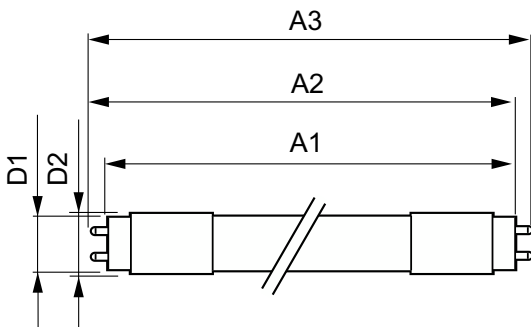
Mechanical and Housing	
Bulb Finish	Frosted
Bulb Material	Plastic

T8

Product Length	47-1/4 inch
Bulb Shape	Tube, double-ended
Approval and Application	
Energy Saving Product	Yes
Approval Marks	RoHS compliance UL certificate DLC compliance
Energy Consumption kWh/1000 h	- kWh
Product Data	
Order product name	15.5T8/MAS/48-835/IF24/P/DIM 25/1

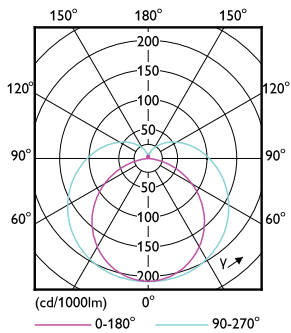
Order code	533372
Numerator - Quantity Per Pack	1
Numerator - Packs per outer box	25
Material number (12NC)	929002016304
Net weight	0.165 kg
Full product name	15.5T8/MAS/48-835/IF24/P/DIM 25/1
EAN/UPC - Case	50046677545180

Dimensional drawing

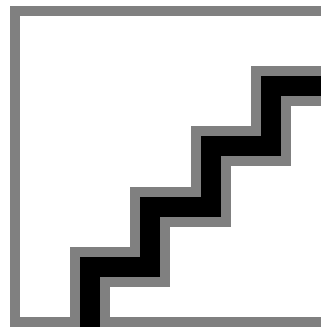


Product	D1	D2	A1	A2	A3
15.5T8/MAS/48-835/IF24/P/DIM 25/1	25.7 mm	28 mm	1,198.1 mm	1,205.2 mm	1,212.3 mm

Photometric data

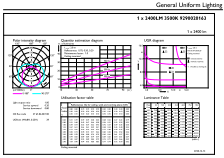


Light Distribution Diagram - 15.5T8/MAS/48-835/IF24/P/DIM 25/1

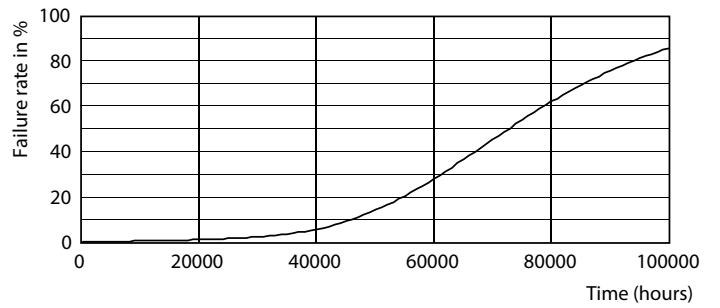
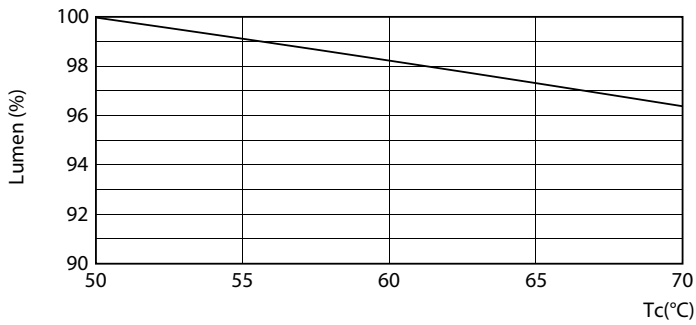


Spectral Power Distribution Colour - 15.5T8/MAS/48-835/IF24/P/DIM 25/1

Photometric data

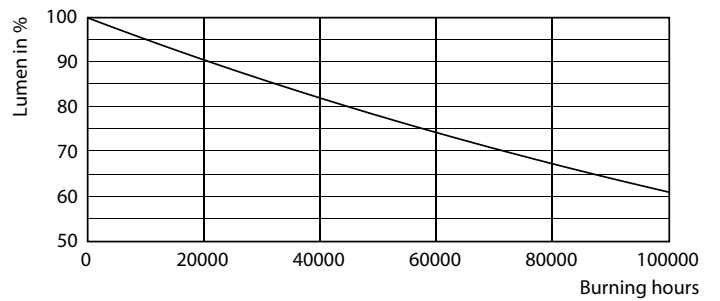
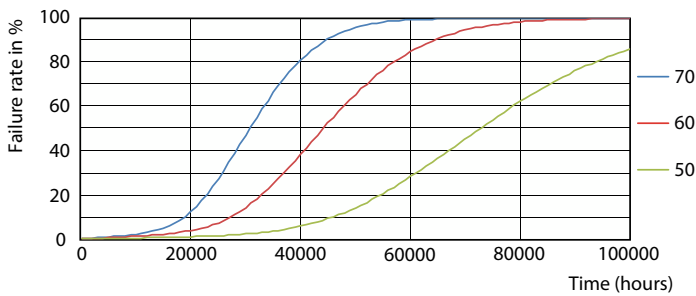


Lifetime



Lumen Maintenance Diagram - 15.5T8/MAS/48-835/IF24/P/DIM 25/1

Life Expectancy Diagram - 15.5T8/MAS/48-835/IF24/P/DIM 25/1

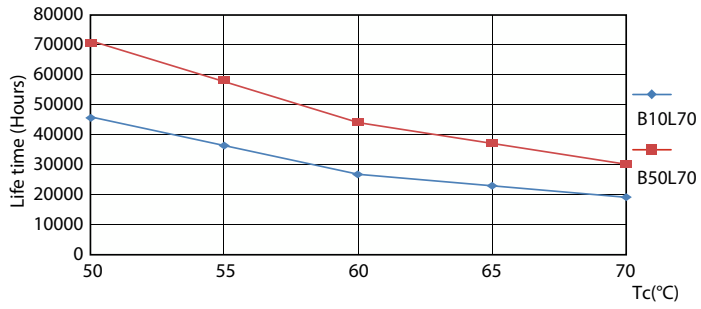


Life Expectancy Diagram - 15.5T8/MAS/48-835/IF24/P/DIM 25/1

Lumen Maintenance Diagram - 15.5T8/MAS/48-835/IF24/P/DIM 25/1

T8

Lifetime



Life Expectancy Diagram - 15.5T8/MAS/48-835/IF24/P/DIM 25/1

