

# T8

## 9.5T8/MAS/48-840/IF16/P/DIM 10/1

Our TLEDs are available in InstantFit (Type A / Type C) or MainsFit (Ballast bypass / Type B) versions. The InstantFit lamps work on a broad variety of ballasts and LED drivers. Only InstantFit has over 15,000 lamp & ballast combinations delivering even light output, energy savings and a long lifetime. Our MainsFit products feature a double-ended design, simplifying installation while a proprietary safety circuit minimizes a shock risk. Lamp sizes range from 2-foot to 8-foot and U-bend with a variety of lumen outputs.

### Product data

General Information	
Base	G13 [ Medium Bi-Pin Fluorescent]
EU RoHS compliant	Yes
Nominal Lifetime (Nom)	70000 h
Switching Cycle	50000X
Light Technical	
Color Code	841 [ CCT of 4100K (841)]
Beam Angle (Nom)	180 °
Initial lumen (Nom)	1600 lm
Color Designation	Cool White (CW)
Correlated Color Temperature (Nom)	4000 K
Luminous Efficacy (rated) (Nom)	168.00 lm/W
Color Consistency	<6
Color Rendering Index (Nom)	80
LLMF At End Of Nominal Lifetime (Nom)	70 %
Operating and Electrical	
Input Frequency	50 to 60 Hz
Power (Rated) (Nom)	9.5 W

Starting Time (Nom)	0.5 s
Warm Up Time to 60% Light (Nom)	0.5 s
UL Type	Type A - works on ballast
Power Factor (Nom)	0.9
Voltage (Nom)	120-277, 347 V
Temperature	
T-Ambient (Max)	55 °C
T-Ambient (Min)	-20 °C
T-Storage (Max)	65 °C
T-Storage (Min)	-40 °C
T-Case Maximum (Nom)	55 °C
Controls and Dimming	
Dimmable	Yes
Mechanical and Housing	
Bulb Material	Plastic
Product Length	48 in

# T8

## Approval and Application

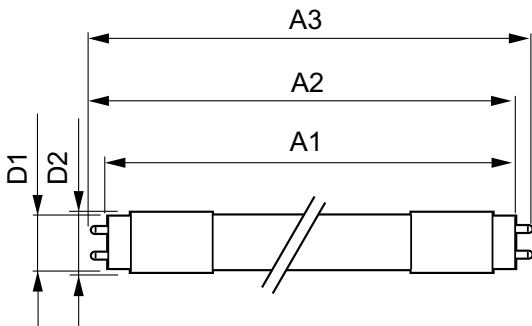
Energy Efficiency Label (EEL)	Not applicable
Energy Saving Product	Yes
Approbation Marks	RoHS compliance UL certificate DLC compliance
Energy Consumption kWh/1000 h	- kWh

## Product Data

Order product name	9.5T8/MAS/48-840/IF16/P/DIM 10/1
--------------------	----------------------------------

EAN/UPC - Product	046677473990
Order code	473990
Numerator - Quantity Per Pack	1
Numerator - Packs per outer box	10
Material Nr. (12NC)	929002016004
Net Weight (Piece)	0.220 kg
Model Number	9290020160

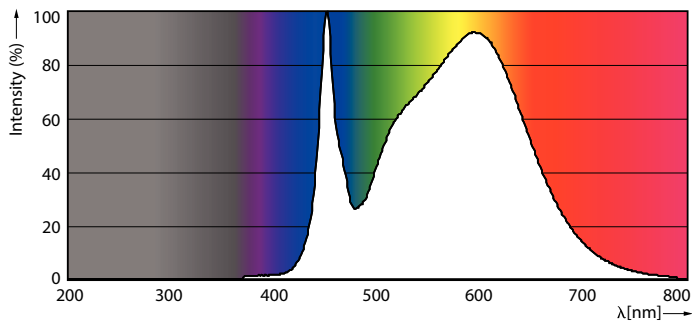
## Dimensional drawing



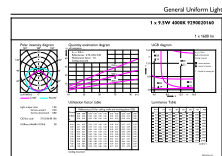
TLED 1200mmT8 120-277 9.5W 1600lm 4000K

Product	D1	D2	A1	A2	A3
9.5T8/MAS/48-840/IF16/P/DIM 10/1	25.7 mm	28 mm	1198.1 mm	1205.2 mm	1212.3 mm

## Photometric data



LEDtube 1200mm T8 9,5W 1600lm 4000K

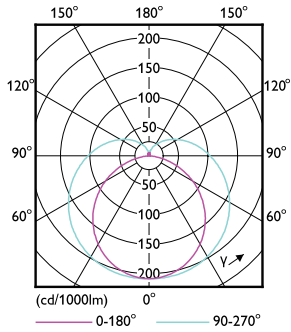


OSRAM Photometric 11 - 1100x1100 - Page 11

LEDtube 1200mm T8 9,5W 1600lm 4000K

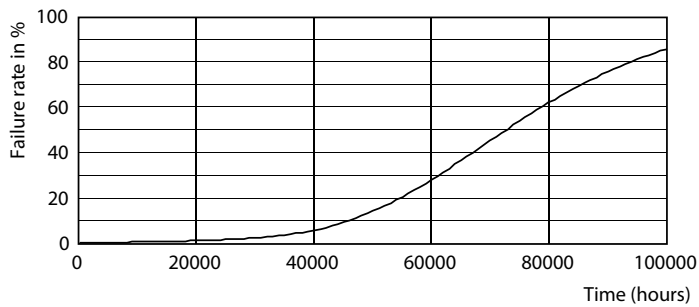
# T8

## Photometric data

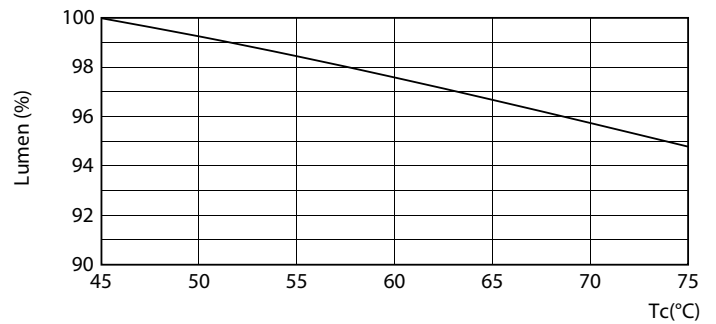


LEDtube 1200mm T8 9,5W

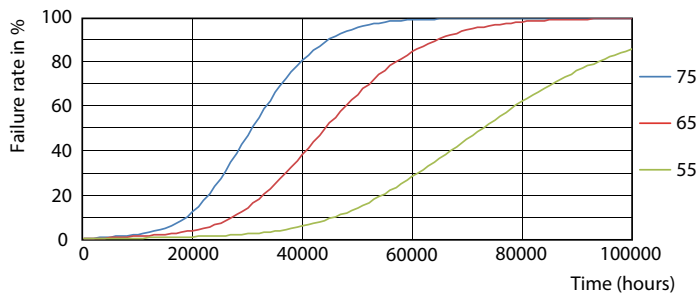
## Lifetime



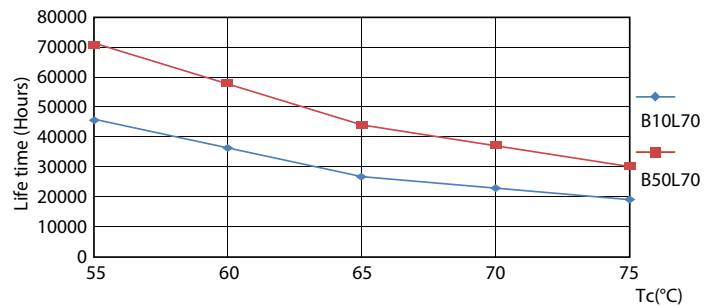
LEDtube 1200mm T8 9,5W



LEDtube 1200mm T8 9,5W LumenVsTc



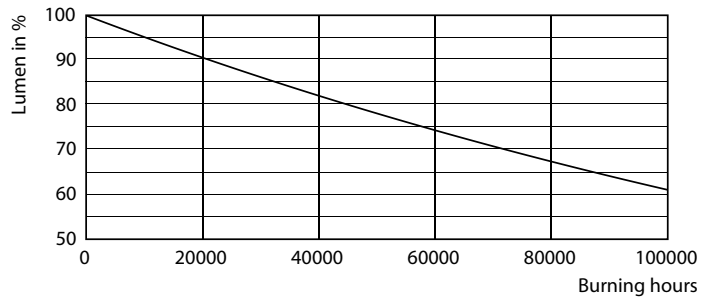
LEDtube 1200mm T8 9,5W FailureRate



LEDtube 1200mm T8 9,5W LifetimeVsTc

# T8

## Lifetime



LEDtube 1200mm T8 9,5W

