



# T8

## 44T8HO/COR/96-850/MF54/G/R17d 10/1

Our TLEDs are available in InstantFit (Type A / Type C) or MainsFit (Ballast bypass / Type B) versions. The InstantFit lamps work on a broad variety of ballasts and LED drivers. Only InstantFit has over 15,000 lamp & ballast combinations delivering even light output, energy savings and a long lifetime. Our MainsFit products feature a double-ended design, simplifying installation while a proprietary safety circuit minimizes a shock risk. Lamp sizes range from 2-foot to 8-foot and U-bend with a variety of lumen outputs.

### Product data

General Information	
Base	R17D [ R17d (RDC)]
EU RoHS compliant	Yes
Nominal Lifetime (Nom)	50000 h
Switching Cycle	50000X
Light Technical	
Color Code	850 [ CCT of 5000K]
Beam Angle (Nom)	240 °
Initial lumen (Nom)	5400 lm
Color Designation	Daylight
Correlated Color Temperature (Nom)	5000 K
Luminous Efficacy (rated) (Nom)	122.00 lm/W
Color Consistency	<5
Color Rendering Index (Nom)	82
LLMF At End Of Nominal Lifetime (Nom)	70 %
Operating and Electrical	
Input Frequency	50 to 60 Hz
Power (Rated) (Nom)	44 W

Lamp Current (Max)	375 mA
Lamp Current (Min)	168 mA
Starting Time (Nom)	0.5 s
Warm Up Time to 60% Light (Nom)	0.5 s
UL Type	Type B - bypass the ballast
Power Factor (Nom)	0.9
Voltage (Nom)	120-277 V
Temperature	
T-Ambient (Max)	45 °C
T-Ambient (Min)	-20 °C
T-Storage (Max)	65 °C
T-Storage (Min)	-40 °C
T-Case Maximum (Nom)	55 °C
Controls and Dimming	
Dimmable	No
Mechanical and Housing	
Bulb Material	Glass

# T8

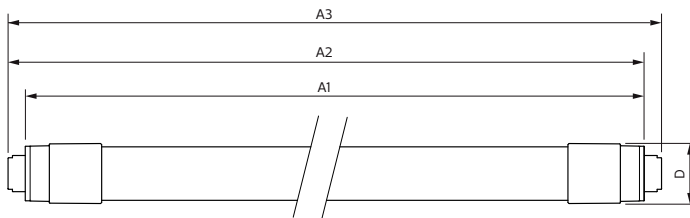
Product Length	96 in
Bulb Shape	Tube, double-ended
<b>Approval and Application</b>	
Energy Saving Product	Yes
Approbation Marks	RoHS compliance UL certificate DLC compliance
Energy Consumption kWh/1000 h	- kWh

## Product Data

Order product name	44T8HO/COR/96-850/MF54/G/R17d 10/1
--------------------	------------------------------------

EAN/UPC - Product	046677545291
Order code	545293
Numerator - Quantity Per Pack	1
Numerator - Packs per outer box	10
Material Nr. (12NC)	929002014304
Net Weight (Piece)	0.740 kg
Model Number	9290020143

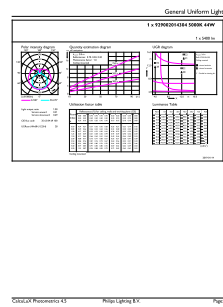
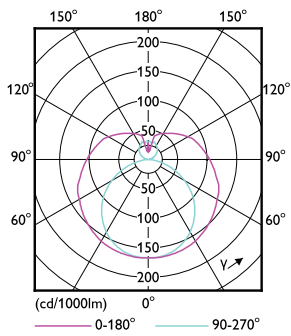
## Dimensional drawing



Product	D1	D2	A1	A2	A3
44T8HO/COR/96-850/ MF54/G/R17d 10/1	28 mm	27.8 mm	2369.8 mm	2378.7 mm	2387.8 mm

## TLED MF CorePro 8ft 5400lm R17d 5000K

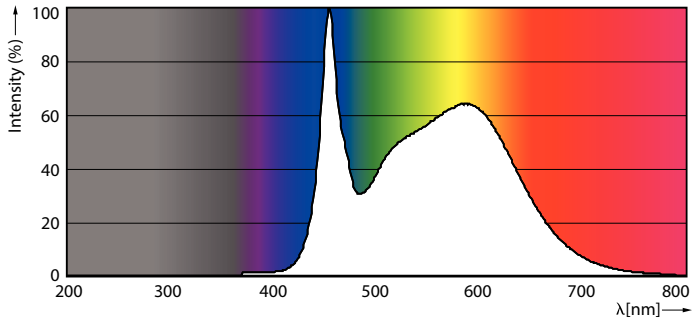
## Photometric data



## LEDtube FA8 4000K 240D

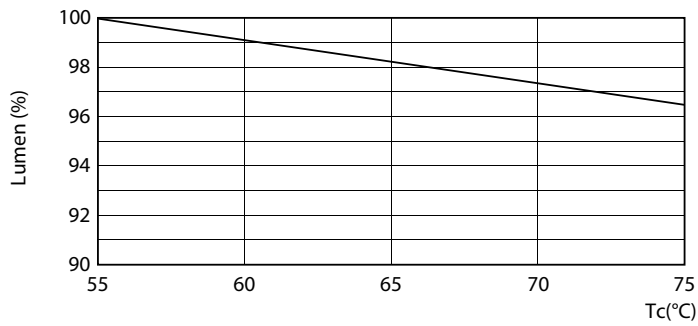
## LEDtube R17D 5000K 240D

Photometric data

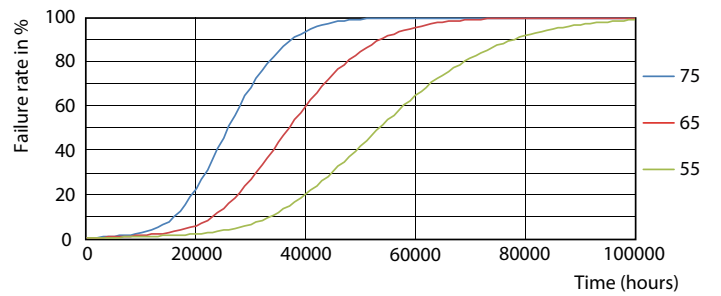


LEDtube FA8 5000K 240D

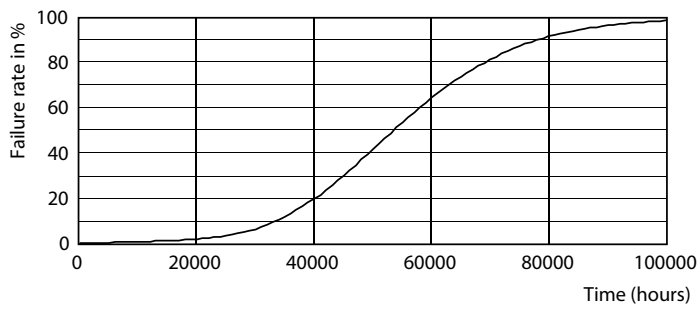
Lifetime



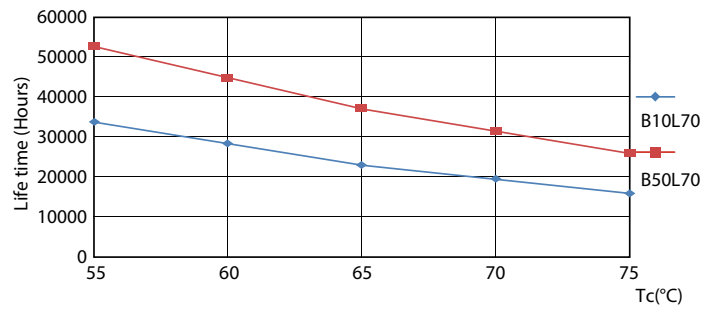
LEDtube R17D 4000K 240D LumenVsTc



LEDtube R17D 4000K 240D FailureRate



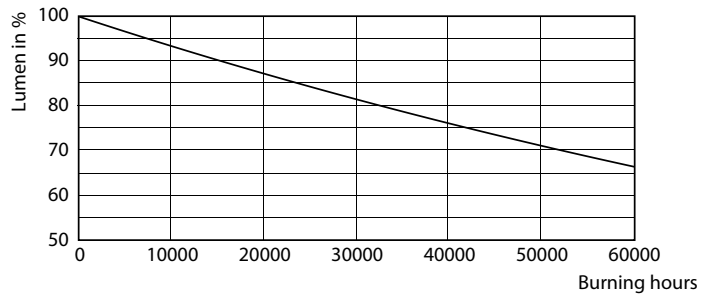
LEDtube FA8 4000K 240D



LEDtube R17D 4000K 240D LifetimeVsTc

# T8

## Lifetime



LEDtube FA8 4000K 240D

