



T8

34T8/COR/96-840/MF42/G/FA8 10/1

Our TLEDs are available in InstantFit (Type A / Type C) or MainsFit (Ballast bypass / Type B) versions. The InstantFit lamps work on a broad variety of ballasts and LED drivers. Only InstantFit has over 15,000 lamp & ballast combinations delivering even light output, energy savings and a long lifetime. Our MainsFit products feature a double-ended design, simplifying installation while a proprietary safety circuit minimizes a shock risk. Lamp sizes range from 2-foot to 8-foot and U-bend with a variety of lumen outputs.

Product data

General Information	
Base	FA8 [FA8]
EU RoHS compliant	Yes
Nominal Lifetime (Nom)	50000 h
Switching Cycle	50000X
Light Technical	
Color Code	841 [CCT of 4100K (841)]
Beam Angle (Nom)	240 °
Initial lumen (Nom)	4200 lm
Color Designation	Cool White (CW)
Correlated Color Temperature (Nom)	4000 K
Luminous Efficacy (rated) (Nom)	123.00 lm/W
Color Consistency	<6
Color Rendering Index (Nom)	82
LLMF At End Of Nominal Lifetime (Nom)	70 %
Operating and Electrical	
Input Frequency	50 to 60 Hz
Power (Rated) (Nom)	34 W

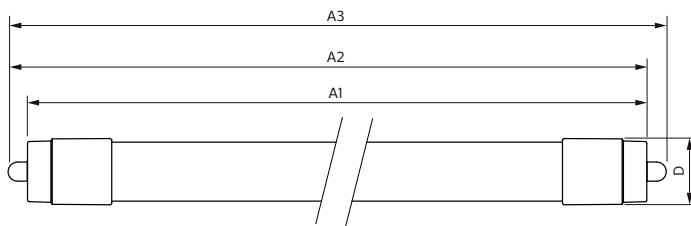
Lamp Current (Max)	290 mA
Lamp Current (Min)	133 mA
Starting Time (Nom)	0.5 s
Warm Up Time to 60% Light (Nom)	0.5 s
UL Type	Type B - bypass the ballast
Power Factor (Nom)	0.9
Voltage (Nom)	120-277 V
Temperature	
T-Ambient (Max)	45 °C
T-Ambient (Min)	-20 °C
T-Storage (Max)	65 °C
T-Storage (Min)	-40 °C
T-Case Maximum (Nom)	45 °C
Controls and Dimming	
Dimmable	No
Mechanical and Housing	
Bulb Material	Glass

T8

Product Length	96 in
Bulb Shape	Tube, double-ended
Approval and Application	
Energy Saving Product	Yes
Approbation Marks	RoHS compliance UL certificate DLC compliance
Energy Consumption kWh/1000 h	- kWh
Product Data	
Order product name	34T8/COR/96-840/MF42/G/FA8 10/1

EAN/UPC - Product	046677545260
Order code	545269
Numerator - Quantity Per Pack	1
Numerator - Packs per outer box	10
Material Nr. (12NC)	929002014004
Net Weight (Piece)	0.740 kg
Model Number	9290020140

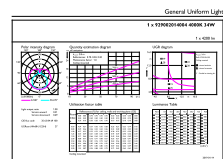
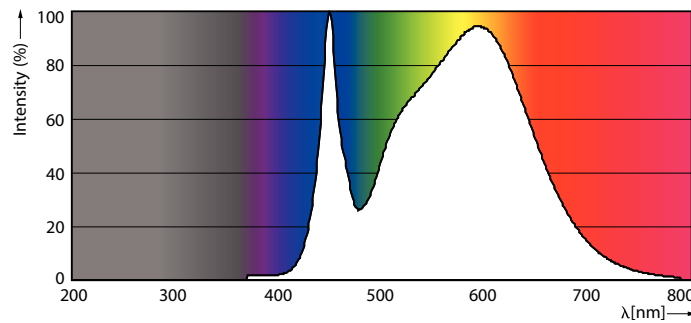
Dimensional drawing



Product	D1	D2	A1	A2	A3
34T8/COR/96-840/ MF42/G/FA8 10/1	28 mm	27.9 mm	2369.8 mm	2378.7 mm	2387.8 mm

TLED MF CorePro 8ft 4200lm FA8 4000K

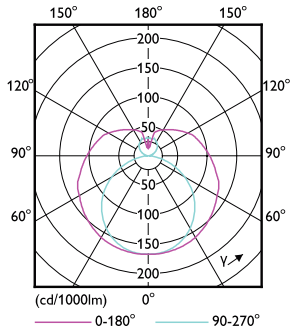
Photometric data



LEDtube FA8 4000K 240D

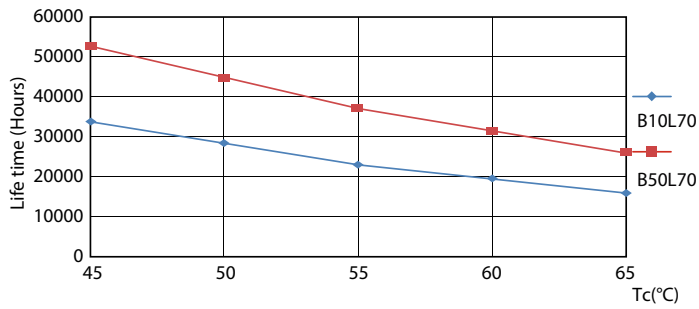
LEDtube FA8 4000K 240D

Photometric data

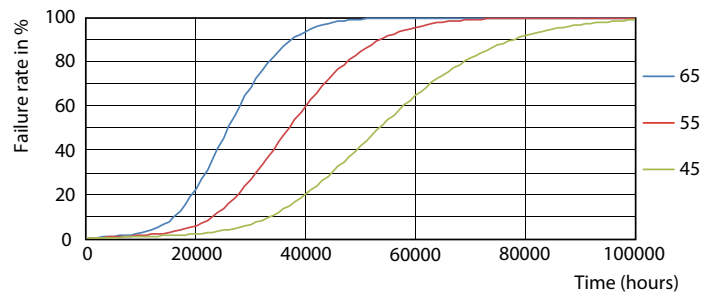


LEDtube FA8 4000K 240D

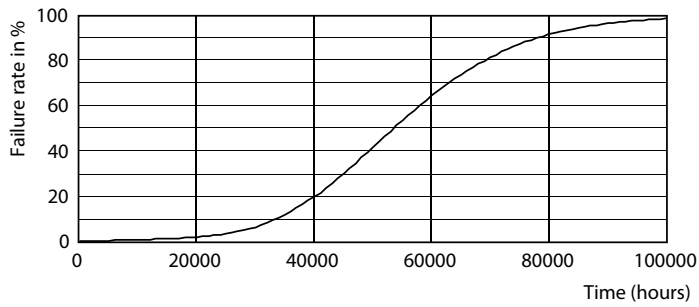
Lifetime



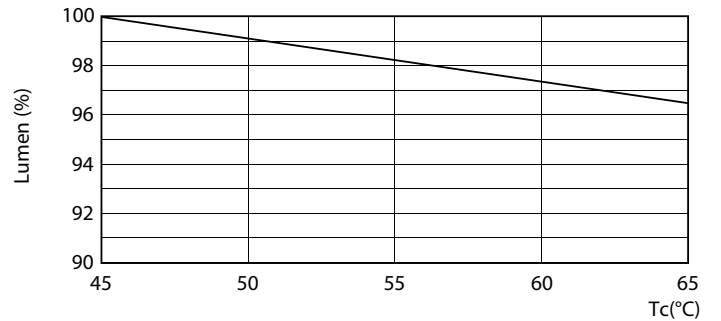
LEDtube FA8 4000K 240D LifetimeVsTc



LEDtube FA8 4000K 240D FailureRate



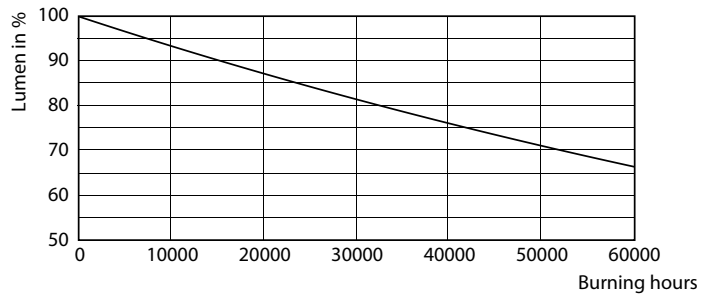
LEDtube FA8 4000K 240D



LEDtube FA8 4000K 240D LumenVsTc

T8

Lifetime



LEDtube FA8 4000K 240D

