



T8

10T8/COR/48-850/IF16/G/DIM 10/1

Our TLEDs are available in InstantFit (Type A / Type C) or MainsFit (Ballast bypass / Type B) versions. The InstantFit lamps work on a broad variety of ballasts and LED drivers. Only InstantFit has over 15,000 lamp & ballast combinations delivering even light output, energy savings and a long lifetime. Our MainsFit products feature a double-ended design, simplifying installation while a proprietary safety circuit minimizes a shock risk. Lamp sizes range from 2-foot to 8-foot and U-bend with a variety of lumen outputs.

Product data

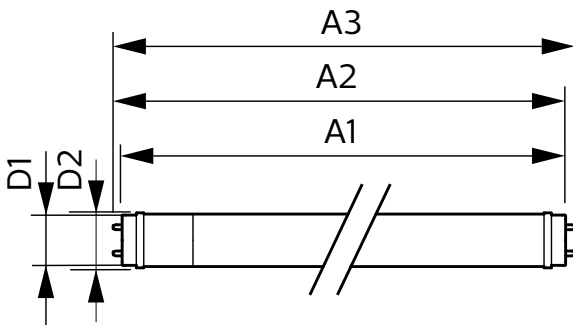
General information		Lamp Current (Max)		260 mA	
Base	G13 [Medium Bi-Pin Fluorescent]	Lamp Current (Min)	100 mA		
EU RoHS compliant	Yes	Starting Time (Nom)	0.5 s		
Nominal Lifetime (Nom)	50000 h	Warm Up Time to 60% Light (Nom)	0.5 s		
Switching Cycle	50000X	UL Type	Type A - works on ballast		
Light technical		Power Factor (Nom)	0.9		
Color Code	850 [CCT of 5000K]	Voltage (Nom)	120-277, 347 V		
Beam Angle (Nom)	240 °	Temperature			
Initial lumen (Nom)	1600 lm	T-Ambient (Max)	113 °F		
Color Designation	Daylight	T-Ambient (Min)	-4 °F		
Correlated Color Temperature (Nom)	5000 K	T-Storage (Max)	149 °F		
Luminous Efficacy (rated) (Nom)	160.00 lm/W	T-Storage (Min)	-40 °F		
Color Consistency	<5	T-Case Maximum (Nom)	122 °F		
Color Rendering Index (Nom)	82	Controls and dimming			
LLMF At End Of Nominal Lifetime (Nom)	70 %	Dimmable	Yes		
Operating and electrical		Mechanical and housing			
Input Frequency	25000-105000 Hz	Bulb Material	Glass		
Power (Rated) (Nom)	10 W				

T8

Product Length	48 in
Bulb Shape	Tube, double-ended
Approval and application	
Energy Saving Product	Yes
Approbation Marks	RoHS compliance UL certificate DLC compliance
Energy Consumption kWh/1000 h	- kWh
Product data	
Order product name	10T8/COR/48-850/IF16/G/DIM 10/1

EAN/UPC - Product	046677553241
Order code	553248
Numerator - Quantity Per Pack	1
Numerator - Packs per outer box	10
Material Nr. (12NC)	929001991834
Copy Net Weight (Piece)	0.507 lb
Model Number	9290019918

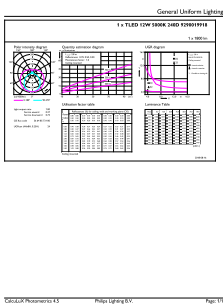
Dimensional drawing



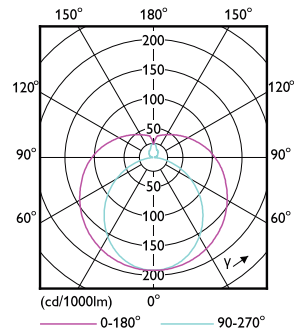
10T8/COR/48-850/IF16/G/DIM 10/1

Product	D1	D2	A1	A2	A3
10T8/COR/48-850/ IF16/G/DIM 10/1	1-1/16 in	1-1/8 in	47-3/16 in	47-1/2 in	47-3/4 in

Photometric data

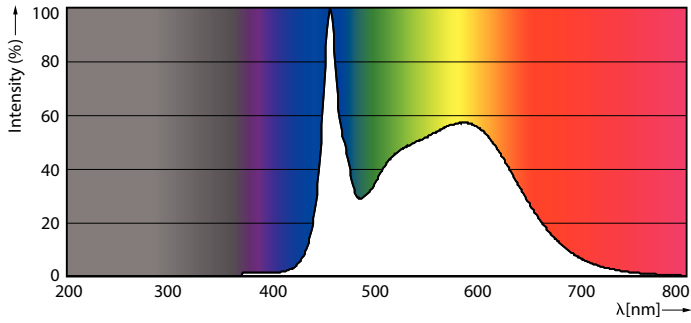


LEDtube 10W G13 850 ND



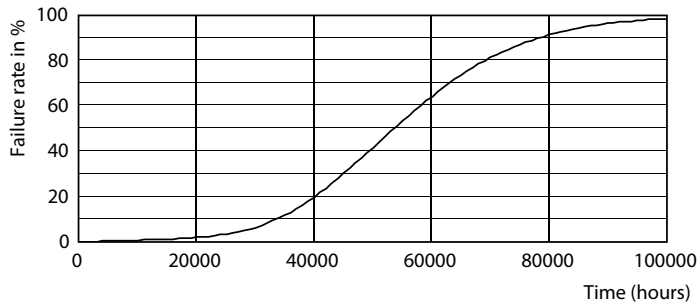
LEDtube 10W G13 850 ND

Photometric data

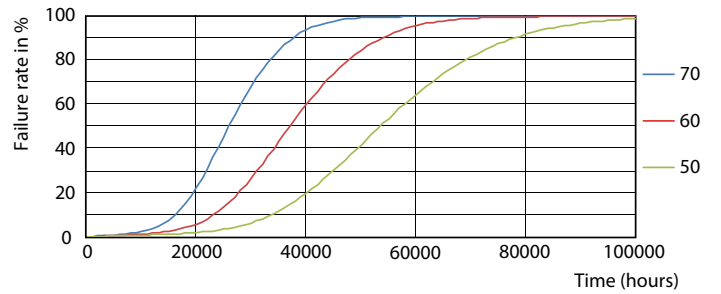


LEDtube 10W G13 850 ND

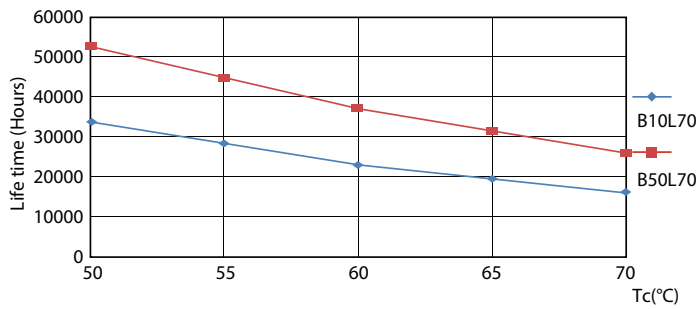
Lifetime



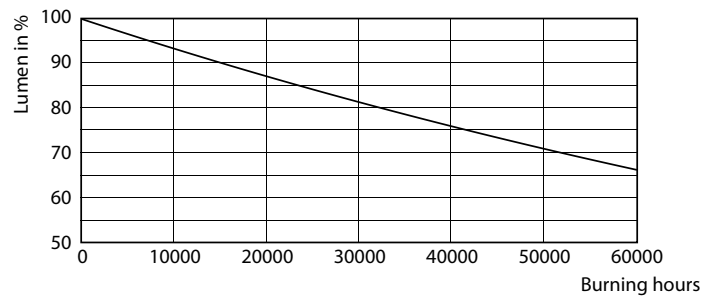
LEDtube 10W G13 850 ND



LEDtube 10W G13 850 ND



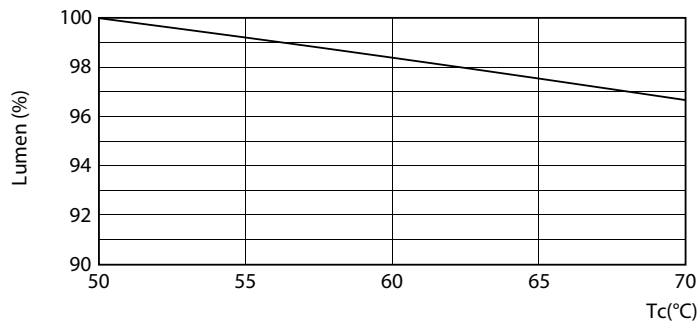
LEDtube 10W G13 850 ND



LEDtube 10W G13 850 ND

T8

Lifetime



LEDtube 10W G13 850 ND

