



T8

8.5T8/COR/24-840/MF11/G 10/1

Our TLEDs are available in InstantFit (Type A / Type C) or MainsFit (Ballast bypass / Type B) versions. The InstantFit lamps work on a broad variety of ballasts and LED drivers. Only InstantFit has over 15,000 lamp & ballast combinations delivering even light output, energy savings and a long lifetime. Our MainsFit products feature a double-ended design, simplifying installation while a proprietary safety circuit minimizes a shock risk. Lamp sizes range from 2-foot to 8-foot and U-bend with a variety of lumen outputs.

Product data

General information	
Base	G13 [Medium Bi-Pin Fluorescent]
EU RoHS compliant	Yes
Nominal Lifetime (Nom)	50000 h
Switching Cycle	50000X
Light technical	
Color Code	841 [CCT of 4100K (841)]
Beam Angle (Nom)	180 °
Initial lumen (Nom)	1150 lm
Color Designation	Cool White (CW)
Correlated Color Temperature (Nom)	4000 K
Luminous Efficacy (rated) (Nom)	135.00 lm/W
Color Consistency	<6
Color Rendering Index (Nom)	82
LLMF At End Of Nominal Lifetime (Nom)	70 %
Operating and electrical	
Input Frequency	50 to 60 Hz
Power (Rated) (Nom)	8.5 W

Lamp Current (Max)	75 mA
Lamp Current (Min)	36 mA
Starting Time (Nom)	0.9 s
Warm Up Time to 60% Light (Nom)	0.9 s
UL Type	Type B - bypass the ballast
Power Factor (Nom)	0.9
Voltage (Nom)	120-277 V
Temperature	
T-Ambient (Max)	113 °F
T-Ambient (Min)	-4 °F
T-Storage (Max)	149 °F
T-Storage (Min)	-40 °F
T-Case Maximum (Nom)	122 °F
Controls and dimming	
Dimmable	No
Mechanical and housing	
Bulb Material	Glass

T8

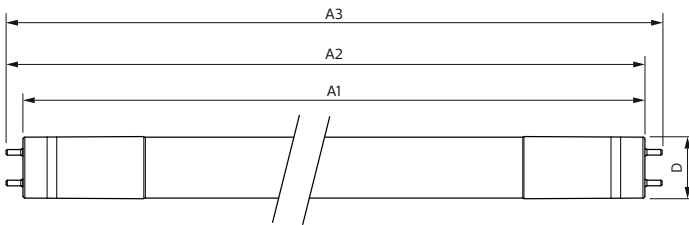
Product Length	24 in
Bulb Shape	Tube, double-ended
Approval and application	
Energy Saving Product	Yes
Approbation Marks	UL certificate RoHS compliance DLC compliance
Energy Consumption kWh/1000 h	- kWh
Energy Certifications	DLC Standard

Product data

Order product name	8.5T8/COR/24-840/MF11/G 10/1
--------------------	------------------------------

EAN/UPC - Product	046677535476
Order code	535476
Numerator - Quantity Per Pack	1
Numerator - Packs per outer box	10
Material Nr. (12NC)	929001934004
Copy Net Weight (Piece)	0.441 lb
Model Number	9290019340

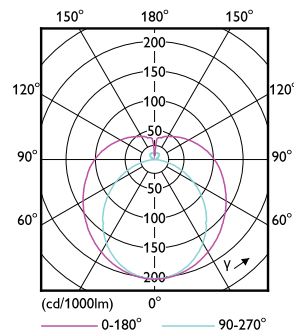
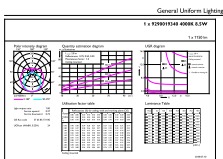
Dimensional drawing



Product	D	A1	A2	A3
8.5T8/COR/24-840/MF11/G 10/1	1-1/16 in	23-1/4 in	23-1/2 in	23-13/16 in

8.5T8/COR/24-840/MF11/G 10/1

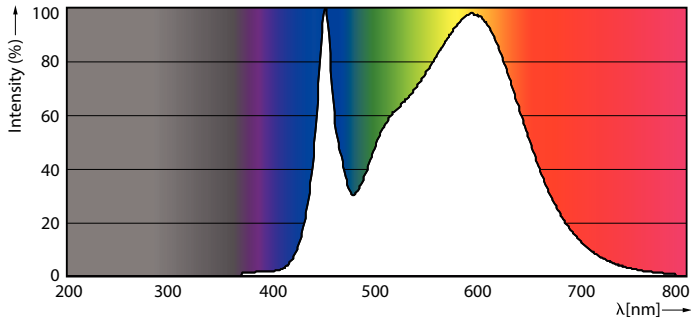
Photometric data



8.5W G13

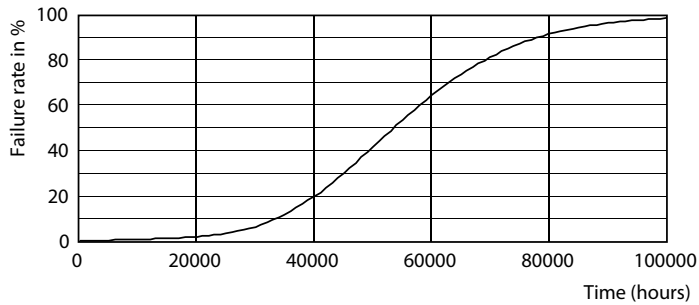
8.5W G13 840

Photometric data

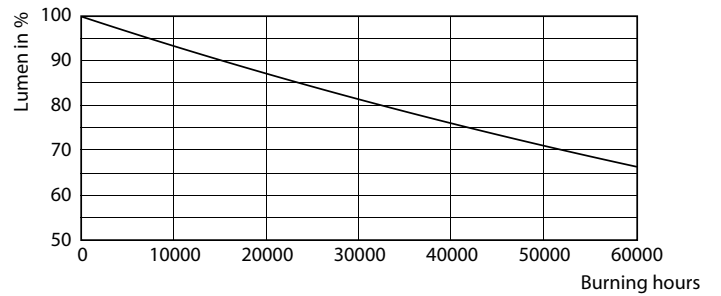


8.5W G13

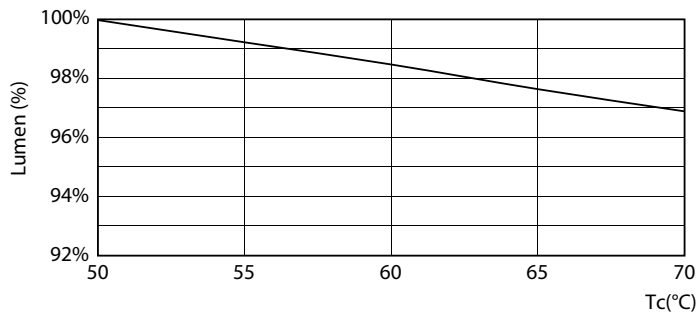
Lifetime



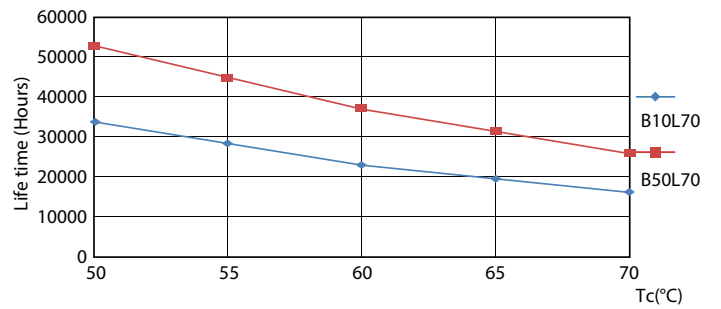
8.5W G13



8.5W G13

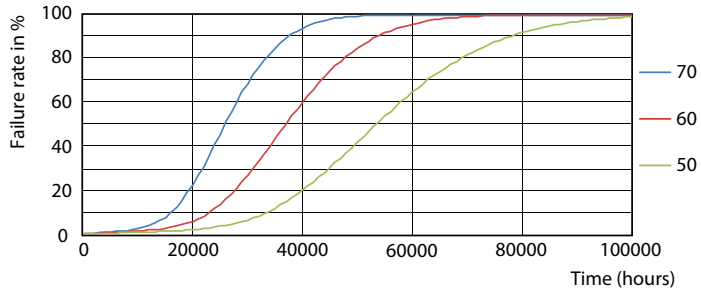


8.5W G13



8.5W G13

Lifetime



8.5W G13

