



T8

30T8/COR/96-840/IF42/G/FA8 10/1

Our TLEDs are available in InstantFit (Type A / Type C) or MainsFit (Ballast bypass / Type B) versions. The InstantFit lamps work on a broad variety of ballasts and LED drivers. Only InstantFit has over 15,000 lamp & ballast combinations delivering even light output, energy savings and a long lifetime. Our MainsFit products feature a double-ended design, simplifying installation while a proprietary safety circuit minimizes a shock risk. Lamp sizes range from 2-foot to 8-foot and U-bend with a variety of lumen outputs.

Product data

General information	
Base	FA8 [FA8]
EU RoHS compliant	Yes
Nominal Lifetime (Nom)	50000 h
Switching Cycle	50000X
Light technical	
Color Code	841 [CCT of 4100K (841)]
Beam Angle (Nom)	240 °
Initial lumen (Nom)	4200 lm
Color Designation	Cool White (CW)
Correlated Color Temperature (Nom)	4000 K
Luminous Efficacy (rated) (Nom)	140.00 lm/W
Color Consistency	ANSI
Color Rendering Index (Nom)	80
LLMF At End Of Nominal Lifetime (Nom)	70 %
Operating and electrical	
Input Frequency	35000-150000 Hz
Power (Rated) (Nom)	30 W

Lamp Current (Max)	350 mA
Lamp Current (Min)	100 mA
Starting Time (Nom)	0.5 s
Warm Up Time to 60% Light (Nom)	0.5 s
UL Type	Type A - works on ballast
Power Factor (Nom)	0.9
Voltage (Nom)	200-500 V
Temperature	
T-Ambient (Max)	45 °C
T-Ambient (Min)	-20 °C
T-Storage (Max)	65 °C
T-Storage (Min)	-40 °C
T-Case Maximum (Nom)	45 °C
Controls and dimming	
Dimmable	No
Mechanical and housing	
Bulb Material	Glass

T8

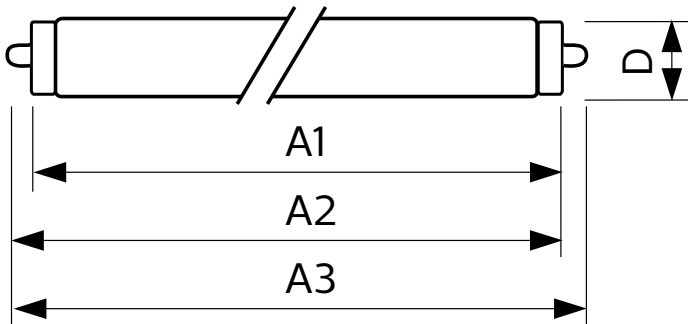
Product Length	96 in
Bulb Shape	Tube, double-ended
Approval and application	
Energy Saving Product	Yes
Approbation Marks	UL certificate RoHS compliance DLC compliance
Energy Consumption kWh/1000 h	- kWh
Energy Certifications	DLC Standard

EAN/UPC - Product	046677533021
Order code	533026
Numerator - Quantity Per Pack	1
Numerator - Packs per outer box	10
Material Nr. (12NC)	929001897304
Net Weight (Piece)	0.540 kg
Model Number	9290018973

Product data

Order product name	30T8/COR/96-840/IF42/G/FA8 10/1
--------------------	---------------------------------

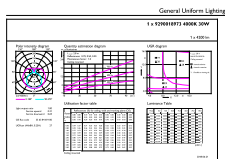
Dimensional drawing



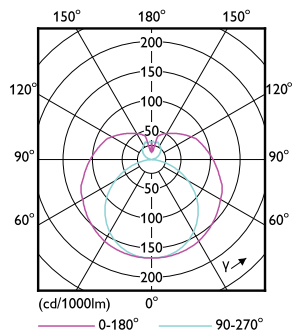
30T8/COR/96-840/IF42/G/FA8 10/1

Product	D1	D2	A1	A2	A3
30T8/COR/96-840/ IF42/G/FA8 10/1	25.5 mm	28 mm	2366.9 mm	2375.8 mm	2384.7 mm

Photometric data

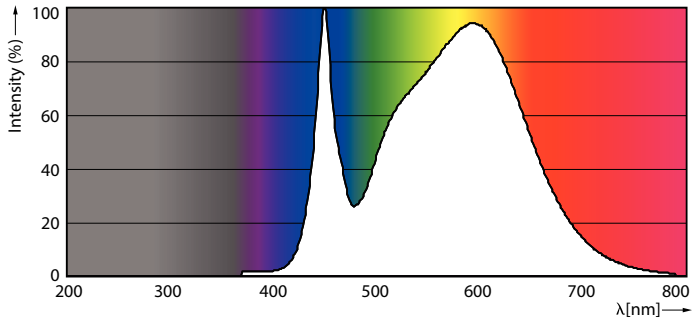


30W FA8 840 4000K



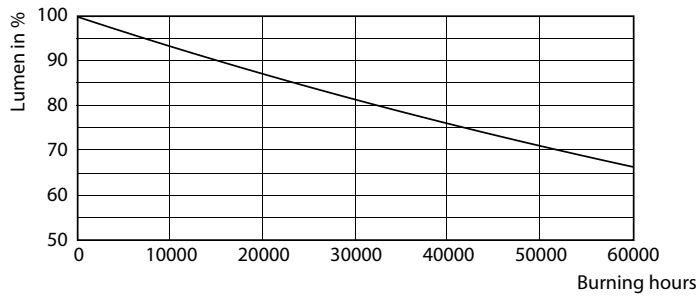
30W FA8 830 3000K

Photometric data

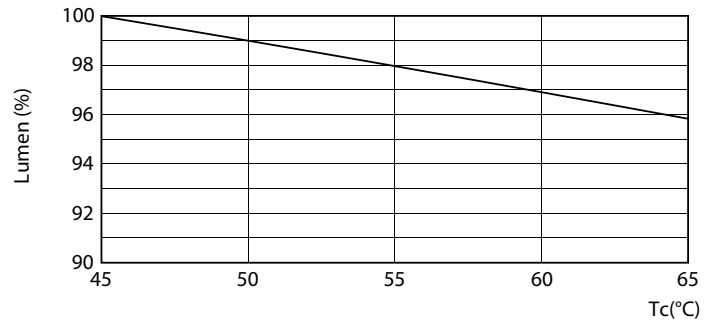


30W FA8

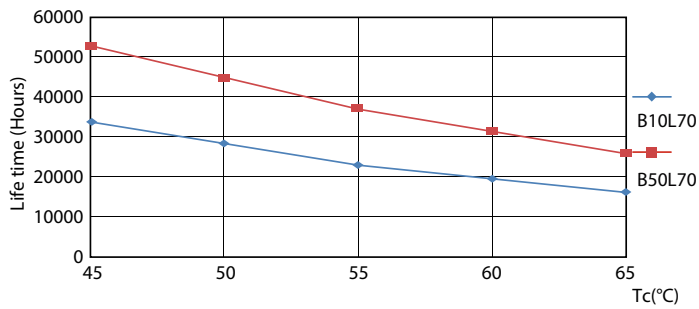
Lifetime



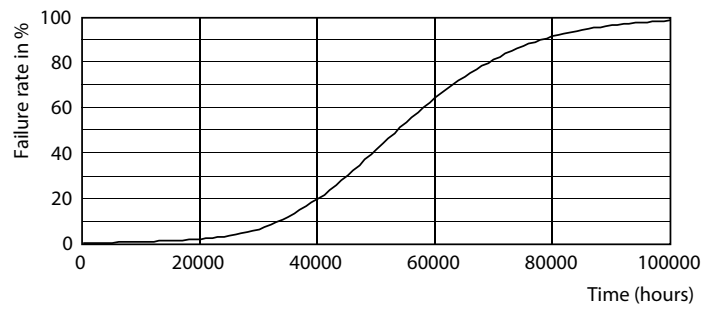
30W FA8



30W FA8



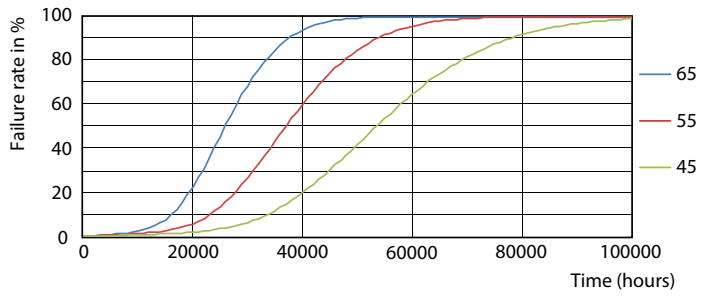
30W FA8



30W FA8

T8

Lifetime



30W FA8

