



# PL-L

## 16.5PL-L/COR/22-840/IF23/P/4P/DIM 10/1

Philips InstantFit LED lamps make the transition to LED from CFL lamps as simple as replacing a lamp. With a wide array of color temperatures, the InstantFit LED lamps can quickly and effectively replace compact fluorescent lamps.

### Product data

General Information		Wattage Equivalent	
Cap-Base	2G11 [2G11]		40 W
Nominal lifetime	50,000 hour(s)	Starting Time (Nom)	0.5 s
Switching Cycle	50,000	Warm-up time to 60% light	0.5 s
Lighting Technology	LED	Power Factor (Fraction)	0.9
EU RoHS compliant	Yes	Voltage (Nom)	70-110 V
		UL Type	UL Type A
Light Technical		Temperature	
Color Code	840 [CCT of 4000K]	Ambient temperature range	-4 °F to 113 °F
Beam Angle (Nom)	160 degree(s)	T-Case Maximum (Nom)	167 °F
Luminous Flux	2,300 lm		
Color Designation	Cool White (CW)	Controls and Dimming	
Correlated Color Temperature (Nom)	4000 K	Dimmable	Only with specific dimmers
Luminous Efficacy (rated) (Nom)	139.00 lm/W		
Color Consistency	<6	Mechanical and Housing	
Color rendering index (CRI)	82	Bulb Finish	Frosted
LLMF At End Of Nominal Lifetime (Nom)	70 %	Bulb Material	Plastic
		Product Length	22-7/8 inch
		Bulb Shape	PL-L
Operating and Electrical		Approval and Application	
Line Frequency	40000-160000 Hz	Energy Saving Product	Yes
Input Frequency	40000-160000 Hz	Approval Marks	UL certificate RoHS compliance DLC compliance
Power Consumption	16.5 W		
Lamp Current (Max)	400 mA		
Lamp Current (Min)	200 mA		

# PL-L

Energy Consumption kWh/1000 h	- kWh
Energy Certifications	DLC Standard

## Application Conditions

can it be used in closed luminaires	Yes
-------------------------------------	-----

## Product Data

Order product name	16.5PL-L/COR/22-840/IF23/P/4P/DIM 10/1
Full product name	16.5PL-L/COR/22-840/IF23/P/4P/DIM 10/1

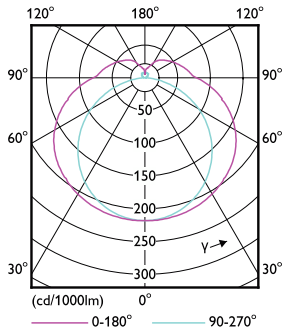
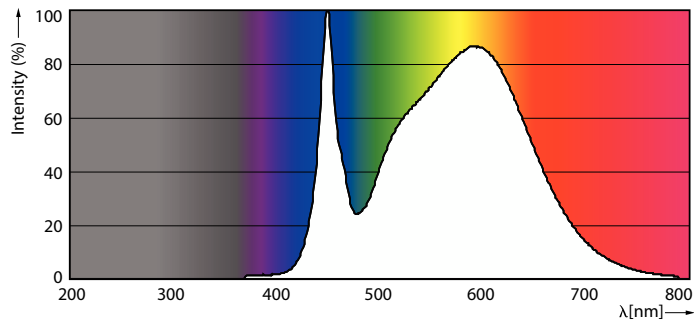
Order code	532911
Material Nr. (12NC)	929001893704
Numerator - Quantity Per Pack	1
EAN/UPC - Product/Case	046677532918
Numerator - Packs per outer box	10
EAN/UPC - Case	50046677532913

## Dimensional drawing



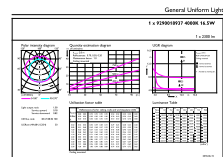
Product	D	D1	A1	A2	A3
16.5PL-L/COR/22-840/IF23/P/4P/DIM 10/1	1-5/8 inch	13/16 inch	19-3/4 inch	22-1/4 inch	22-1/2 inch

## Photometric data

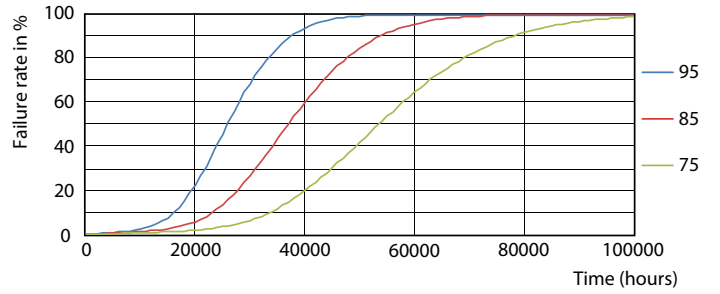
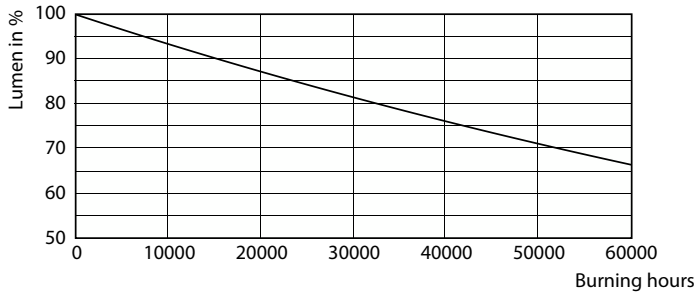


Spectral Power Distribution Colour - 16.5PL-L/COR/22-840/IF23/P/4P/DIM 10/1

Light Distribution Diagram - 16.5PL-L/COR/22-840/IF23/P/4P/DIM 10/1

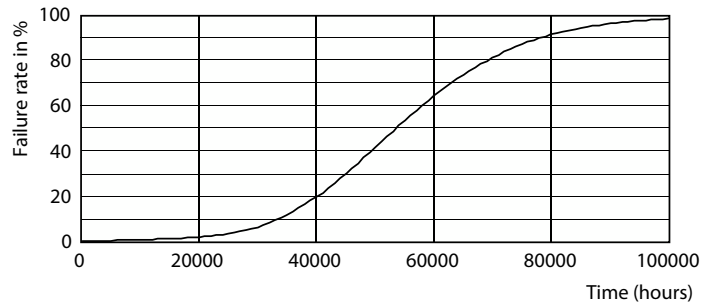
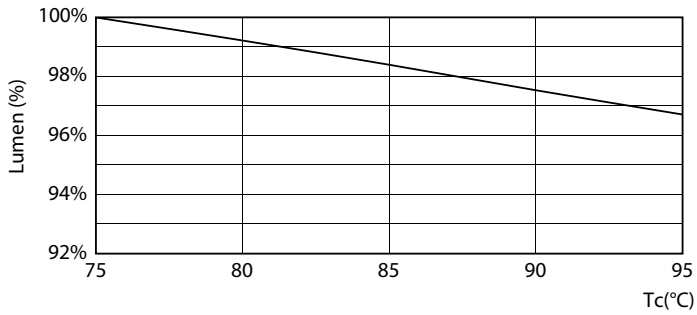


Lifetime



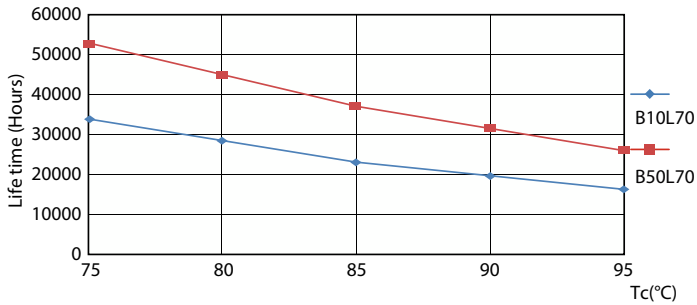
Lumen Maintenance Diagram - 16.5PL-L/COR/22-840/IF23/P/4P/DIM 10/1

Life Expectancy Diagram - 16.5PL-L/COR/22-840/IF23/P/4P/DIM 10/1



Lumen Maintenance Diagram - 16.5PL-L/COR/22-840/IF23/P/4P/DIM 10/1

Life Expectancy Diagram - 16.5PL-L/COR/22-840/IF23/P/4P/DIM 10/1



Life Expectancy Diagram - 16.5PL-L/COR/22-840/IF23/P/4P/DIM 10/1

