



# PL-L

## 16.5PL-L/COR/22-835/IF22/P/4P/DIM 10/1

Philips InstantFit LED lamps make the transition to LED from CFL lamps as simple as replacing a lamp. With a wide array of color temperatures, the InstantFit LED lamps can quickly and effectively replace compact fluorescent lamps.

### Product data

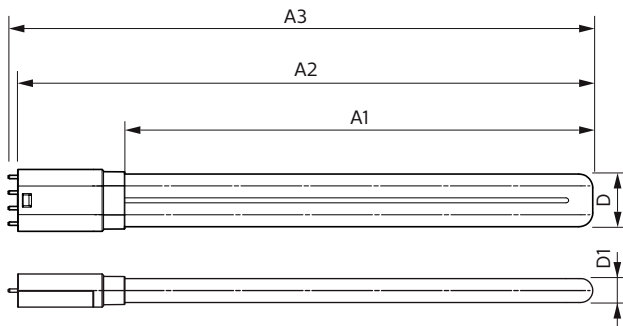
General Information		UL Type	
Base	2G11 [ 2G11]	Power Factor (Nom)	Type A - works on ballast
EU RoHS compliant	Yes	Voltage (Nom)	0.9
Nominal Lifetime (Nom)	50000 h		70-110 V
Switching Cycle	50000X		
Light Technical		Temperature	
Color Code	835 [ CCT of 3500K]	T-Ambient (Max)	45 °C
Beam Angle (Nom)	160 °	T-Ambient (Min)	-20 °C
Initial lumen (Nom)	2200 lm	T-Storage (Max)	65 °C
Color Designation	White (WH)	T-Storage (Min)	-40 °C
Correlated Color Temperature (Nom)	3500 K	T-Case Maximum (Nom)	75 °C
Luminous Efficacy (rated) (Nom)	133.00 lm/W	Controls and Dimming	
Color Consistency	<6	Dimmable	No
Color Rendering Index (Nom)	82	Mechanical and Housing	
LLMF At End Of Nominal Lifetime (Nom)	70 %	Product Length	23 in
		Bulb Shape	Tube, single-ended
Operating and Electrical		Approval and Application	
Input Frequency	40000-160000 Hz	Energy Saving Product	Yes
Power (Rated) (Nom)	16.5 W	Approbation Marks	UL certificate RoHS compliance DLC compliance
Lamp Current (Max)	400 mA	Energy Consumption kWh/1000 h	- kWh
Lamp Current (Min)	200 mA		
Starting Time (Nom)	0.5 s		
Warm Up Time to 60% Light (Nom)	0.5 s		

# PL-L

Energy Certifications	DLC Standard
<b>Product Data</b>	
Order product name	16.5PL-L/COR/22-835/IF22/P/4P/DIM 10/1
EAN/UPC - Product	046677532901
Order code	532903
Numerator - Quantity Per Pack	1

Numerator - Packs per outer box	10
Material Nr. (12NC)	929001893604
Net Weight (Piece)	0.170 kg
Model Number	9290018936

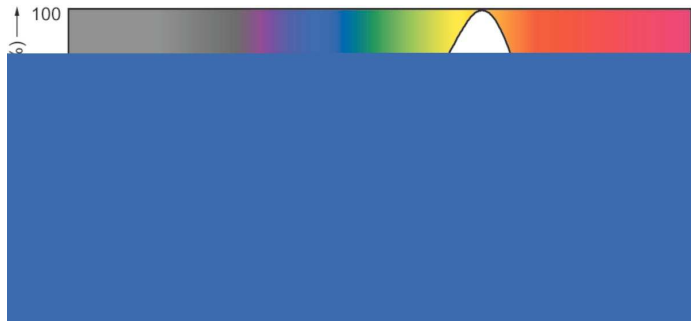
## Dimensional drawing



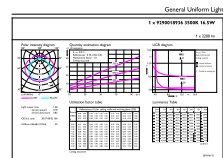
LED PLL MasterClass 2200lm 3500K

Product	D	D1	A1	A2	A3
16.5PL-L/COR/22-835/IF22/P/4P/DIM 10/1	40.6 mm	20 mm	501 mm	564 mm	570.6 mm

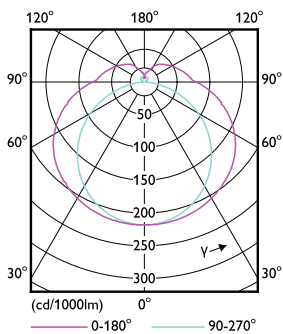
## Photometric data



LEDtube 16.5 W, 835, G13, T8, UHO

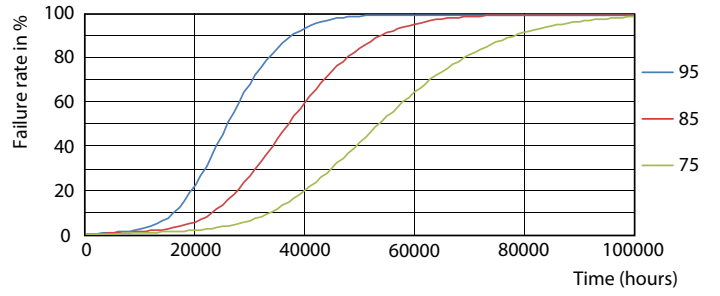
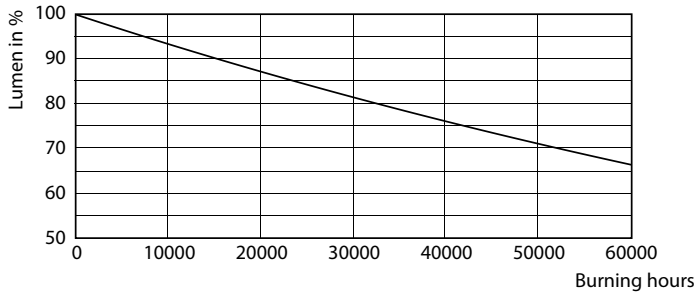


16-5W 2G11 835 3500K

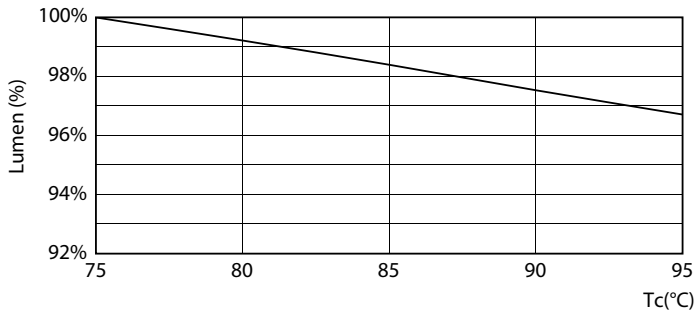


16-5W 2G11 830 3000K

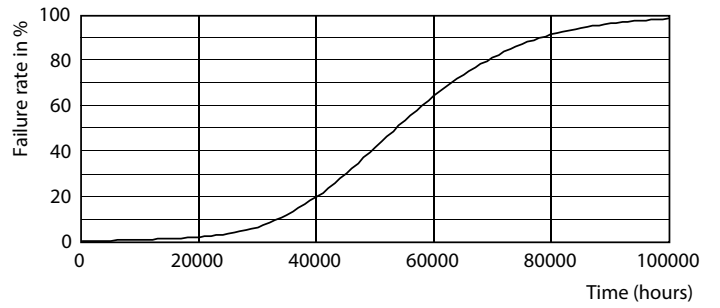
Lifetime



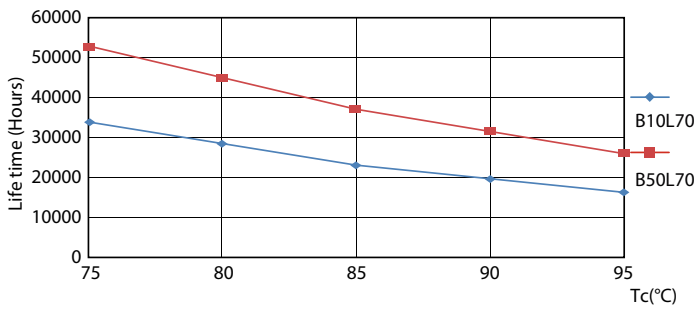
16-5W 2G11



16-5W 2G11



16-5W 2G11



16-5W 2G11

16-5W 2G11

