



PL-C/T

5PL-C/LED/13V/840/IF5/P/2P 20/1

Philips PLED 4-pin & 2-pin lamps are an affordable LED solution to replace compact fluorescent lamps. The product provides a natural lighting effect for use in many lighting applications, and provides instant energy savings, making them an environmentally-friendly solution. Available as replacements for 13W, 26W and 32W compact fluorescent lamps.

Product data

General Information	
Base	GX23-2 [GX23-2]
EU RoHS compliant	Yes
Nominal Lifetime (Nom)	50000 h
Switching Cycle	50000X
Light Technical	
Color Code	841 [CCT of 4100K (841)]
Beam Angle (Nom)	150 °
Initial lumen (Nom)	580 lm
Color Designation	Cool White (CW)
Correlated Color Temperature (Nom)	4000 K
Luminous Efficacy (rated) (Nom)	116.00 lm/W
Color Consistency	<6
Color Rendering Index (Nom)	82
LLMF At End Of Nominal Lifetime (Nom)	70 %
Operating and Electrical	
Input Frequency	50 to 60 Hz
Power (Rated) (Nom)	5 W
Lamp Current (Max)	50 mA
Lamp Current (Min)	15 mA

Starting Time (Nom)	0.5 s
Warm Up Time to 60% Light (Nom)	0.5 s
UL Type	Type A - works on ballast
Power Factor (Nom)	0.9
Voltage (Nom)	120-277 V
Temperature	
T-Ambient (Max)	45 °C
T-Ambient (Min)	-20 °C
T-Storage (Max)	65 °C
T-Storage (Min)	-40 °C
T-Case Maximum (Nom)	70 °C
Controls and Dimming	
Dimmable	No
Mechanical and Housing	
Bulb Material	Plastic
Product Length	4 in
Bulb Shape	Tube, single-ended

PL-C/T

Approval and Application

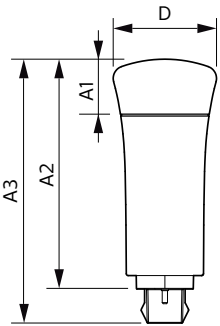
Energy Saving Product	Yes
Approbation Marks	UL certificate RoHS compliance
Energy Consumption kWh/1000 h	- kWh

Product Data

Order product name	5PL-C/LED/13V/840/IF5/P/2P 20/1
EAN/UPC - Product	046677532383

Order code	532382
Numerator - Quantity Per Pack	1
Numerator - Packs per outer box	20
Material Nr. (12NC)	929001885204
Net Weight (Piece)	0.058 kg
Model Number	9290018852

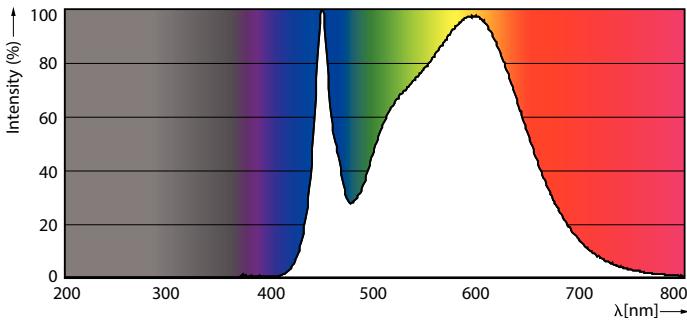
Dimensional drawing



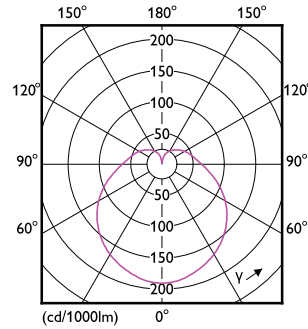
PLED PLC-V 5-13W 580lm 4000K G24d

Product	D	A1	A2	A3
5PL-C/LED/13V/840/IF5/P/2P 20/1	45.7 mm	24.6 mm	101.6 mm	117.6 mm

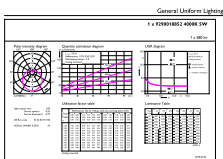
Photometric data



LEDtube PLC 13V 5W GX23-2 840 15D ND

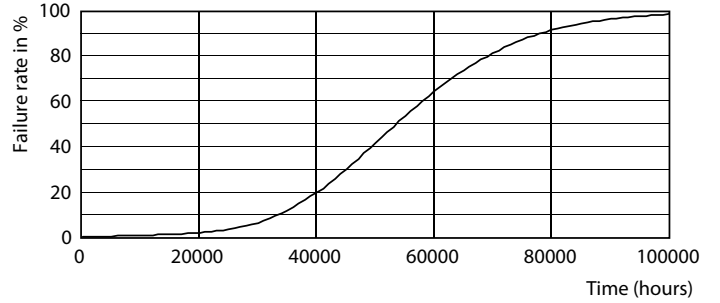
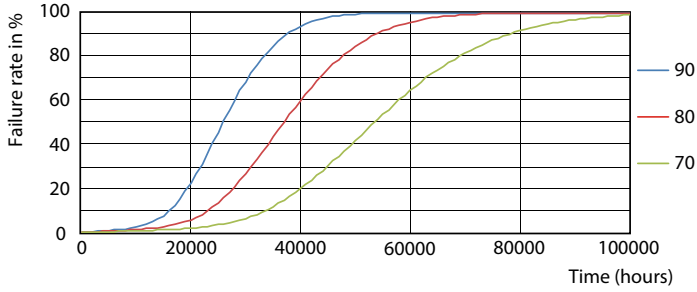


LEDtube PLC 13V 5W GX23-2 827 15D ND



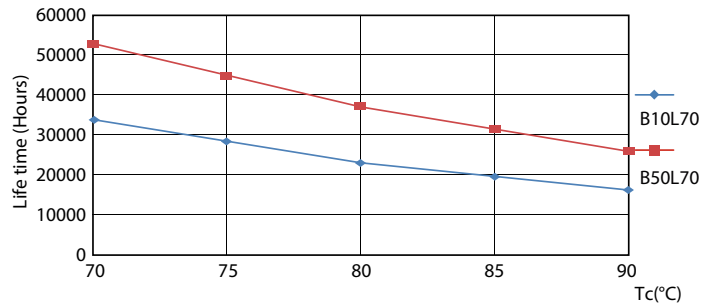
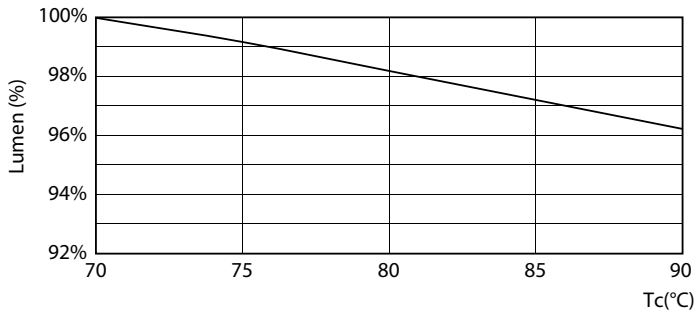
LEDtube PLC 13V 5W GX23-2 840 15D ND

Lifetime



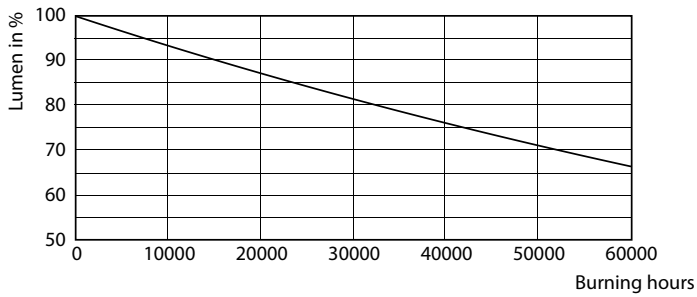
LEDtube PLC 13H 5W GX23-2 827 15D ND

LEDtube PLC 13H 5W GX23-2 827 15D ND



LEDtube PLC 13V 5W GX23-2 827 15D ND

LEDtube PLC 13H 5W GX23-2 827 15D ND



LEDtube PLC 13H 5W GX23-2 827 15D ND

