



T5

14T5HE/46-835/IF20/G/DIM 10/1

Philips T5 LED tubes offer an affordable, energy saving retrofit solution. The T5 lamps have been engineered to withstand the test of time with a 50,000-hour lifetime and a limited 5-year warranty to back it up. The lighting performance effectively replaces conventional fluorescent T5 HO or T5 HE lamps. Available in either InstantFit (Type A or Type C) or MainsFit (Type B / Ballast bypass), Philips T5 TLEDs provide a variety of options for any application.

Product data

General Information		Temperature	
Cap-Base	G5 [G5]	Input Frequency	40000-110000 Hz
EU RoHS compliant	Yes	Power Consumption	14 W
Nominal lifetime	50,000 hour(s)	Wattage Equivalent	28 W
Switching Cycle	50,000	Starting Time (Nom)	0.5 s
Lighting Technology	LED	Warm-up time to 60% light	0.5 s
Brand	Philips	Power Factor (Fraction)	0.9
		Voltage (Nom)	70-105 V
Light Technical		Controls and Dimming	
Color Code	835 [CCT of 3500K]	Dimmable	Yes
Beam Angle (Nom)	200 degree(s)		
Luminous Flux	2,000 lumen	Mechanical and Housing	
Color Designation	White (WH)	Bulb Finish	Frosted
Correlated Color Temperature (Nom)	3500 K	Bulb Material	Glass
Luminous Efficacy (rated) (Nom)	142.00 lm/W	Product Length	47-1/4 inch
Color Consistency	<6	Bulb Shape	Tube, double-ended
Color rendering index (CRI)	82		
LLMF At End Of Nominal Lifetime (Nom)	70 %		
Operating and Electrical			
Line Frequency	40000-110000 Hz		

T5

Approval and Application

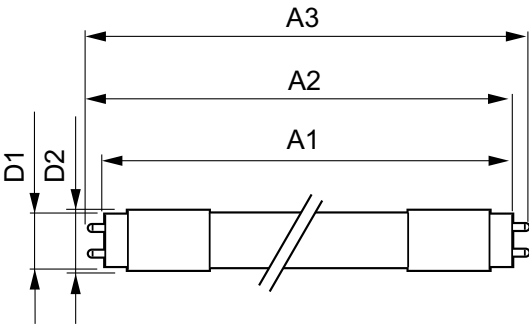
Energy Saving Product	Yes
Approval Marks	UL certificate RoHS compliance DLC compliance
Energy Consumption kWh/1000 h	- kWh
Energy Certifications	DLC Standard

Product Data

Order product name	14T5HE/46-835/IF20/G/DIM 10/1
--------------------	-------------------------------

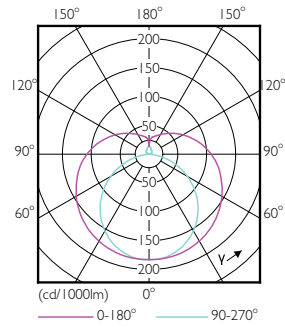
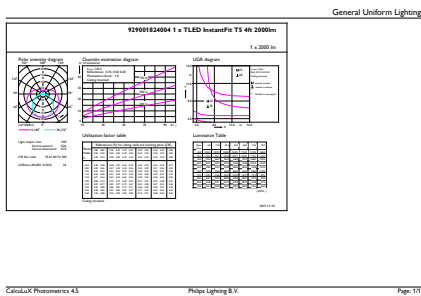
Order code	476507
Numerator - Quantity Per Pack	1
Numerator - Packs per outer box	10
Material number (12NC)	929001824004
Net weight	0.146 kg
Full product name	14T5HE/46-835/IF20/G/DIM 10/1
EAN/UPC - Case	50046677476507

Dimensional drawing

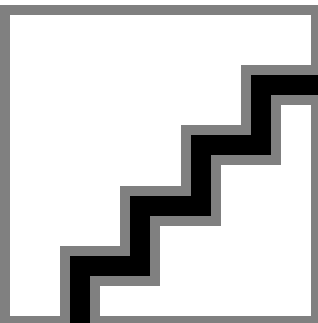


Product	D1	D2	A1	A2	A3
14T5HE/46-835/IF20/G/DIM 10/1	15.3 mm	18.4 mm	1,147.8 mm	1,154.9 mm	1,162 mm

Photometric data

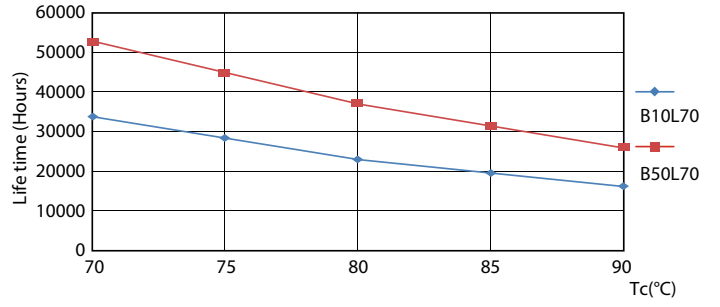
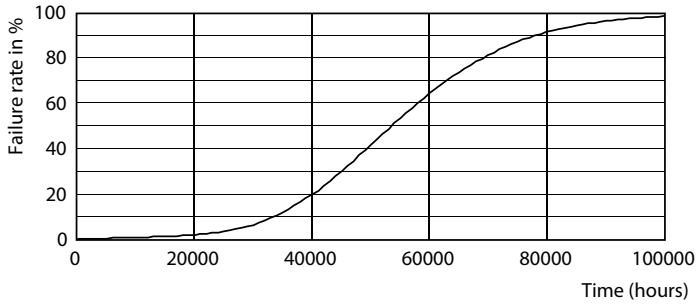


Light Distribution Diagram - 14T5HE/46-835/IF20/G/DIM 10/1



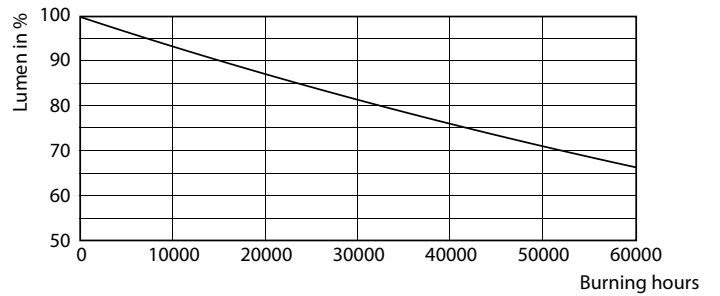
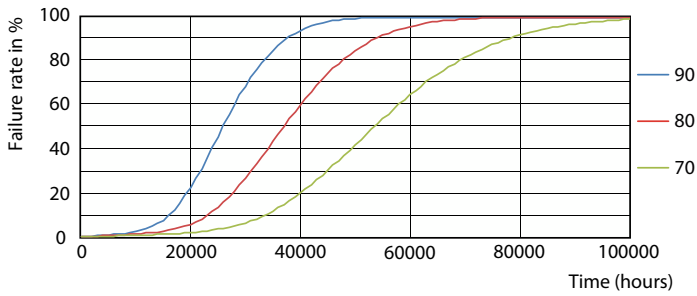
Spectral Power Distribution Colour - 14T5HE/46-835/IF20/G/DIM 10/1

Lifetime



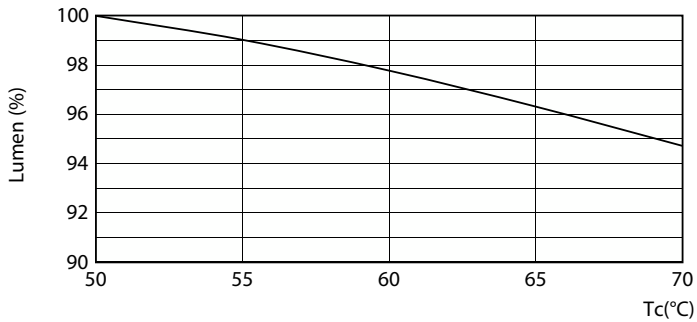
Life Expectancy Diagram - 14T5HE/46-835/IF20/G/DIM 10/1

Life Expectancy Diagram - 14T5HE/46-835/IF20/G/DIM 10/1



Life Expectancy Diagram - 14T5HE/46-835/IF20/G/DIM 10/1

Lumen Maintenance Diagram - 14T5HE/46-835/IF20/G/DIM 10/1



Lumen Maintenance Diagram - 14T5HE/46-835/IF20/G/DIM 10/1

