



T5

11T5HE/34-850/IF15/G/DIM 10/1

Philips T5 LED tubes offer an affordable, energy saving retrofit solution. The T5 lamps have been engineered to withstand the test of time with a 50,000-hour lifetime and a limited 5-year warranty to back it up. The lighting performance effectively replaces conventional fluorescent T5 HO or T5 HE lamps. Available in either InstantFit (Type A or Type C) or MainsFit (Type B / Ballast bypass), Philips T5 TLEDs provide a variety of options for any application.

Product data

General Information	
Base	G5 [G5]
EU RoHS compliant	Yes
Nominal Lifetime (Nom)	50000 h
Switching Cycle	50000X
Light Technical	
Color Code	850 [CCT of 5000K]
Beam Angle (Nom)	200 °
Initial lumen (Nom)	1500 lm
Color Designation	Daylight
Correlated Color Temperature (Nom)	5000 K
Luminous Efficacy (rated) (Nom)	136.00 lm/W
Color Consistency	<5
Color Rendering Index (Nom)	82
LLMF At End Of Nominal Lifetime (Nom)	70 %
Operating and Electrical	
Input Frequency	40000-110000 Hz
Power (Rated) (Nom)	11 W
Lamp Current (Max)	400 mA

Lamp Current (Min)	60 mA
Starting Time (Nom)	0.5 s
Warm Up Time to 60% Light (Nom)	0.5 s
UL Type	Type A - works on ballast
Power Factor (Nom)	0.9
Voltage (Nom)	50-80 V

Temperature	
T-Ambient (Max)	45 °C
T-Ambient (Min)	-20 °C
T-Storage (Max)	65 °C
T-Storage (Min)	-40 °C
T-Case Maximum (Nom)	70 °C

Controls and Dimming	
Dimmable	Yes

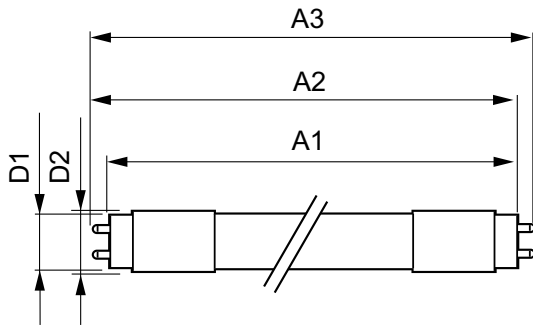
Mechanical and Housing	
Bulb Material	Glass
Product Length	36 in

T5

Bulb Shape	Tube, double-ended
Approval and Application	
Energy Saving Product	Yes
Approbation Marks	UL certificate RoHS compliance
Energy Consumption kWh/1000 h	- kWh
Product Data	
Order product name	11T5HE/34-850/IF15/G/DIM 10/1

EAN/UPC - Product	046677476489
Order code	476481
Numerator - Quantity Per Pack	1
Numerator - Packs per outer box	10
Material Nr. (12NC)	929001823804
Net Weight (Piece)	0.110 kg
Model Number	9290018238

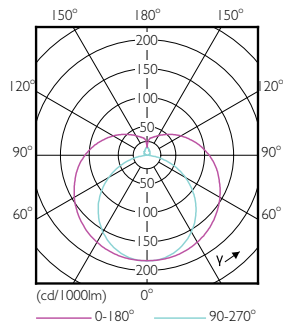
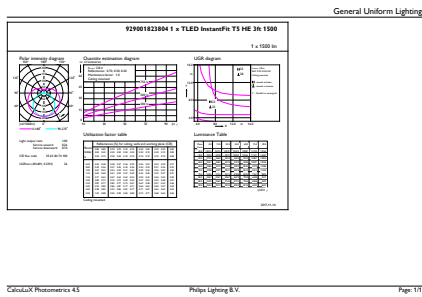
Dimensional drawing



TLED 900mm HFV11.5-21W 1500lm 5000K ND

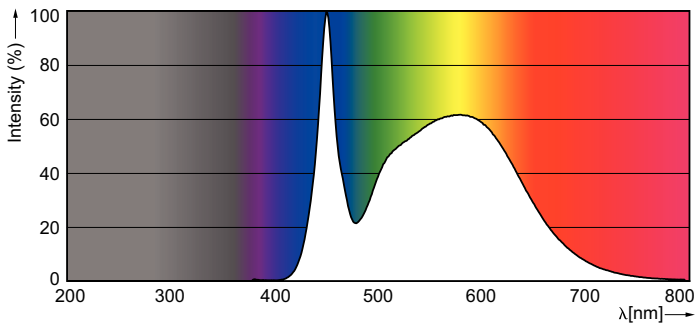
Product	D1	D2	A1	A2	A3
11T5HE/34-850/IF15/G/DIM 10/1	15.3 mm	18.4 mm	847.8 mm	854.9 mm	862 mm

Photometric data

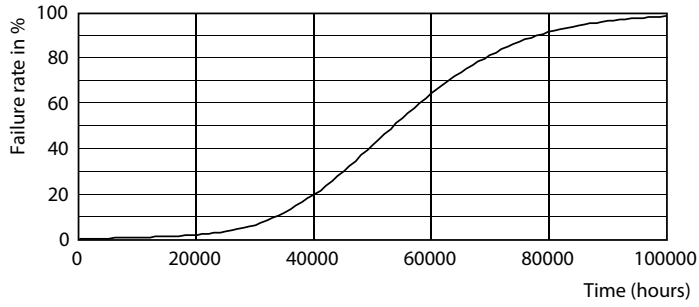


LEDtube 11W G5 850 200D DIM IF15

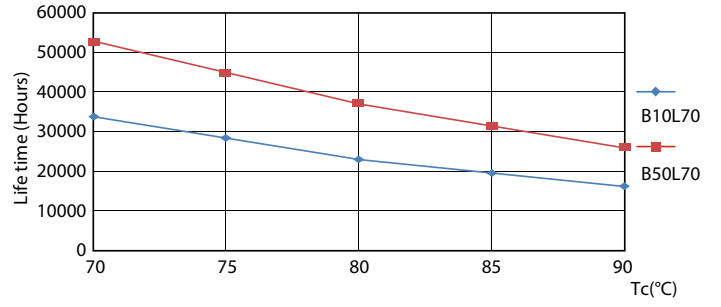
LEDtube 8W G5 830 200D DIM IF10



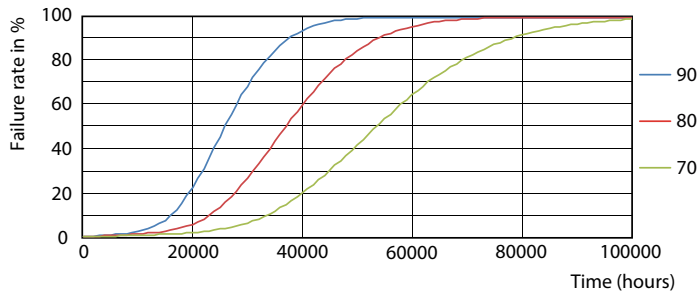
Lifetime



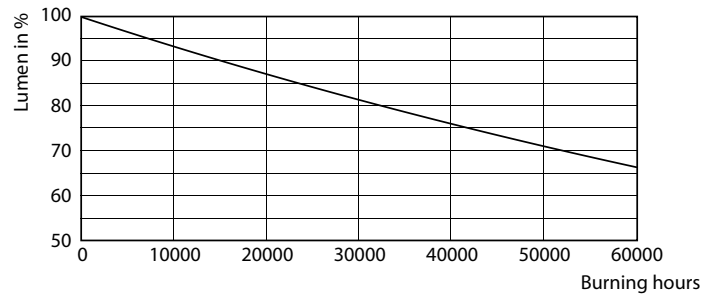
LEDtube 8-14W G5 830-850 200D DIM IF10-21



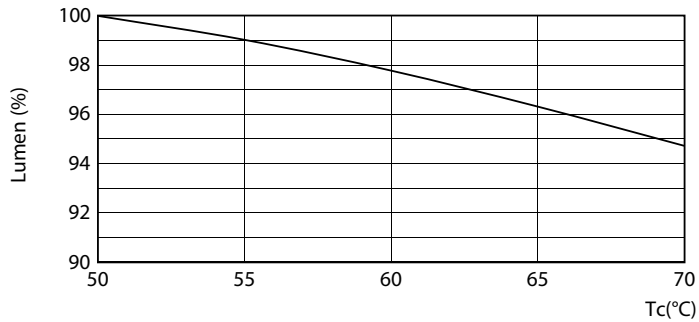
LEDtube 8-14W G5 830-850 200D DIM IF10-21



LEDtube 8-14W G5 830-850 200D DIM IF10-21



LEDtube 8-14W G5 830-850 200D DIM IF10-21



LEDtube 8-14W G5 830-850 200D DIM IF10-21

