



T5

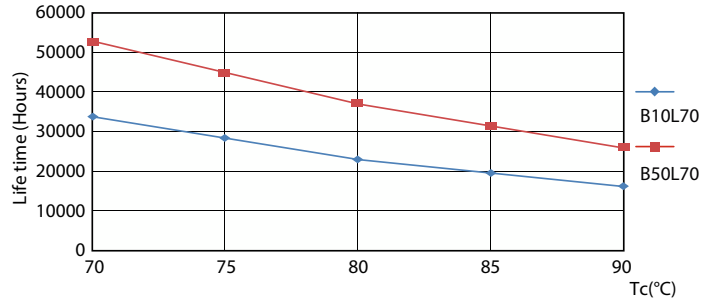
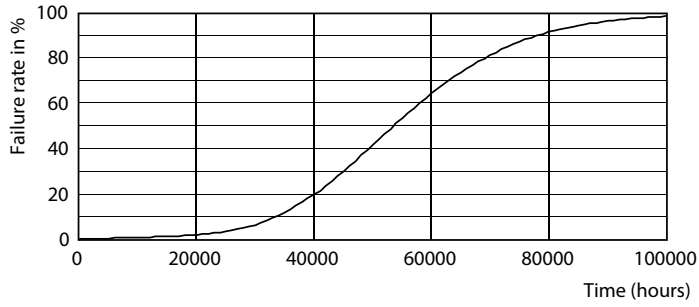
11T5HE/34-835/IF14/G/DIM 10/1

Philips T5 LED tubes offer an affordable, energy saving retrofit solution. The T5 lamps have been engineered to withstand the test of time with a 50,000-hour lifetime and a limited 5-year warranty to back it up. The lighting performance effectively replaces conventional fluorescent T5 HO or T5 HE lamps. Available in either InstantFit (Type A or Type C) or MainsFit (Type B / Ballast bypass), Philips T5 TLEDs provide a variety of options for any application.

Product data

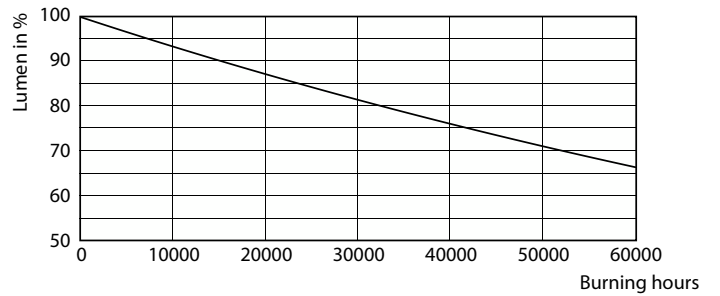
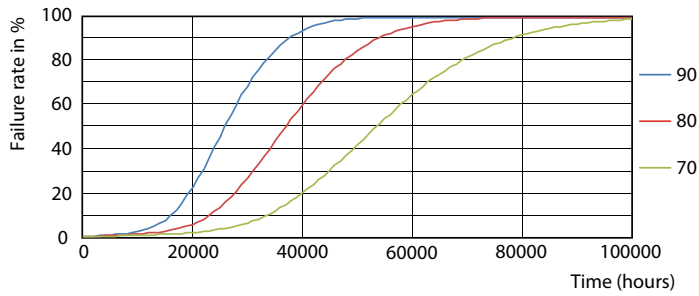
General Information		Input Frequency	
Cap-Base	G5 [G5]	Power Consumption	40000-110000 Hz
EU RoHS compliant	Yes	Wattage Equivalent	11 W
Nominal lifetime	50,000 hour(s)	Starting Time (Nom)	21 W
Switching Cycle	50,000	Warm-up time to 60% light	0.5 s
Lighting Technology	LED	Power Factor (Fraction)	0.9
Brand	Philips	Voltage (Nom)	50-80 V
Light Technical		Temperature	
Color Code	835 [CCT of 3500K]	Ambient temperature range	-20 °C to 45 °C
Beam Angle (Nom)	200 degree(s)	T-Case Maximum (Nom)	158 °F
Luminous Flux	1,400 lumen	Controls and Dimming	
Color Designation	White (WH)	Dimmable	Yes
Correlated Color Temperature (Nom)	3500 K	Mechanical and Housing	
Luminous Efficacy (rated) (Nom)	127.00 lm/W	Bulb Finish	Frosted
Color Consistency	<6	Bulb Material	Glass
Color rendering index (CRI)	82	Product Length	35-7/16 inch
LLMF At End Of Nominal Lifetime (Nom)	70 %	Bulb Shape	Tube, double-ended
Operating and Electrical			
Line Frequency	40000-110000 Hz		

Lifetime



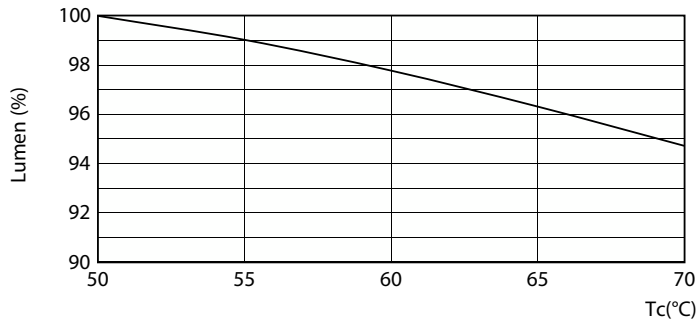
Life Expectancy Diagram - 11T5HE/34-835/IF14/G/DIM 10/1

Life Expectancy Diagram - 11T5HE/34-835/IF14/G/DIM 10/1



Life Expectancy Diagram - 11T5HE/34-835/IF14/G/DIM 10/1

Lumen Maintenance Diagram - 11T5HE/34-835/IF14/G/DIM 10/1



Lumen Maintenance Diagram - 11T5HE/34-835/IF14/G/DIM 10/1

