



# T5

## 8T5HE/22-835/IF10/G/DIM 10/1

Philips T5 LED tubes offer an affordable, energy saving retrofit solution. The T5 lamps have been engineered to withstand the test of time with a 50,000-hour lifetime and a limited 5-year warranty to back it up. The lighting performance effectively replaces conventional fluorescent T5 HO or T5 HE lamps. Available in either InstantFit (Type A or Type C) or MainsFit (Type B / Ballast bypass), Philips T5 TLEDs provide a variety of options for any application.

### Product data

General Information		Lamp Current (Min)	
Base	G5 [ G5]		60 mA
EU RoHS compliant	Yes	Starting Time (Nom)	0.5 s
Nominal Lifetime (Nom)	50000 h	Warm Up Time to 60% Light (Nom)	0.5 s
Switching Cycle	50000X	UL Type	Type A - works on ballast
		Power Factor (Nom)	0.9
		Voltage (Nom)	40-60 V
Light Technical		Temperature	
Color Code	835 [ CCT of 3500K]	T-Ambient (Max)	45 °C
Beam Angle (Nom)	200 °	T-Ambient (Min)	-20 °C
Initial lumen (Nom)	1000 lm	T-Storage (Max)	65 °C
Color Designation	White (WH)	T-Storage (Min)	-40 °C
Correlated Color Temperature (Nom)	3500 K	T-Case Maximum (Nom)	70 °C
Luminous Efficacy (rated) (Nom)	125.00 lm/W		
Color Consistency	<6	Controls and Dimming	
Color Rendering Index (Nom)	82	Dimmable	Yes
LLMF At End Of Nominal Lifetime (Nom)	70 %		
Operating and Electrical		Mechanical and Housing	
Input Frequency	40000-110000 Hz	Bulb Material	Glass
Power (Rated) (Nom)	8 W	Product Length	24 in
Lamp Current (Max)	400 mA		

# T5

## Approval and Application

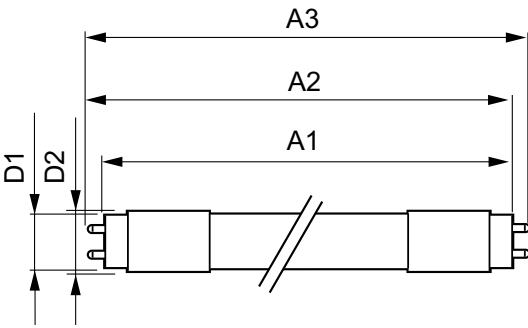
Energy Efficiency Label (EEL)	Not applicable
Energy Saving Product	Yes
Approbation Marks	UL certificate RoHS compliance
Energy Consumption kWh/1000 h	- kWh

## Product Data

Order product name	8T5HE/22-835/IF10/G/DIM 10/1
EAN/UPC - Product	046677476427

Order code	476424
Numerator - Quantity Per Pack	1
Numerator - Packs per outer box	10
Material Nr. (12NC)	929001823204
Net Weight (Piece)	0.080 kg
Model Number	9290018232

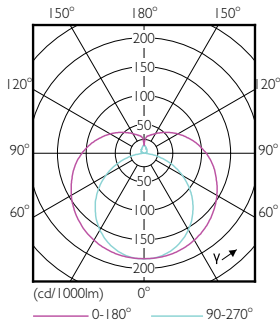
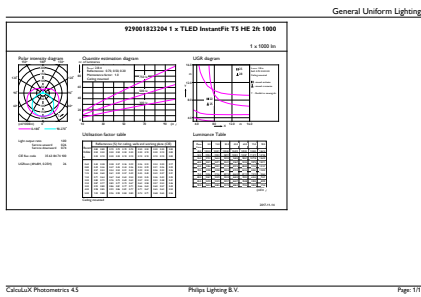
## Dimensional drawing



TLED 600mm HFV8.5-14W 1050lm 3500K ND

Product	D1	D2	A1	A2	A3
8T5HE/22-835/IF10/G/DIM 10/1	15.3 mm	18.4 mm	547.8 mm	554.9 mm	562 mm

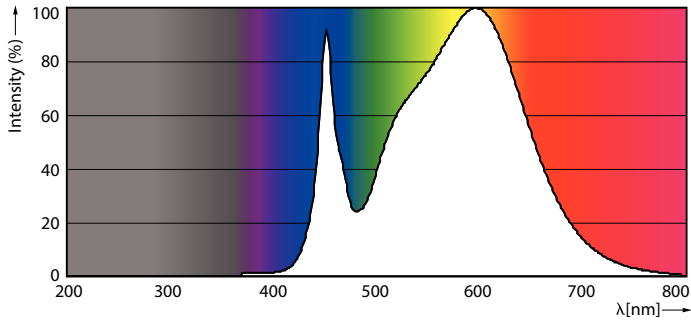
## Photometric data



LEDtube 8W G5 835 200D DIM IF10

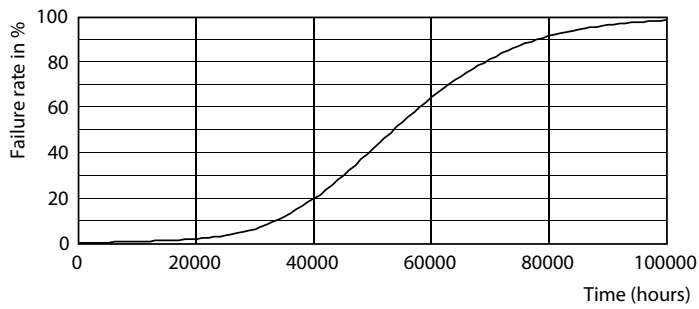
LEDtube 8W G5 830 200D DIM IF10

Photometric data

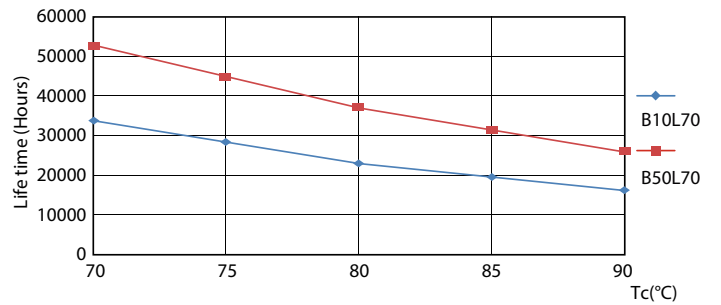


LEDtube 8W G5 835 200D DIM IF10

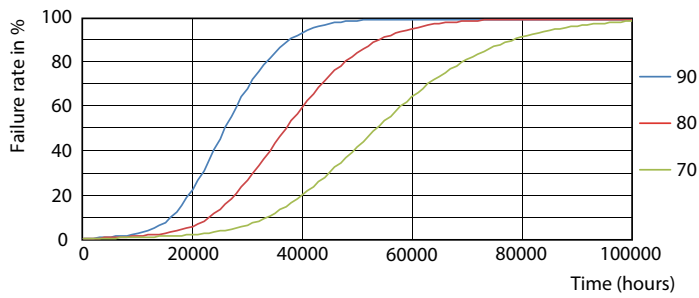
Lifetime



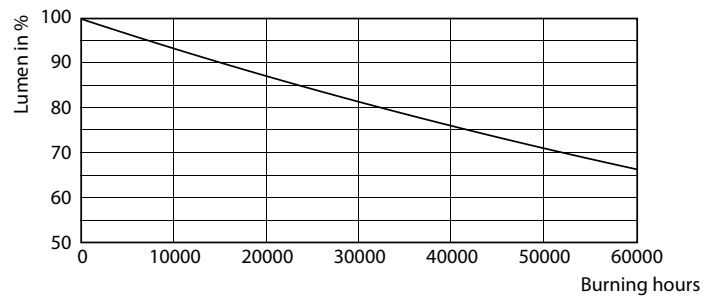
LEDtube 8-14W G5 830-850 200D DIM IF10-21



LEDtube 8-14W G5 830-850 200D DIM IF10-21



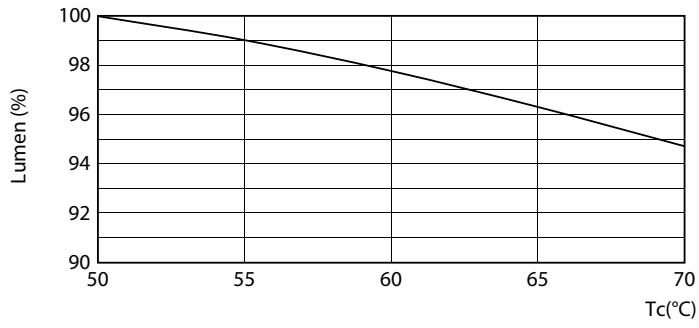
LEDtube 8-14W G5 830-850 200D DIM IF10-21



LEDtube 8-14W G5 830-850 200D DIM IF10-21

# T5

## Lifetime



LEDtube 8-14W G5 830-850 200D DIM IF10-21

