



T8

14T8/COR/48-850/IF21/G/DIM 10/1

Our TLEDs are available in InstantFit (Type A / Type C) or MainsFit (Ballast bypass / Type B) versions. The InstantFit lamps work on a broad variety of ballasts and LED drivers. Only InstantFit has over 15,000 lamp & ballast combinations delivering even light output, energy savings and a long lifetime. Our MainsFit products feature a double-ended design, simplifying installation while a proprietary safety circuit minimizes a shock risk. Lamp sizes range from 2-foot to 8-foot and U-bend with a variety of lumen outputs.

Product data

General Information	
Cap-Base	G13 [Medium Bi-Pin Fluorescent]
EU RoHS compliant	Yes
Nominal lifetime	70,000 hour(s)
Switching Cycle	50,000
Lighting Technology	LED
Brand	Philips
Light Technical	
Color Code	850 [CCT of 5000K]
Beam Angle (Nom)	240 degree(s)
Luminous Flux	2,100 lumen
Color Designation	Daylight
Correlated Color Temperature (Nom)	5000 K
Luminous Efficacy (rated) (Nom)	150.00 lm/W
Color Consistency	<5
Color rendering index (CRI)	82
LLMF At End Of Nominal Lifetime (Nom)	70 %

Operating and Electrical	
Line Frequency	25000-105000 Hz
Input Frequency	25000-105000 Hz
Power Consumption	14 W
Wattage Equivalent	32 W
Starting Time (Nom)	0.5 s
Warm-up time to 60% light	0.5 s
Power Factor (Fraction)	0.9
Voltage (Nom)	120-277, 347 V
Temperature	
Ambient temperature range	-20 °C to 45 °C
T-Case Maximum (Nom)	122 °F
Controls and Dimming	
Dimmable	Yes
Mechanical and Housing	
Bulb Finish	Frosted
Bulb Material	Glass

T8

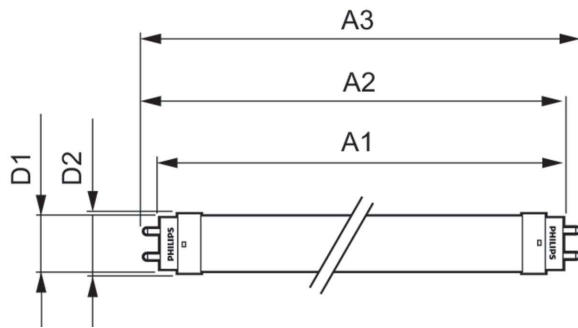
Product Length	47-1/4 inch
Bulb Shape	Tube, double-ended
Approval and Application	
Energy Saving Product	Yes
Approval Marks	UL certificate RoHS compliance DLC compliance
Energy Consumption kWh/1000 h	- kWh
Energy Certifications	DLC Standard

Product Data

Order product name	14T8/COR/48-850/IF21/G/DIM 10/1
--------------------	---------------------------------

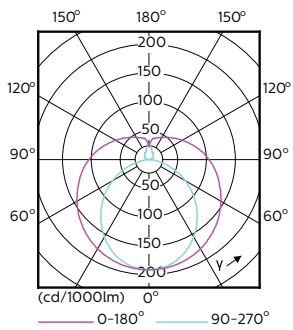
Order code	470120
Numerator - Quantity Per Pack	1
Numerator - Packs per outer box	10
Material number (12NC)	929001343334
Net weight	0.215 kg
Full product name	14T8/COR/48-850/IF21/G/DIM 10/1
EAN/UPC - Case	50046677470123

Dimensional drawing

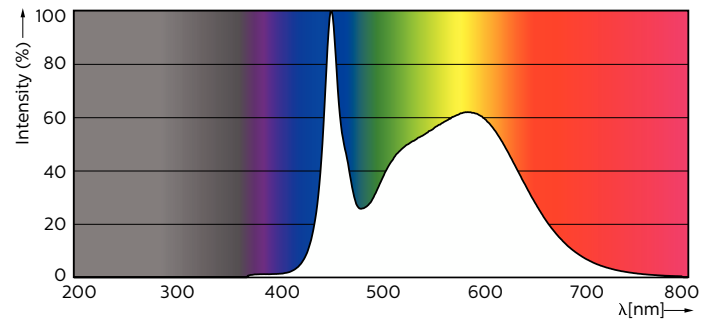


Product	D1	D2	A1	A2	A3
14T8/COR/48-850/IF21/G/DIM 10/1	25.7 mm	28 mm	1,198 mm	1,205 mm	1,212 mm

Photometric data

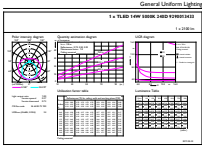


Light Distribution Diagram - 14T8/COR/48-850/IF21/G/DIM 10/1



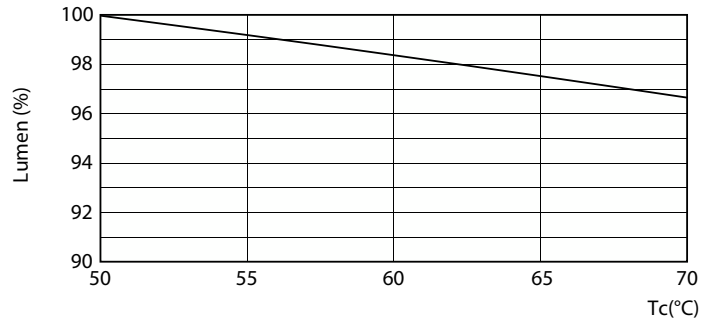
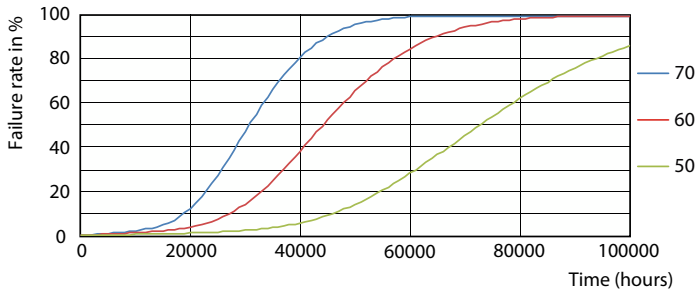
Spectral Power Distribution Colour - 14T8/COR/48-850/IF21/G/DIM 10/1

Photometric data



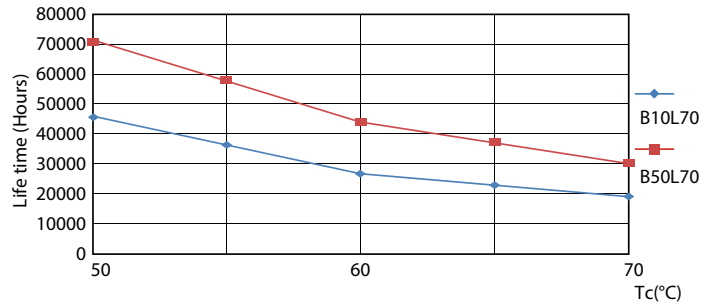
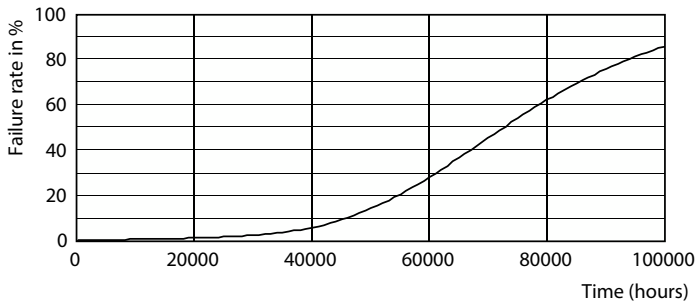
General Information 41 Photo Lighting 8.1 Page 17

Lifetime



Life Expectancy Diagram - 14T8/COR/48-850/IF21/G/DIM 10/1

Lumen Maintenance Diagram - 14T8/COR/48-850/IF21/G/DIM 10/1

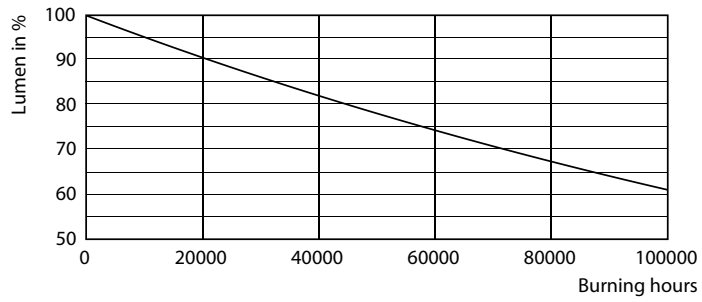


Life Expectancy Diagram - 14T8/COR/48-850/IF21/G/DIM 10/1

Life Expectancy Diagram - 14T8/COR/48-850/IF21/G/DIM 10/1

T8

Lifetime



Lumen Maintenance Diagram - 14T8/COR/48-850/IF21/G/DIM 10/1

