



# T8

## 14T8/COR/48-835/IF20/G/DIM 10/1

Our TLEDs are available in InstantFit (Type A / Type C) or MainsFit (Ballast bypass / Type B) versions. The InstantFit lamps work on a broad variety of ballasts and LED drivers. Only InstantFit has over 15,000 lamp & ballast combinations delivering even light output, energy savings and a long lifetime. Our MainsFit products feature a double-ended design, simplifying installation while a proprietary safety circuit minimizes a shock risk. Lamp sizes range from 2-foot to 8-foot and U-bend with a variety of lumen outputs.

### Product data

General Information		Operating and Electrical	
Cap-Base	G13 [Medium Bi-Pin Fluorescent]	Line Frequency	25000-105000 Hz
EU RoHS compliant	Yes	Input Frequency	25000-105000 Hz
Nominal lifetime	70,000 hour(s)	Power Consumption	14 W
Switching Cycle	50,000	Wattage Equivalent	32 W
Lighting Technology	LED	Starting Time (Nom)	0.5 s
Brand	Philips	Warm-up time to 60% light	0.5 s
		Power Factor (Fraction)	0.9
		Voltage (Nom)	120-277, 347 V
Light Technical		Temperature	
Color Code	835 [CCT of 3500K]	Ambient temperature range	-20 °C to 45 °C
Beam Angle (Nom)	240 degree(s)	T-Case Maximum (Nom)	122 °F
Luminous Flux	2,000 lumen		
Color Designation	White (WH)	Controls and Dimming	
Correlated Color Temperature (Nom)	3500 K	Dimmable	Yes
Luminous Efficacy (rated) (Nom)	142.86 lm/W		
Color Consistency	<6	Mechanical and Housing	
Color rendering index (CRI)	82	Bulb Finish	Frosted
LLMF At End Of Nominal Lifetime (Nom)	70 %	Bulb Material	Glass

# T8

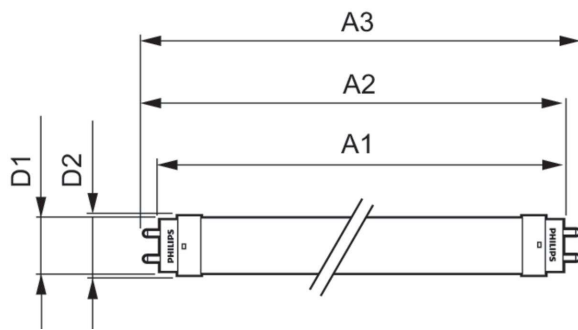
Product Length	47-1/4 inch
Bulb Shape	Tube, double-ended
<b>Approval and Application</b>	
Energy Saving Product	Yes
Approval Marks	UL certificate RoHS compliance DLC compliance
Energy Consumption kWh/1000 h	- kWh
Energy Certifications	DLC Standard

## Product Data

Order product name	14T8/COR/48-835/IF20/G/DIM 10/1
--------------------	---------------------------------

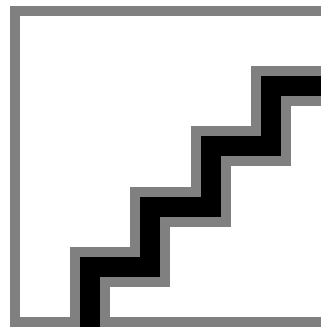
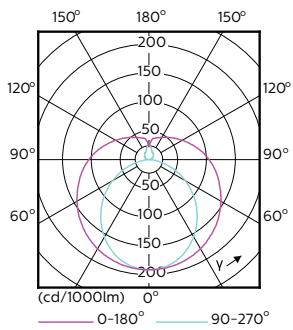
Order code	470104
Numerator - Quantity Per Pack	1
Numerator - Packs per outer box	10
Material number (12NC)	929001343134
Net weight	0.215 kg
Full product name	14T8/COR/48-835/IF20/G/DIM 10/1
EAN/UPC - Case	50046677470109

## Dimensional drawing



Product	D1	D2	A1	A2	A3
14T8/COR/48-835/IF20/G/DIM 10/1	25.7 mm	28 mm	1,198 mm	1,205 mm	1,212 mm

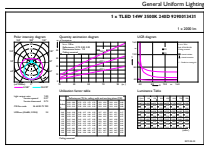
## Photometric data



Light Distribution Diagram - 14T8/COR/48-835/IF20/G/DIM 10/1

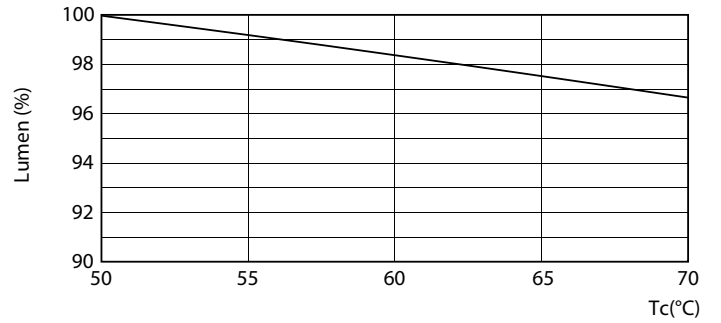
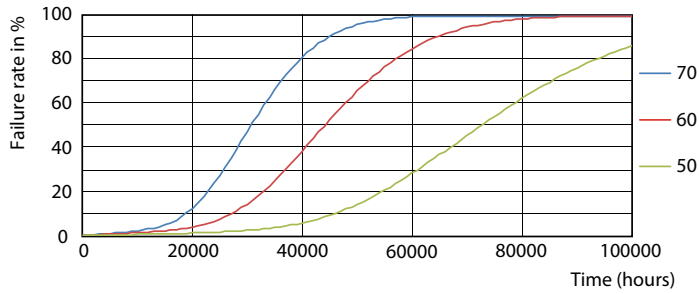
Spectral Power Distribution Colour - 14T8/COR/48-835/IF20/G/DIM 10/1

Photometric data



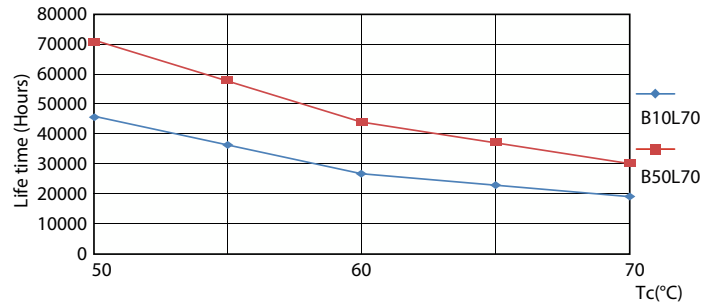
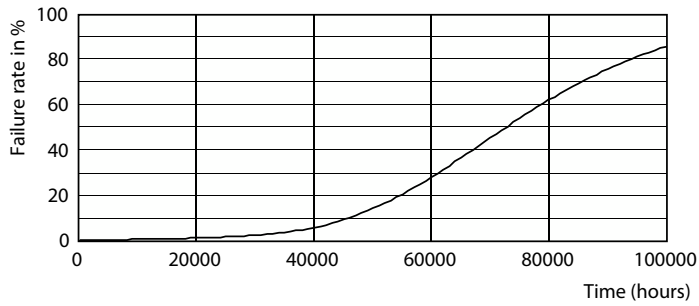
General Information 41 Photo Lighting 8.1 Page 17

Lifetime



Life Expectancy Diagram - 14T8/COR/48-835/IF20/G/DIM 10/1

Lumen Maintenance Diagram - 14T8/COR/48-835/IF20/G/DIM 10/1

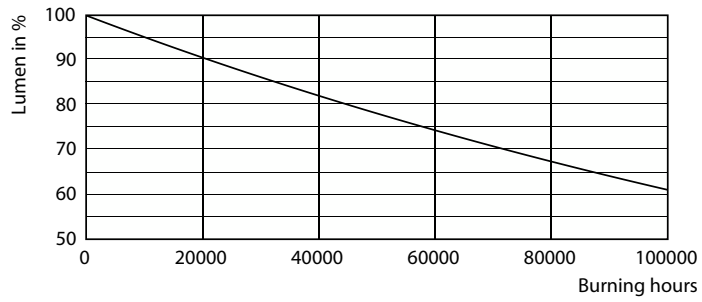


Life Expectancy Diagram - 14T8/COR/48-835/IF20/G/DIM 10/1

Life Expectancy Diagram - 14T8/COR/48-835/IF20/G/DIM 10/1

# T8

## Lifetime



Lumen Maintenance Diagram - 14T8/COR/48-835/IF20/G/DIM 10/1

