



MasterColor CDM-TC T4

MasterColor CDM-TC 70W/830 G8.5 T4 CL

MasterColor CDM lamp gives a unique combination of unbeatable light quality and consistent performance over lifetime while keeping running costs low. The Philips MasterColor Tubular Single-Ended T4 lamp is a compact, energy efficient, ceramic metal halide lamp that provides crisp, sparkling light.

Warnings and Safety

- R "WARNING: These lamps can cause serious skin burn and eye inflammation from short wave ultraviolet radiation if outer envelope of the lamp is broken or punctured. Do not use where people will remain for more than a few minutes unless adequate shielding or other safety precautions are used. Certain lamps that will automatically extinguish when the outer envelope is broken or punctured are commercially available." This lamp complies with FDA radiation performance standard 21 CFR subchapter J. (USA:21 CFR 1040.30 Canada: SOR/DORS/80-381)
- Lamp contains mercury.
- Manage in Accord with Disposal Laws.
- See: www.lamprecycle.org or 1-800-555-0050

Product data

General information		Luminous Flux (Rated) (Nom)	
Base	G8.5 [G8.5]		6300 lm
Operating Position	Universal [Universal]	Color Designation	Warm White (WW)
Life to 5% Failures (Nom)	9000 h	Lumen Maintenance 10000 h (Nom)	65 %
Life To 10% Failures (Nom)	8000 h	Lumen Maintenance 2000 h (Min)	75 %
Life to 20% Failures (Nom)	9000 h	Lumen Maintenance 2000 h (Nom)	85 %
Life to 50% Failures (Nom)	12000 h	Lumen Maintenance 5000 h (Min)	65 %
ANSI Code HID	C139/E	Lumen Maintenance 5000 h (Nom)	75 %
Light technical		Chromaticity Coordinate X (Nom)	0.439
Color Code	830 [CCT of 3000K]	Chromaticity Coordinate Y (Nom)	0.398
		Correlated Color Temperature (Nom)	3000 K
		Luminous Efficacy (rated) (Nom)	86 lm/W

MasterColor CDM-TC T4

Color Rendering Index (Nom)	83
Operating and electrical	
Power (Rated) (Nom)	73.2 W
Lamp Current Run-Up (Max)	1.4 A
Ignition Supply Voltage (Max)	198 V
Ignition Peak Voltage (Max)	5000 V
Ignition Supply Voltage (Min)	198 V
Ignition Peak Voltage (Min)	3500 V
Re-Ignition Time (Min) (Max)	15 min
Ignition Time (Max)	30 s
Voltage (Max)	87 V
Voltage (Min)	78 V
Voltage (Nom)	83 V
Controls and dimming	
Dimmable	No
Run-Up Time 90% (Max)	3 min
Mechanical and housing	
Bulb Finish	Clear
Bulb Material	UV-Block Quartz
Bulb Shape	T4 [T4]

Approval and application

Mercury (Hg) Content (Nom)	4.6 mg
Energy Consumption kWh/1000 h	80 kWh

UV

Pet (Niosh) (Min)	8 h/500lx
Damage Factor D/fc (Max)	0.3

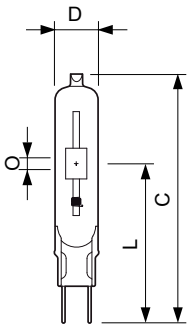
Luminaire design requirements

Bulb Temperature (Max)	1022 °F
Pinch Temperature (Max)	572 °F
Pinch Temperature (Max)-DUP(do not use)	572 °F

Product data

Order product name	MasterColor CDM-TC 70W/830 G8.5 T4 CL
EAN/UPC - Product	046677373733
Order code	373738
Numerator - Quantity Per Pack	1
Numerator - Packs per outer box	12
Material Nr. (12NC)	928086505115
Net Weight (Piece)	0.022 lb
ILCOS Code	MT/UB-70/830-H-G8.5-17/85

Dimensional drawing

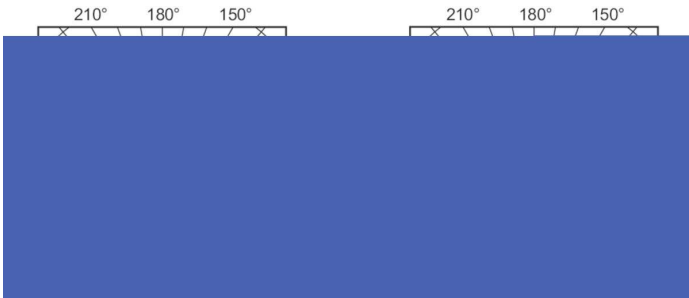


MasterColor CDM-TC 70W/830 G8.5 T4 CL

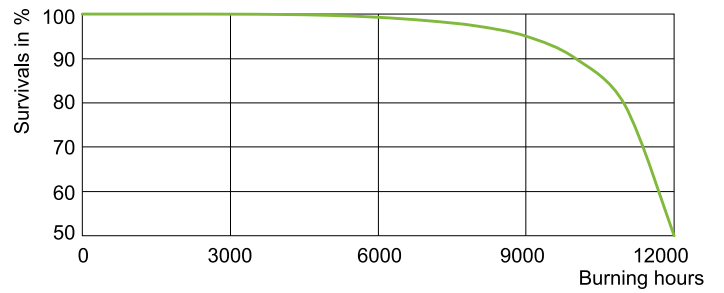
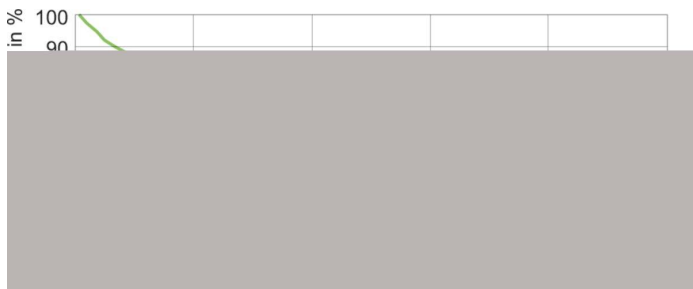
Product	D (max)	D	O	L (min)	L (max)	L	C (max)
MasterColor CDM-TC 70W/830 G8.5 T4 CL	5/8 in	0.5 in	5/16 in	2-1/16 in	2-1/8 in	2-1/16 in	3-3/8 in

MasterColor CDM-TC T4

Photometric data



Lifetime



LDLE_CDM-TC_0001-Life expectancy diagram

