



# Double Ended Linear

## Double Ended Linear BC250T3Q/CL 120V 12/1PK

High-quality white light with superior lumen performance; Halogen Double Ended lamps provide bright, white light for work lights and security lighting. Rugged construction for busy work sites. Offered in several lengths to meet most application needs. High lumen output provides light where you need it.

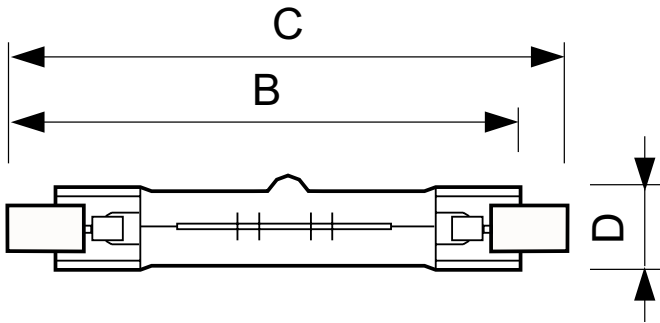
### Product data

General information	
Base	R7S [ R7s]
Nominal Lifetime (Nom)	2000 h
Rated Lifetime (Hours)	2000 h
Light technical	
Initial lumen (Nom)	4000 lm
Correlated Color Temperature (Nom)	2900 K
Luminous Efficacy (rated) (Nom)	16 lm/W
Color Rendering Index (Nom)	100
Operating and electrical	
Power (Rated) (Nom)	250 W
Lamp Current (Nom)	2.08 A
Starting Time (Nom)	0.0 s
Voltage (Nom)	120 V
Controls and dimming	
Dimmable	Yes

Mechanical and housing	
Bulb Finish	Clear
Cap-Base Information	na [ -]
Bulb Shape	T3 [ T 12mm (T3)]
Luminaire design requirements	
Bulb Temperature (Max)	1652 °F
Pinch Temperature (Max)	662 °F
Product data	
Order product name	Double Ended Linear BC250T3Q/CL 120V 12/1PK
EAN/UPC - Product	046677415624
Order code	415620
Numerator - Quantity Per Pack	1
Numerator - Packs per outer box	12
Material Nr. (12NC)	924884736301
Copy Net Weight (Piece)	0.013 lb

## Double Ended Linear

### Dimensional drawing



Product	D (max)	B (max)	B	B (min)	C (max)
Double Ended Linear BC250T3Q/CL 120V 12/1PK	1/2 in	3-1/16 in	3 in	2-15/16 in	3-1/8 in

Double Ended Linear BC250T3Q/CL 120V 12/1PK

