



# The easy way to connected lighting

## MasterConnect T8

Philips MasterConnect LEDtube InstantFit T8, which is Interact Ready, enables an easy upgrade to a connected lighting system without re-wiring the fixtures. The 2.4GHz mesh networking technology allows wireless integration with a variety of control devices, such as sensor and switch, for easy light automation. It also offers secure and reliable communication towards the Interact IoT platform or verified third party systems. The result? Greater energy savings, various control possibilities and a more adaptable space!

### Benefits

- Up to 85% energy saving when used with advanced controls (compared to fluorescent)
- Flexible and automated lighting to maximize productivity and comfort
- Works seamlessly with Interact IoT platform

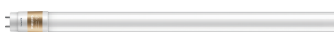
### Features

- Quick upgrade to smart lighting with existing electronic ballast
- Superior lighting performance over product lifetime
- Easy to commission and set up
- Reliable and secure 2.4GHz mesh wireless communication

### Application

- Office, education, retail and healthcare
- Parking, industry and warehouse

### Versions



G13



Medium Bi-Pin Fluorescent Tube,  
double-ended

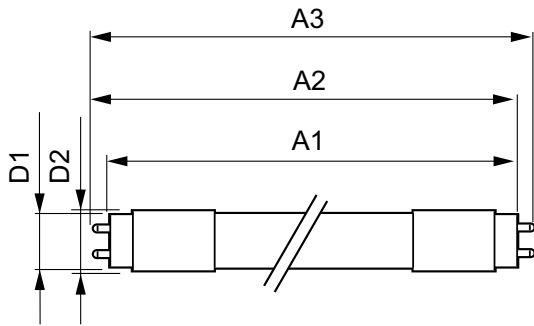
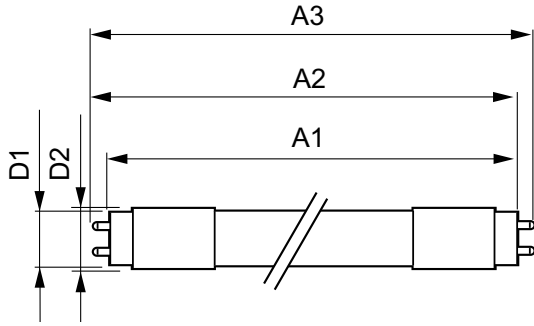
# MasterConnect T8

## Versions



Medium Bi-Pin Fluorescent Tube,  
double-ended

## Dimensional drawing



Product	D1	D2	A1	A2	A3
14T8/48-840/IF21/MAScon IA 10/1	25.7 mm	26.3 mm	1198 mm	1205 mm	1212 mm
14T8/48-850/IF21/MAScon IA 10/1	25.7 mm	26.3 mm	1198 mm	1205 mm	1212 mm
14T8/48-835/IF20/MAScon IA 10/1	25.7 mm	26.3 mm	1198 mm	1205 mm	1212 mm
14T8/48-830/IF20/MAScon IA 10/1	25.7 mm	26.3 mm	1198 mm	1205 mm	1212 mm

Product	D1	D2	A1	A2	A3
14T8/48-835/IF20/MC IA 10/1	25.7 mm	26.3 mm	1198 mm	1205 mm	1212 mm
14T8/48-840/IF21/MC IA 10/1	25.7 mm	26.3 mm	1198 mm	1205 mm	1212 mm
14T8/48-850/IF21/MC IA 10/1	25.7 mm	26.3 mm	1198 mm	1205 mm	1212 mm
14.5T8/48-835/MF20/MC IA 10/1	25.7 mm	28 mm	1198 mm	1205 mm	1212 mm
14.5T8/48-840/MF21/MC IA 10/1	25.7 mm	28 mm	1198 mm	1205 mm	1212 mm
14.5T8/48-850/MF21/MC IA 10/1	25.7 mm	28 mm	1198 mm	1205 mm	1212 mm

# MasterConnect T8

## Approval and Application

Energy Consumption kWh/1000 h	- kWh
Energy Efficiency Label (EEL)	Not applicable

## Controls and Dimming

Dimmable	Wireless Dim
----------	--------------

## General Information

Switching Cycle	50000X
-----------------	--------

## Light Technical

Beam Angle (Nom)	160 °
Color Rendering Index (Nom)	82
Llmf At End Of Nominal Lifetime (Nom)	70 %

## Mechanical and Housing

Bulb Shape	Tube, double-ended
------------	--------------------

## Temperature

T-Ambient (Max)	45 °C
T-Ambient (Min)	-20 °C
T-Storage (Max)	65 °C
T-Storage (Min)	-40 °C

## Operating and Electrical

Order Code	Full Product Name	Input Frequency	Voltage (Nom)	Power (Rated) (Nom)	Starting Time (Nom)
537175	14T8/48-830/IF20/MAScon IA 10/1	50 to 60 Hz	120-277, 347 V	14 W	0.5 s
537183	14T8/48-835/IF20/MAScon IA 10/1	50 to 60 Hz	120-277, 347 V	14 W	0.5 s
537191	14T8/48-840/IF21/MAScon IA 10/1	50 to 60 Hz	120-277, 347 V	14 W	0.5 s
537209	14T8/48-850/IF21/MAScon IA 10/1	50 to 60 Hz	120-277, 347 V	14 W	0.5 s
547299	14T8/48-835/IF20/MC IA 10/1	28K to 100K Hz	100-380 V	14 W	0.5 s
547307	14T8/48-840/IF21/MC IA 10/1	28K to 100K Hz	100-380 V	14 W	0.5 s
547315	14T8/48-850/IF21/MC IA 10/1	28K to 100K Hz	100-380 V	14 W	0.5 s
562736	14.5T8/48-835/MF20/MC IA 10/1	50 to 60 Hz	120-277 V	14.5 W	1 s
562744	14.5T8/48-840/MF21/MC IA 10/1	50 to 60 Hz	120-277 V	14.5 W	1 s
562751	14.5T8/48-850/MF21/MC IA 10/1	50 to 60 Hz	120-277 V	14.5 W	1 s

## General Information

Order Code	Full Product Name	Cap-Base	Nominal Lifetime (Nom)
537175	14T8/48-830/IF20/MAScon IA 10/1	G13	50000 h
537183	14T8/48-835/IF20/MAScon IA 10/1	G13	50000 h
537191	14T8/48-840/IF21/MAScon IA 10/1	G13	50000 h
537209	14T8/48-850/IF21/MAScon IA 10/1	G13	50000 h
547299	14T8/48-835/IF20/MC IA 10/1	G13	70000 h
547307	14T8/48-840/IF21/MC IA 10/1	G13	70000 h
547315	14T8/48-850/IF21/MC IA 10/1	G13	70000 h

Order Code	Full Product Name	Cap-Base	Nominal Lifetime (Nom)
562736	14.5T8/48-835/MF20/MC IA 10/1	G13 ROT (Rotating)	70000 h
562744	14.5T8/48-840/MF21/MC IA 10/1	G13 ROT (Rotating)	70000 h
562751	14.5T8/48-850/MF21/MC IA 10/1	G13 ROT (Rotating)	70000 h

## Light Technical

Order Code	Full Product Name	Color Code	Correlated Color	
			Temperature (Nom)	Luminous Flux (Nom)
537175	14T8/48-830/IF20/MAScon IA 10/1	830	3000 K	2000 lm
537183	14T8/48-835/IF20/MAScon IA 10/1	835	3500 K	2000 lm
537191	14T8/48-840/IF21/MAScon IA 10/1	841	4000 K	2100 lm
537209	14T8/48-850/IF21/MAScon IA 10/1	850	5000 K	2100 lm
547299	14T8/48-835/IF20/MC IA 10/1	835	3500 K	2000 lm

Order Code	Full Product Name	Color Code	Correlated Color	
			Temperature (Nom)	Luminous Flux (Nom)
547307	14T8/48-840/IF21/MC IA 10/1	841	4000 K	2100 lm
547315	14T8/48-850/IF21/MC IA 10/1	850	5000 K	2100 lm
562736	14.5T8/48-835/MF20/MC IA 10/1	835	3500 K	2000 lm
562744	14.5T8/48-840/MF21/MC IA 10/1	841	4000 K	2100 lm

# MasterConnect T8

Order Code	Full Product Name	Color Code	Correlated Color	
			Temperature (Nom)	Luminous Flux (Nom)
562751	14.5T8/48-850/MF21/MC IA 10/1	850	5000 K	2100 lm

## Temperature

Order Code	Full Product Name	T-Case Maximum (Nom)
537175	14T8/48-830/IF20/MAScon IA 10/1	40 °C
537183	14T8/48-835/IF20/MAScon IA 10/1	40 °C
537191	14T8/48-840/IF21/MAScon IA 10/1	40 °C
537209	14T8/48-850/IF21/MAScon IA 10/1	40 °C
547299	14T8/48-835/IF20/MC IA 10/1	40 °C
547307	14T8/48-840/IF21/MC IA 10/1	40 °C
547315	14T8/48-850/IF21/MC IA 10/1	40 °C
562736	14.5T8/48-835/MF20/MC IA 10/1	45 °C
562744	14.5T8/48-840/MF21/MC IA 10/1	45 °C
562751	14.5T8/48-850/MF21/MC IA 10/1	45 °C

120°

180°

