



High Performance LED replacements for conventional T5 lamps

T5

Philips T5 LED tubes offer an affordable, energy saving retrofit solution. The T5 lamps have been engineered to withstand the test of time with a 50,000-hour lifetime and a limited 5-year warranty to back it up. The lighting performance effectively replaces conventional fluorescent T5 HO or T5 HE lamps. Available in either InstantFit (Type A or Type C) or MainsFit (Type B / Ballast bypass), Philips T5 TLEDs provide a variety of options for any application.

Benefits

- Instantly reduces lighting costs
- True T5 size fits conventional applications
- One lamp for both HE and HO applications (2ft/3ft lamps)

Features

- Available in InstantFit plug-and-play (UL Type A) or MainsFit (Type B) Options
- MainsFit T5 (Type B/Ballast Bypass) are double-ended for quick installation
- Easy installation. Retrofit replacement of existing T5 lamps
- 2ft and 3ft InstantFit lamps operate on both HE and HO ballasts

Application

- Industrial & warehouses
- Retail & hospitality
- Parking lots and covered car parks

T5

Versions



G5

G5

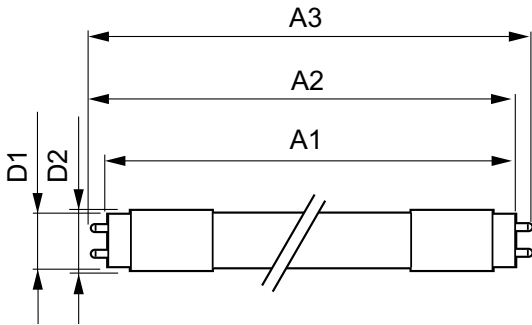
G5 Tube, double-ended Frosted

G5 Tube, double-ended Frosted

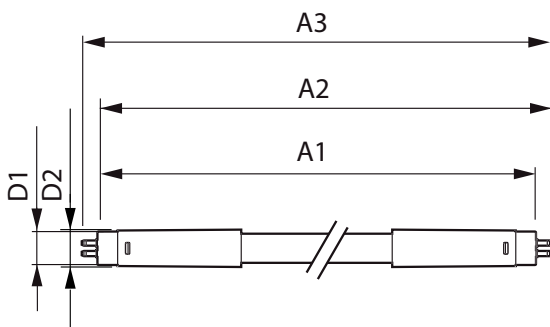


G5 Tube, double-ended Frosted

Dimensional drawing



Product	D1	D2	A1	A2	A3
24T5HO/46-840/ IF35/P/DIM 10/1	15.2 mm	17.8 mm	1147.8 mm	1154.9 mm	1162 mm
24T5HO/46-850/ IF35/P/DIM 10/1	15.2 mm	17.8 mm	1147.8 mm	1154.9 mm	1162 mm
24T5HO/46-835/ IF33/P/DIM 10/1	15.2 mm	17.8 mm	1147.8 mm	1154.9 mm	1162 mm
11T5HE/34-840/IF15/G/DIM 10/1	15.3 mm	18.4 mm	847.8 mm	854.9 mm	862 mm
11T5HE/34-830/IF14/G/DIM 10/1	15.3 mm	18.4 mm	847.8 mm	854.9 mm	862 mm
11T5HE/34-850/IF15/G/DIM 10/1	15.3 mm	18.4 mm	847.8 mm	854.9 mm	862 mm
11T5HE/34-835/IF14/G/DIM 10/1	15.3 mm	18.4 mm	847.8 mm	854.9 mm	862 mm
14T5HE/46-830/ IF20/G/DIM 10/1	15.3 mm	18.4 mm	1147.8 mm	1154.9 mm	1162 mm
8T5HE/22-830/IF10/G/DIM 10/1	15.3 mm	18.4 mm	547.8 mm	554.9 mm	562 mm
14T5HE/46-840/IF21/G/DIM 10/1	15.3 mm	18.4 mm	1147.8 mm	1154.9 mm	1162 mm
14T5HE/46-835/ IF20/G/DIM 10/1	15.3 mm	18.4 mm	1147.8 mm	1154.9 mm	1162 mm
8T5HE/22-835/IF10/G/DIM 10/1	15.3 mm	18.4 mm	547.8 mm	554.9 mm	562 mm
8T5HE/22-840/IF10/G/DIM 10/1	15.3 mm	18.4 mm	547.8 mm	554.9 mm	562 mm
14T5HE/46-850/IF21/G/DIM 10/1	15.3 mm	18.4 mm	1147.8 mm	1154.9 mm	1162 mm
8T5HE/22-850/IF10/G/DIM 10/1	15.3 mm	18.4 mm	547.8 mm	554.9 mm	562 mm



Product	D1	D2	A1	A2	A3
25T5HO/COR/46-835/MF33/G 25/1	15.3 mm	18.6 mm	1147.8 mm	1154.9 mm	1162 mm
25T5HO/COR/46-840/MF35/G 25/1	15.3 mm	18.6 mm	1147.8 mm	1154.9 mm	1162 mm
25T5HO/COR/46-850/MF35/G 25/1	15.3 mm	18.6 mm	1147.8 mm	1154.9 mm	1162 mm
10T5HE/COR/34-840/MF14/G 25/1					
14T5HE/COR/46-835/MF20/G 25/1					
8T5HE/COR/22-850/MF10/G 25/1					
8T5HE/COR/22-835/MF10/G 25/1					
10T5HE/COR/34-835/MF13/G 25/1					
8T5HE/COR/22-840/MF10/G 25/1					
10T5HE/COR/34-850/MF14/G 25/1					
14T5HE/COR/46-850/MF21/G 25/1					
14T5HE/COR/46-840/MF21/G 25/1					

General Information

Cap-Base	G5
Nominal Lifetime (Nom)	50000 h
Switching Cycle	50000X

Light Technical

Llmf At End Of Nominal Lifetime (Nom)	70 %
---------------------------------------	------

Mechanical and Housing

Bulb Shape	Tube, double-ended
------------	--------------------

Temperature

T-Ambient (Max)	45 °C
T-Ambient (Min)	-20 °C
T-Storage (Max)	65 °C
T-Storage (Min)	-40 °C

Approval and Application

Order Code	Full Product Name	Energy Consumption kWh/1000 h
467134	24T5HO/46-835/IF33/P/DIM 10/1	- kWh
467142	24T5HO/46-840/IF35/P/DIM 10/1	- kWh
467159	24T5HO/46-850/IF35/P/DIM 10/1	- kWh
476416	8T5HE/22-830/IF10/G/DIM 10/1	- kWh
476424	8T5HE/22-835/IF10/G/DIM 10/1	- kWh
476432	8T5HE/22-840/IF10/G/DIM 10/1	- kWh
476440	8T5HE/22-850/IF10/G/DIM 10/1	- kWh
476457	11T5HE/34-830/IF14/G/DIM 10/1	- kWh
476465	11T5HE/34-835/IF14/G/DIM 10/1	- kWh
476473	11T5HE/34-840/IF15/G/DIM 10/1	- kWh
476481	11T5HE/34-850/IF15/G/DIM 10/1	- kWh
476499	14T5HE/46-830/IF20/G/DIM 10/1	- kWh
476507	14T5HE/46-835/IF20/G/DIM 10/1	- kWh
476515	14T5HE/46-840/IF21/G/DIM 10/1	- kWh
476523	14T5HE/46-850/IF21/G/DIM 10/1	- kWh
542050	25T5HO/COR/46-835/MF33/G 25/1	- kWh
542068	25T5HO/COR/46-840/MF35/G 25/1	- kWh
542076	25T5HO/COR/46-850/MF35/G 25/1	- kWh
576140	8T5HE/COR/22-835/MF10/G 25/1	-
576157	8T5HE/COR/22-840/MF10/G 25/1	-
576165	8T5HE/COR/22-850/MF10/G 25/1	-
576173	10T5HE/COR/34-835/MF13/G 25/1	-
576181	10T5HE/COR/34-840/MF14/G 25/1	-
576199	10T5HE/COR/34-850/MF14/G 25/1	-
576207	14T5HE/COR/46-835/MF20/G 25/1	-
576215	14T5HE/COR/46-840/MF21/G 25/1	-
576223	14T5HE/COR/46-850/MF21/G 25/1	-

Controls and Dimming

Order Code	Full Product Name	Dimmable	Order Code	Full Product Name	Dimmable
467134	24T5HO/46-835/IF33/P/DIM 10/1	Yes	476523	14T5HE/46-850/IF21/G/DIM 10/1	Yes
467142	24T5HO/46-840/IF35/P/DIM 10/1	Yes	542050	25T5HO/COR/46-835/MF33/G 25/1	No
467159	24T5HO/46-850/IF35/P/DIM 10/1	Yes	542068	25T5HO/COR/46-840/MF35/G 25/1	No
476416	8T5HE/22-830/IF10/G/DIM 10/1	Yes	542076	25T5HO/COR/46-850/MF35/G 25/1	No
476424	8T5HE/22-835/IF10/G/DIM 10/1	Yes	576140	8T5HE/COR/22-835/MF10/G 25/1	Limited
476432	8T5HE/22-840/IF10/G/DIM 10/1	Yes	576157	8T5HE/COR/22-840/MF10/G 25/1	Limited
476440	8T5HE/22-850/IF10/G/DIM 10/1	Yes	576165	8T5HE/COR/22-850/MF10/G 25/1	Limited
476457	11T5HE/34-830/IF14/G/DIM 10/1	Yes	576173	10T5HE/COR/34-835/MF13/G 25/1	Limited
476465	11T5HE/34-835/IF14/G/DIM 10/1	Yes	576181	10T5HE/COR/34-840/MF14/G 25/1	Limited
476473	11T5HE/34-840/IF15/G/DIM 10/1	Yes	576199	10T5HE/COR/34-850/MF14/G 25/1	Limited
476481	11T5HE/34-850/IF15/G/DIM 10/1	Yes	576207	14T5HE/COR/46-835/MF20/G 25/1	Limited
476499	14T5HE/46-830/IF20/G/DIM 10/1	Yes	576215	14T5HE/COR/46-840/MF21/G 25/1	Limited
476507	14T5HE/46-835/IF20/G/DIM 10/1	Yes	576223	14T5HE/COR/46-850/MF21/G 25/1	Limited
476515	14T5HE/46-840/IF21/G/DIM 10/1	Yes			

Operating and Electrical

Order Code	Full Product Name	Input Frequency	Voltage (Nom)	Power (Rated) (Nom)	Starting Time (Nom)
467134	24T5HO/46-835/IF33/P/DIM 10/1	40000-80000 Hz	39-64 V	24 W	0.5 s
467142	24T5HO/46-840/IF35/P/DIM 10/1	40000-80000 Hz	39-64 V	24 W	0.5 s
467159	24T5HO/46-850/IF35/P/DIM 10/1	40000-80000 Hz	39-64 V	24 W	0.5 s
476416	8T5HE/22-830/IF10/G/DIM 10/1	40000-110000 Hz	40-60 V	8 W	0.5 s
476424	8T5HE/22-835/IF10/G/DIM 10/1	40000-110000 Hz	40-60 V	8 W	0.5 s
476432	8T5HE/22-840/IF10/G/DIM 10/1	40000-110000 Hz	40-60 V	8 W	0.5 s
476440	8T5HE/22-850/IF10/G/DIM 10/1	40000-110000 Hz	40-60 V	8 W	0.5 s
476457	11T5HE/34-830/IF14/G/DIM 10/1	40000-110000 Hz	50-80 V	11 W	0.5 s
476465	11T5HE/34-835/IF14/G/DIM 10/1	40000-110000 Hz	50-80 V	11 W	0.5 s
476473	11T5HE/34-840/IF15/G/DIM 10/1	40000-110000 Hz	50-80 V	11 W	0.5 s
476481	11T5HE/34-850/IF15/G/DIM 10/1	40000-110000 Hz	50-80 V	11 W	0.5 s
476499	14T5HE/46-830/IF20/G/DIM 10/1	40000-110000 Hz	70-105 V	14 W	0.5 s
476507	14T5HE/46-835/IF20/G/DIM 10/1	40000-110000 Hz	70-105 V	14 W	0.5 s
476515	14T5HE/46-840/IF21/G/DIM 10/1	40000-110000 Hz	70-105 V	14 W	0.5 s
476523	14T5HE/46-850/IF21/G/DIM 10/1	40000-110000 Hz	70-105 V	14 W	0.5 s
542050	25T5HO/COR/46-835/MF33/G 25/1	50 to 60 Hz	120-277 V	25 W	0.45 s

Order Code	Full Product Name	Input Frequency	Voltage (Nom)	Power (Rated) (Nom)	Starting Time (Nom)
542068	25T5HO/COR/46-840/MF35/G 25/1	50 to 60 Hz	120-277 V	25 W	0.45 s
542076	25T5HO/COR/46-850/MF35/G 25/1	50 to 60 Hz	120-277 V	25 W	0.45 s
576140	8T5HE/COR/22-835/MF10/G 25/1	50 to 60 Hz	120-277 V	8 W	0.5 s
576157	8T5HE/COR/22-840/MF10/G 25/1	50 to 60 Hz	120-277 V	8 W	0.5 s
576165	8T5HE/COR/22-850/MF10/G 25/1	50 to 60 Hz	120-277 V	8 W	0.5 s
576173	10T5HE/COR/34-835/MF13/G 25/1	50 to 60 Hz	120-277 V	10 W	0.5 s
576181	10T5HE/COR/34-840/MF14/G 25/1	50 to 60 Hz	120-277 V	10 W	0.5 s
576199	10T5HE/COR/34-850/MF14/G 25/1	50 to 60 Hz	120-277 V	10 W	0.5 s
576207	14T5HE/COR/46-835/MF20/G 25/1	50 to 60 Hz	120-277 V	14 W	0.5 s
576215	14T5HE/COR/46-840/MF21/G 25/1	50 to 60 Hz	120-277 V	14 W	0.5 s
576223	14T5HE/COR/46-850/MF21/G 25/1	50 to 60 Hz	120-277 V	14 W	0.5 s

Light Technical (1/2)

Order Code	Full Product Name	Beam Angle (Nom)	Color Code	Correlated Color Temperature (Nom)	Color Rendering Index (Nom)
467134	24T5HO/46-835/IF33/P/DIM 10/1	140 °	835	3500 K	82
467142	24T5HO/46-840/IF35/P/DIM 10/1	140 °	841	4000 K	82
467159	24T5HO/46-850/IF35/P/DIM 10/1	140 °	850	5000 K	82
476416	8T5HE/22-830/IF10/G/DIM 10/1	200 °	830	3000 K	82
476424	8T5HE/22-835/IF10/G/DIM 10/1	200 °	835	3500 K	82

Order Code	Full Product Name	Beam Angle (Nom)	Color Code	Correlated Color Temperature (Nom)	Color Rendering Index (Nom)
476432	8T5HE/22-840/IF10/G/DIM 10/1	200 °	841	4000 K	82
476440	8T5HE/22-850/IF10/G/DIM 10/1	200 °	850	5000 K	82
476457	11T5HE/34-830/IF14/G/DIM 10/1	200 °	830	3000 K	82
476465	11T5HE/34-835/IF14/G/DIM 10/1	200 °	835	3500 K	82
476473	11T5HE/34-840/IF15/G/DIM 10/1	200 °	841	4000 K	82

Order Code	Full Product Name	Beam		Correlated Color	Color
		Angle (Nom)	Color Code	Temperature (Nom)	Rendering Index (Nom)
476481	11T5HE/34-850/IF15/G/DIM 10/1	200 °	850	5000 K	82
476499	14T5HE/46-830/IF20/G/DIM 10/1	200 °	830	3000 K	82
476507	14T5HE/46-835/IF20/G/DIM 10/1	200 °	835	3500 K	82
476515	14T5HE/46-840/IF21/G/DIM 10/1	200 °	841	4000 K	82
476523	14T5HE/46-850/IF21/G/DIM 10/1	200 °	850	5000 K	82
542050	25T5HO/COR/46-835/MF33/G 25/1	200 °	835	3500 K	80
542068	25T5HO/COR/46-840/MF35/G 25/1	200 °	841	4000 K	80
542076	25T5HO/COR/46-850/MF35/G 25/1	200 °	850	5000 K	80
576140	8T5HE/COR/22-835/MF10/G 25/1	200 °	835	3500 K	80

Order Code	Full Product Name	Beam		Correlated Color	Color
		Angle (Nom)	Color Code	Temperature (Nom)	Rendering Index (Nom)
576157	8T5HE/COR/22-840/MF10/G 25/1	200 °	841	4000 K	80
576165	8T5HE/COR/22-850/MF10/G 25/1	200 °	850	5000 K	80
576173	10T5HE/COR/34-835/MF13/G 25/1	200 °	835	3500 K	80
576181	10T5HE/COR/34-840/MF14/G 25/1	200 °	841	4000 K	80
576199	10T5HE/COR/34-850/MF14/G 25/1	200 °	850	5000 K	80
576207	14T5HE/COR/46-835/MF20/G 25/1	200 °	835	3500 K	80
576215	14T5HE/COR/46-840/MF21/G 25/1	200 °	841	4000 K	80
576223	14T5HE/COR/46-850/MF21/G 25/1	200 °	850	5000 K	80

Light Technical (2/2)

Order Code	Full Product Name	Luminous Flux (Nom)
467134	24T5HO/46-835/IF33/P/DIM 10/1	3300 lm
467142	24T5HO/46-840/IF35/P/DIM 10/1	3500 lm
467159	24T5HO/46-850/IF35/P/DIM 10/1	3500 lm
476416	8T5HE/22-830/IF10/G/DIM 10/1	1000 lm
476424	8T5HE/22-835/IF10/G/DIM 10/1	1000 lm
476432	8T5HE/22-840/IF10/G/DIM 10/1	1050 lm
476440	8T5HE/22-850/IF10/G/DIM 10/1	1050 lm
476457	11T5HE/34-830/IF14/G/DIM 10/1	1400 lm
476465	11T5HE/34-835/IF14/G/DIM 10/1	1400 lm
476473	11T5HE/34-840/IF15/G/DIM 10/1	1500 lm
476481	11T5HE/34-850/IF15/G/DIM 10/1	1500 lm
476499	14T5HE/46-830/IF20/G/DIM 10/1	2000 lm
476507	14T5HE/46-835/IF20/G/DIM 10/1	2000 lm
476515	14T5HE/46-840/IF21/G/DIM 10/1	2100 lm

Order Code	Full Product Name	Luminous Flux (Nom)
476523	14T5HE/46-850/IF21/G/DIM 10/1	2100 lm
542050	25T5HO/COR/46-835/MF33/G 25/1	3300 lm
542068	25T5HO/COR/46-840/MF35/G 25/1	3500 lm
542076	25T5HO/COR/46-850/MF35/G 25/1	3500 lm
576140	8T5HE/COR/22-835/MF10/G 25/1	1000 lm
576157	8T5HE/COR/22-840/MF10/G 25/1	1050 lm
576165	8T5HE/COR/22-850/MF10/G 25/1	1050 lm
576173	10T5HE/COR/34-835/MF13/G 25/1	1300 lm
576181	10T5HE/COR/34-840/MF14/G 25/1	1400 lm
576199	10T5HE/COR/34-850/MF14/G 25/1	1400 lm
576207	14T5HE/COR/46-835/MF20/G 25/1	2000 lm
576215	14T5HE/COR/46-840/MF21/G 25/1	2100 lm
576223	14T5HE/COR/46-850/MF21/G 25/1	2100 lm

Mechanical and Housing

Order Code	Full Product Name	Bulb Finish
467134	24T5HO/46-835/IF33/P/DIM 10/1	-
467142	24T5HO/46-840/IF35/P/DIM 10/1	-
467159	24T5HO/46-850/IF35/P/DIM 10/1	-
476416	8T5HE/22-830/IF10/G/DIM 10/1	-
476424	8T5HE/22-835/IF10/G/DIM 10/1	-
476432	8T5HE/22-840/IF10/G/DIM 10/1	-
476440	8T5HE/22-850/IF10/G/DIM 10/1	-
476457	11T5HE/34-830/IF14/G/DIM 10/1	-
476465	11T5HE/34-835/IF14/G/DIM 10/1	-

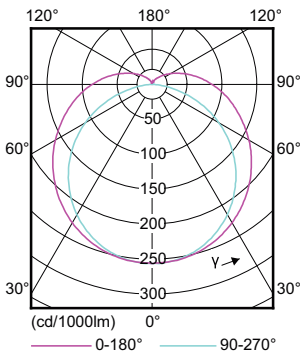
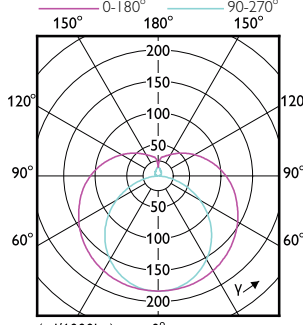
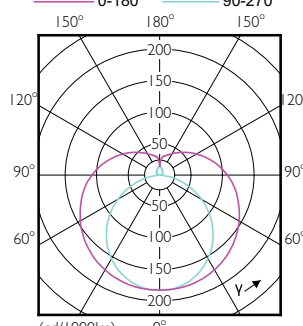
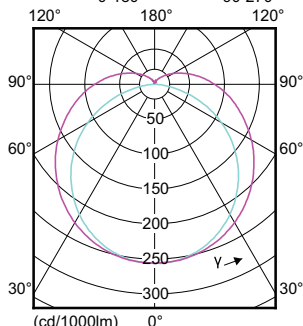
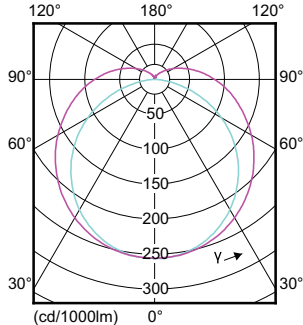
Order Code	Full Product Name	Bulb Finish
476473	11T5HE/34-840/IF15/G/DIM 10/1	-
476481	11T5HE/34-850/IF15/G/DIM 10/1	-
476499	14T5HE/46-830/IF20/G/DIM 10/1	-
476507	14T5HE/46-835/IF20/G/DIM 10/1	-
476515	14T5HE/46-840/IF21/G/DIM 10/1	-
476523	14T5HE/46-850/IF21/G/DIM 10/1	-
542050	25T5HO/COR/46-835/MF33/G 25/1	-
542068	25T5HO/COR/46-840/MF35/G 25/1	-
542076	25T5HO/COR/46-850/MF35/G 25/1	-

Order Code	Full Product Name	Bulb Finish
576140	8T5HE/COR/22-835/MF10/G 25/1	Frosted
576157	8T5HE/COR/22-840/MF10/G 25/1	Frosted
576165	8T5HE/COR/22-850/MF10/G 25/1	Frosted
576173	10T5HE/COR/34-835/MF13/G 25/1	Frosted
576181	10T5HE/COR/34-840/MF14/G 25/1	Frosted

Order Code	Full Product Name	Bulb Finish
576199	10T5HE/COR/34-850/MF14/G 25/1	Frosted
576207	14T5HE/COR/46-835/MF20/G 25/1	Frosted
576215	14T5HE/COR/46-840/MF21/G 25/1	Frosted
576223	14T5HE/COR/46-850/MF21/G 25/1	Frosted

Temperature

Order Code	Full Product Name	T-Case Maximum (Nom)
467134	24T5HO/46-835/IF33/P/DIM 10/1	45 °C
467142	24T5HO/46-840/IF35/P/DIM 10/1	45 °C
467159	24T5HO/46-850/IF35/P/DIM 10/1	45 °C
476416	8T5HE/22-830/IF10/G/DIM 10/1	70 °C
476424	8T5HE/22-835/IF10/G/DIM 10/1	70 °C
476432	8T5HE/22-840/IF10/G/DIM 10/1	70 °C
476440	8T5HE/22-850/IF10/G/DIM 10/1	70 °C
476457	11T5HE/34-830/IF14/G/DIM 10/1	70 °C
476465	11T5HE/34-835/IF14/G/DIM 10/1	70 °C
476473	11T5HE/34-840/IF15/G/DIM 10/1	70 °C
476481	11T5HE/34-850/IF15/G/DIM 10/1	70 °C
476499	14T5HE/46-830/IF20/G/DIM 10/1	70 °C
476507	14T5HE/46-835/IF20/G/DIM 10/1	70 °C
476515	14T5HE/46-840/IF21/G/DIM 10/1	70 °C
476523	14T5HE/46-850/IF21/G/DIM 10/1	70 °C
542050	25T5HO/COR/46-835/MF33/G 25/1	75 °C
542068	25T5HO/COR/46-840/MF35/G 25/1	75 °C
542076	25T5HO/COR/46-850/MF35/G 25/1	75 °C
576140	8T5HE/COR/22-835/MF10/G 25/1	70 °C
576157	8T5HE/COR/22-840/MF10/G 25/1	70 °C
576165	8T5HE/COR/22-850/MF10/G 25/1	70 °C
576173	10T5HE/COR/34-835/MF13/G 25/1	70 °C
576181	10T5HE/COR/34-840/MF14/G 25/1	70 °C
576199	10T5HE/COR/34-850/MF14/G 25/1	70 °C
576207	14T5HE/COR/46-835/MF20/G 25/1	70 °C
576215	14T5HE/COR/46-840/MF21/G 25/1	70 °C
576223	14T5HE/COR/46-850/MF21/G 25/1	70 °C



T5

